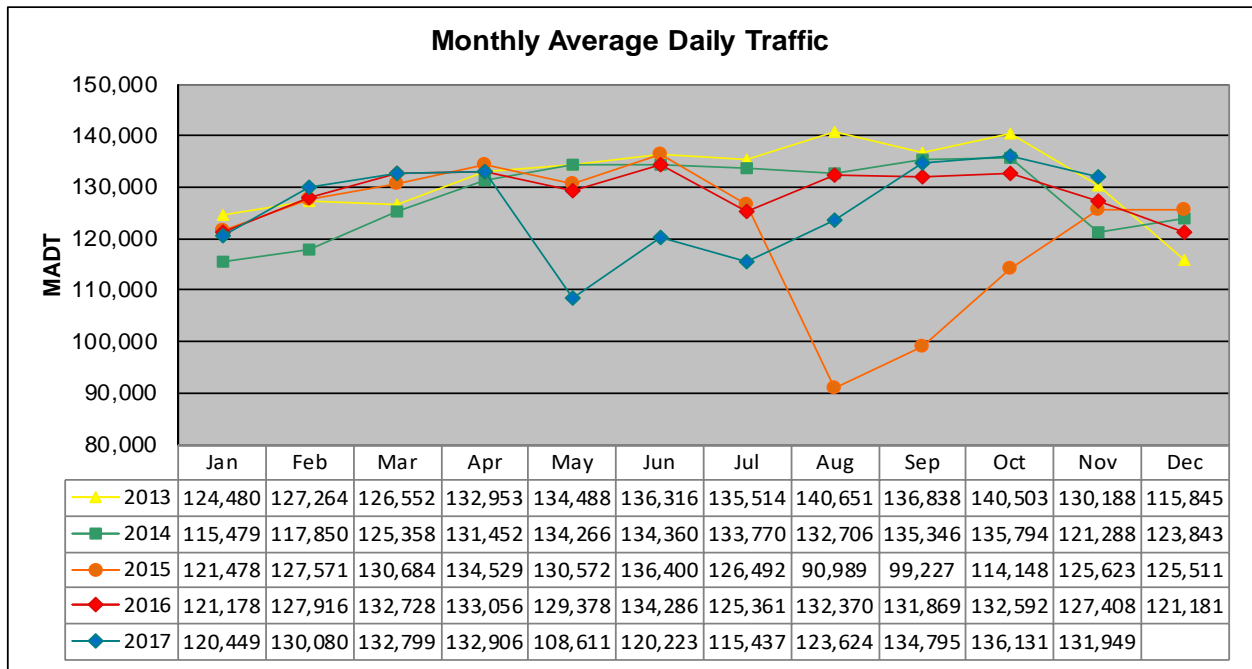


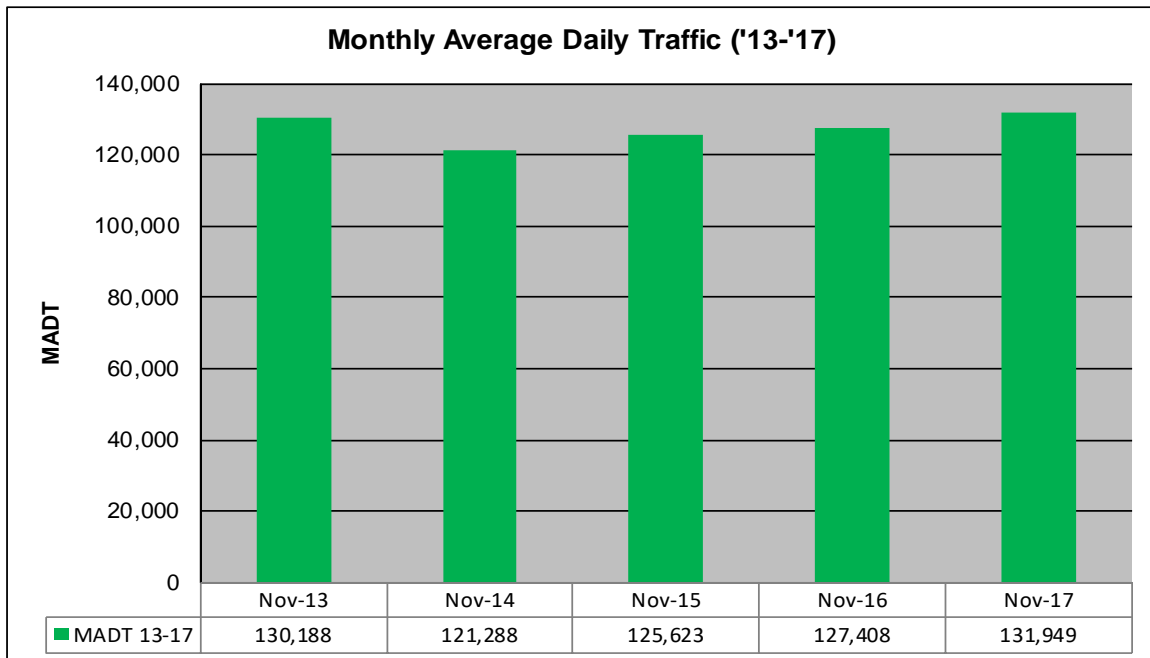
MONTHLY REPORT, STATION NO. 326 (ATR)

NOVEMBER 2017

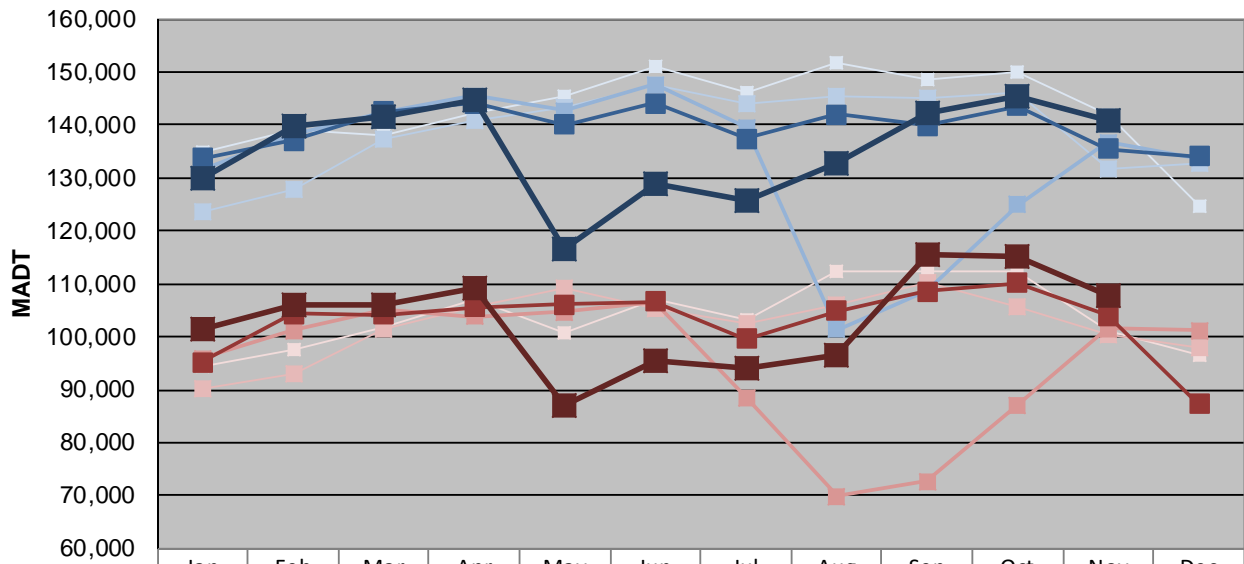
Station Measurement: VOLUME		
Route: I-394	Route Direction: E/W	Lanes: 6
County: Hennepin		Closest City: Minneapolis
Functional Class: Urban Principal Arterial - Interstate		
Location: E OF TH100 IN MINNEAPOLIS		
Ref Post: 007+00.250	True Mile: 7.25	Sequence No. 9850
Volume: 3,958,455		MADT: 131,949
Weekday (M-F) MADT: 140,740		Weekend (Sa-Su) MADT: 107,614



Note: Decrease in traffic July to October 2015 and May to August 2017 due to construction on I-394



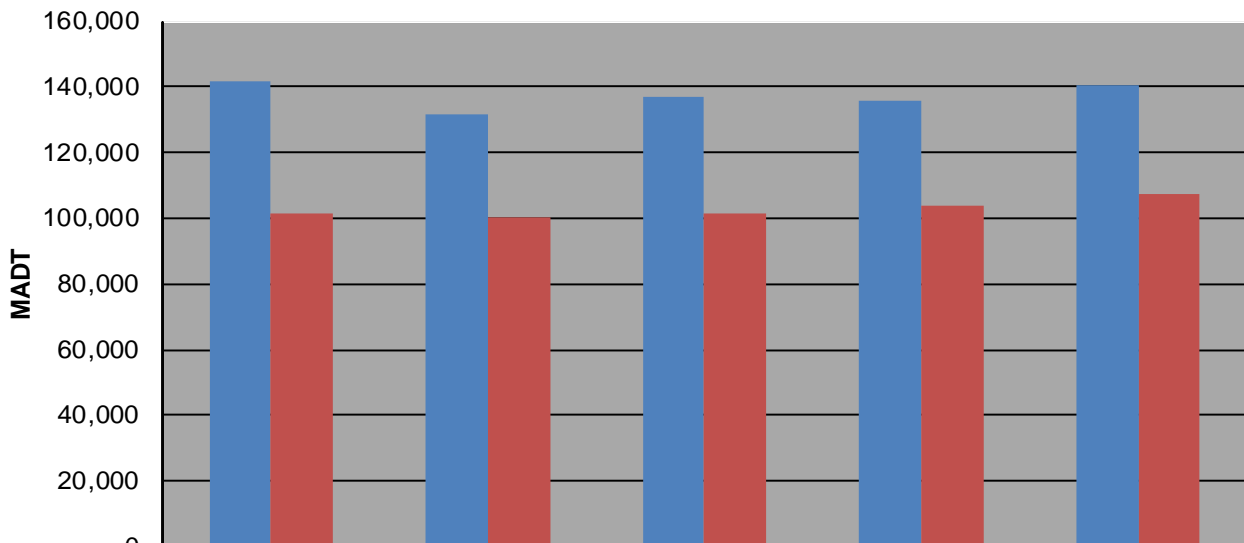
Weekday (WD)/Weekend (WE) Monthly Average Daily Traffic



	Jan	Feb	Mar	Apr	May	Jun	Jul	Aug	Sep	Oct	Nov	Dec
'13 WD	134,976	139,158	137,954	142,296	145,442	150,984	146,278	151,644	148,730	150,116	141,942	124,616
'13 WE	94,342	97,532	101,784	107,138	100,908	106,980	103,032	112,510	112,348	112,480	101,206	96,348
'14 WD	123,722	127,822	137,244	140,684	143,392	147,456	143,966	145,546	145,064	146,016	131,682	132,652
'14 WE	90,302	92,922	101,338	105,692	109,168	105,392	102,412	106,158	110,372	105,688	100,502	98,046
'15 WD	131,562	138,130	142,330	145,488	142,650	147,580	139,514	101,276	108,568	124,858	136,732	133,684
'15 WE	95,840	101,174	105,220	103,872	104,634	106,674	88,554	69,904	72,690	87,142	101,610	101,238
'16 WD	133,748	137,102	142,512	144,022	140,022	144,060	137,350	142,004	139,832	143,610	135,492	134,028
'16 WE	95,198	104,364	104,246	105,662	106,034	106,692	99,612	104,888	108,636	110,152	103,982	87,222
'17 WD	129,784	139,730	141,664	144,848	116,686	128,990	125,848	132,630	142,186	145,314	140,740	
'17 WE	101,340	105,952	106,132	109,024	86,920	95,416	94,158	96,664	115,430	115,162	107,614	

Note: 'Weekday' defined as Monday-Friday, 'Weekend' defined as Saturday-Sunday

Weekday/Weekend Monthly Average Daily Traffic ('13-'17)



	Nov-13	Nov-14	Nov-15	Nov-16	Nov-17
Weekday	141,942	131,682	136,732	135,492	140,740
Weekend	101,206	100,502	101,610	103,982	107,614