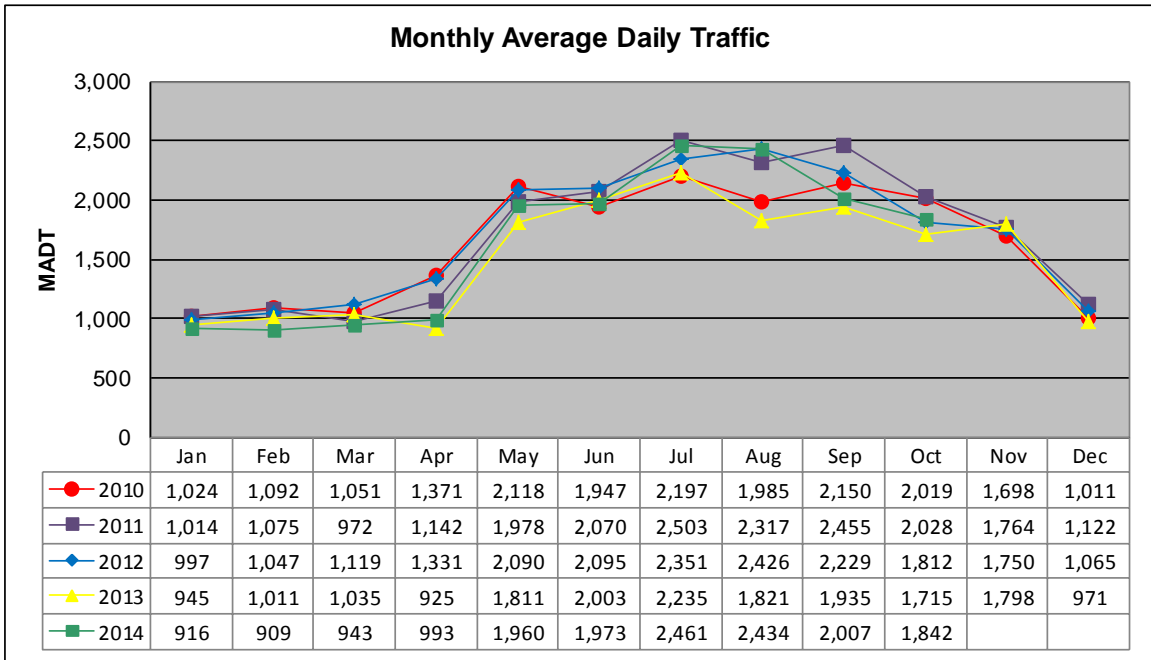


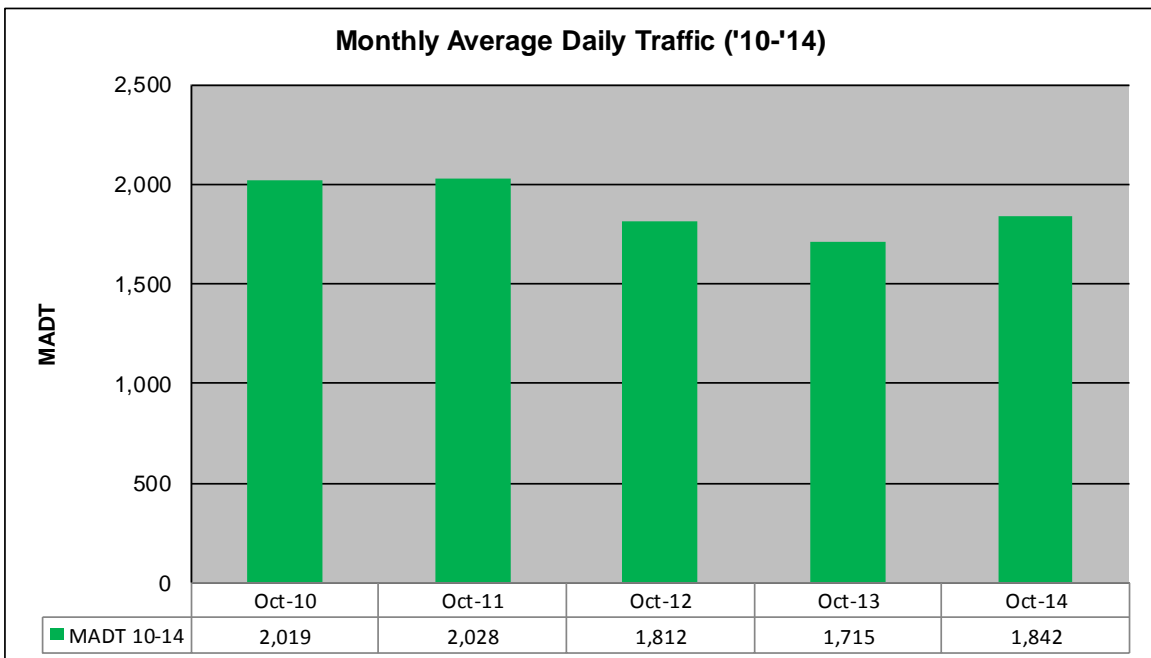
# MONTHLY REPORT, STATION NO. 222 (ATR)

## OCTOBER 2014

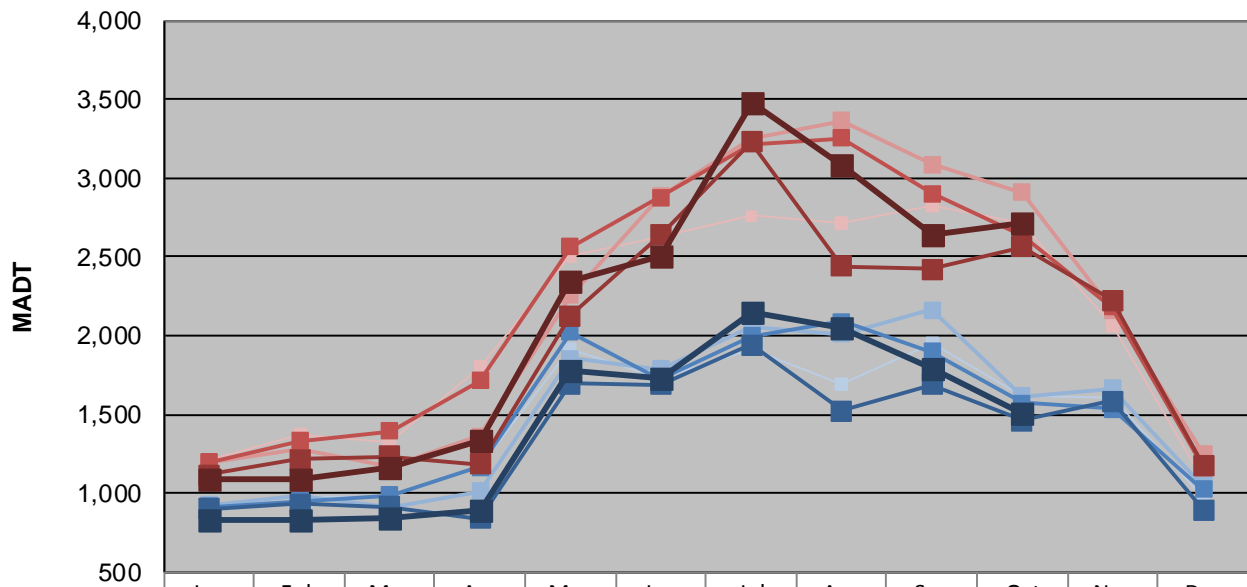
|  |                       |                                    |
|--|-----------------------|------------------------------------|
| Station Measurement: VOLUME/SPEED        |                       |                                    |
| Route: TH 65                             | Route Direction: N/S  | Lanes: 2                           |
| County: Aitkin                           | Closest City: McGrath |                                    |
| Functional Class: Rural Minor Arterial   |                       |                                    |
| Location: .6 MI N OF CSAH2, N OF MCGRATH |                       |                                    |
| Ref Post: 097+00.725                     | True Mile: 100.432    | Sequence No. 6767                  |
| <b>Volume: 57,093</b>                    |                       | <b>MADT: 1,842</b>                 |
| <b>Weekday (M-F) MADT: 1,504</b>         |                       | <b>Weekend (Sa-Su) MADT: 2,712</b> |



Note: Decrease in traffic August 2013 due to construction on TH 65



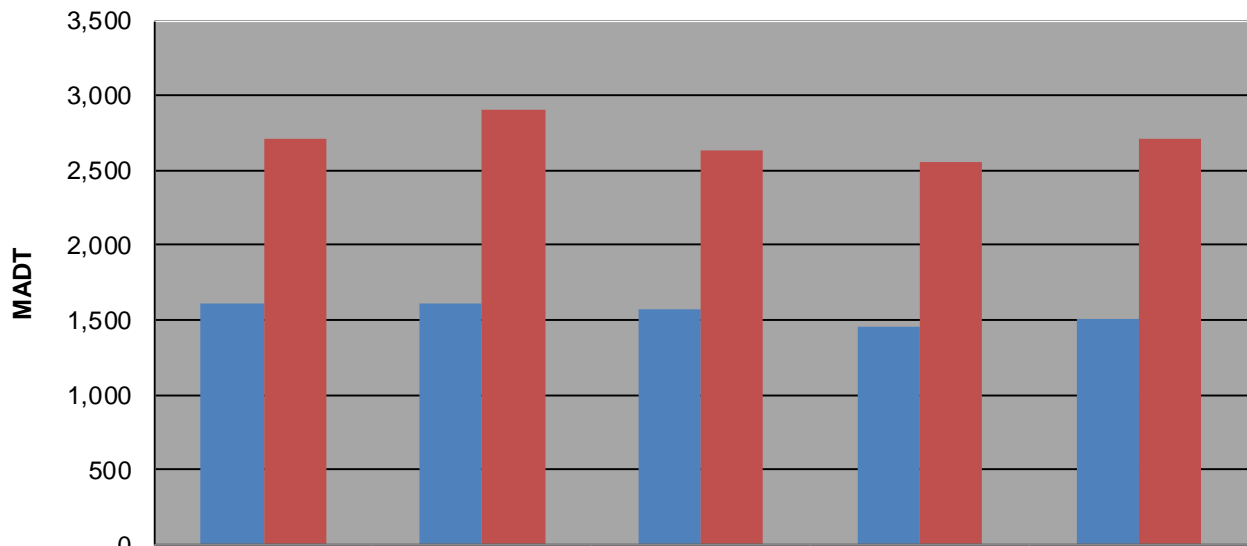
**Weekday (WD)/Weekend (WE) Monthly Average Daily Traffic**



|        | Jan   | Feb   | Mar   | Apr   | May   | Jun   | Jul   | Aug   | Sep   | Oct   | Nov   | Dec   |
|--------|-------|-------|-------|-------|-------|-------|-------|-------|-------|-------|-------|-------|
| '10 WD | 914   | 980   | 982   | 1,180 | 1,918 | 1,732 | 1,916 | 1,686 | 1,948 | 1,616 | 1,602 | 968   |
| '10 WE | 1,208 | 1,374 | 1,318 | 1,802 | 2,506 | 2,632 | 2,760 | 2,718 | 2,826 | 2,708 | 2,058 | 1,076 |
| '11 WD | 924   | 984   | 908   | 1,012 | 1,856 | 1,786 | 2,054 | 2,012 | 2,162 | 1,614 | 1,664 | 1,048 |
| '11 WE | 1,192 | 1,278 | 1,174 | 1,362 | 2,256 | 2,882 | 3,248 | 3,366 | 3,086 | 2,906 | 2,166 | 1,250 |
| '12 WD | 916   | 952   | 990   | 1,164 | 2,020 | 1,722 | 1,996 | 2,088 | 1,896 | 1,574 | 1,538 | 1,022 |
| '12 WE | 1,196 | 1,334 | 1,396 | 1,716 | 2,564 | 2,876 | 3,216 | 3,254 | 2,900 | 2,634 | 2,184 | 1,166 |
| '13 WD | 900   | 930   | 912   | 840   | 1,696 | 1,686 | 1,940 | 1,520 | 1,686 | 1,460 | 1,584 | 894   |
| '13 WE | 1,116 | 1,214 | 1,234 | 1,182 | 2,124 | 2,636 | 3,230 | 2,442 | 2,424 | 2,562 | 2,222 | 1,178 |
| '14 WD | 836   | 836   | 844   | 886   | 1,778 | 1,732 | 2,142 | 2,044 | 1,788 | 1,504 |       |       |
| '14 WE | 1,092 | 1,090 | 1,162 | 1,336 | 2,346 | 2,510 | 3,474 | 3,086 | 2,640 | 2,712 |       |       |

Note: 'Weekday' defined as Monday-Friday, 'Weekend' defined as Saturday-Sunday

**Weekday/Weekend Monthly Average Daily Traffic ('10-'14)**



|         | Oct-10 | Oct-11 | Oct-12 | Oct-13 | Oct-14 |
|---------|--------|--------|--------|--------|--------|
| Weekday | 1,616  | 1,614  | 1,574  | 1,460  | 1,504  |
| Weekend | 2,708  | 2,906  | 2,634  | 2,562  | 2,712  |