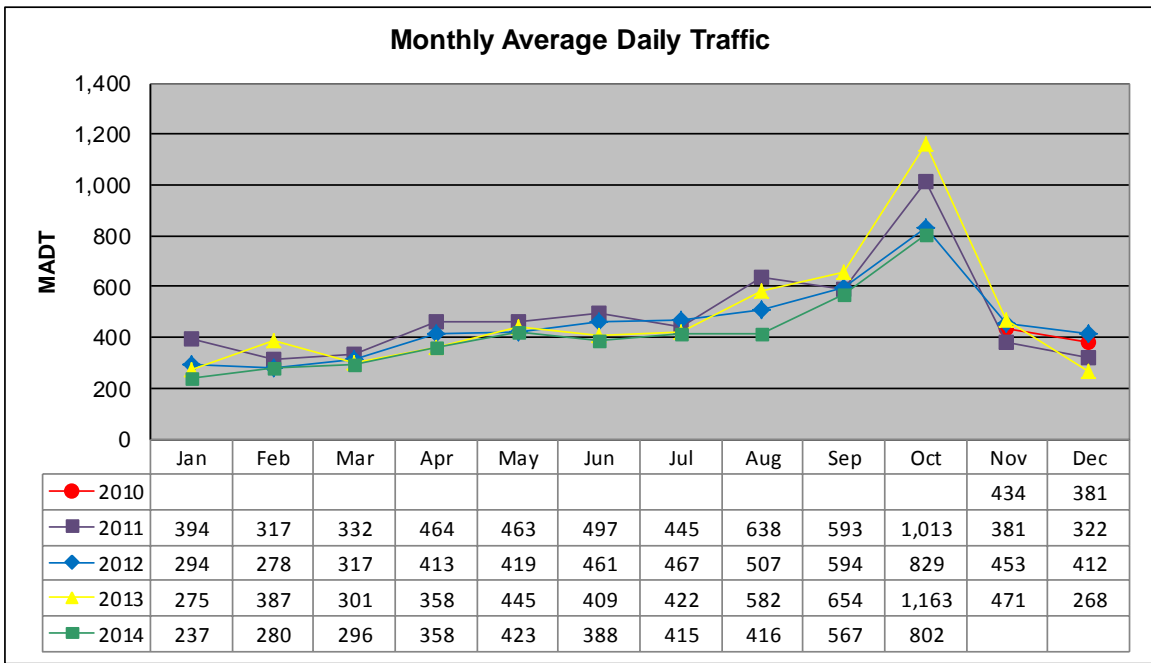


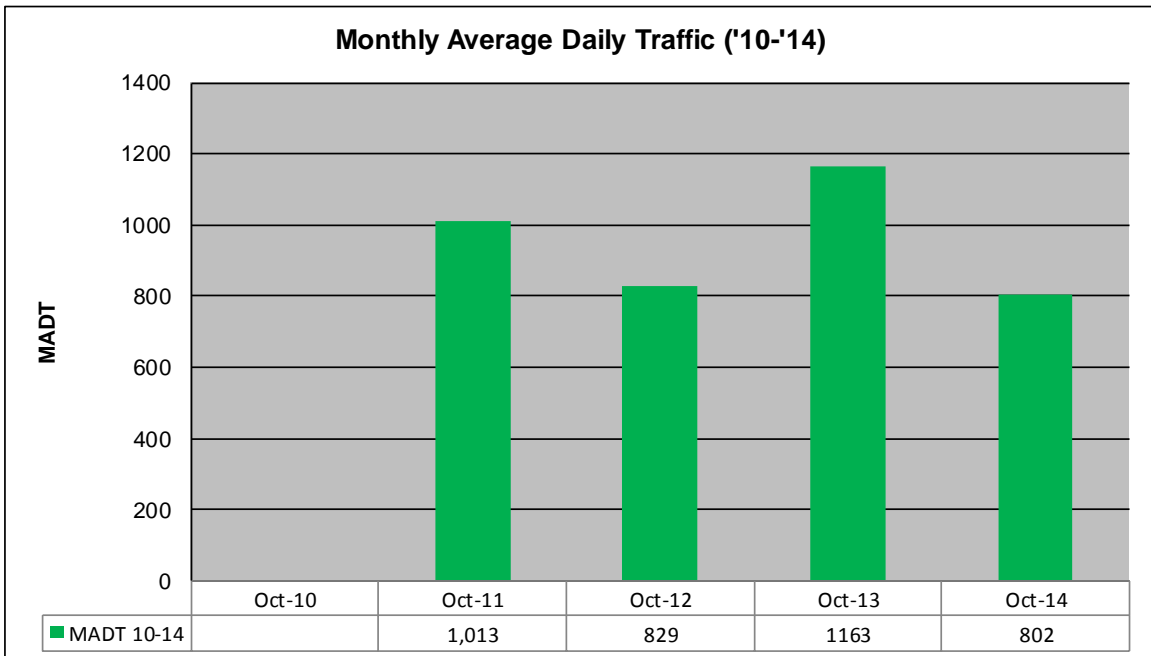
MONTHLY REPORT, STATION NO. 41 (WIM)

OCTOBER 2014

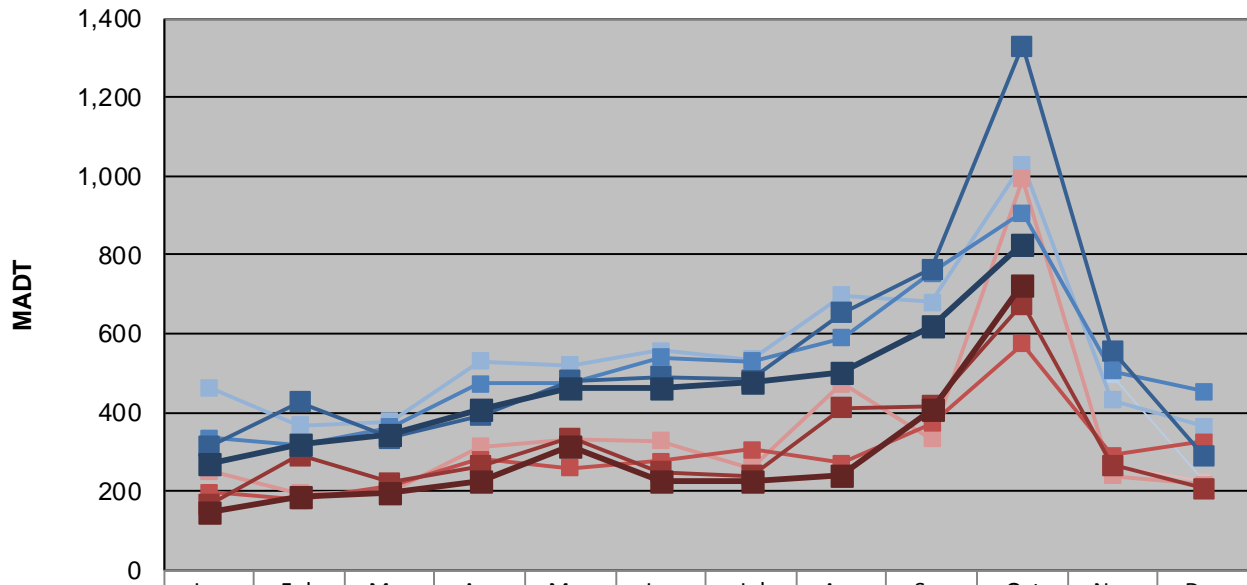
Station Measurement: VOLUME/SPEED/CLASS/WEIGHT		
Route: CSAH 14	Route Direction: N/S	Lanes: 2
County: Polk	Closest City: Crookston	
Functional Class: Rural Major Collector		
Location: 1.3 MI N OF CSAH45, S OF CROOKSTON		
Ref Post: 014+00.850	True Mile: 14.85	Sequence No. 9817
Volume: 24,858		MADT: 802
Weekday (M-F) MADT: 828		Weekend (Sa-Su) MADT: 722



Note: Volume data reported as ATR 53 for November/December 2010... Increase in traffic during Octobers due to beet harvesting



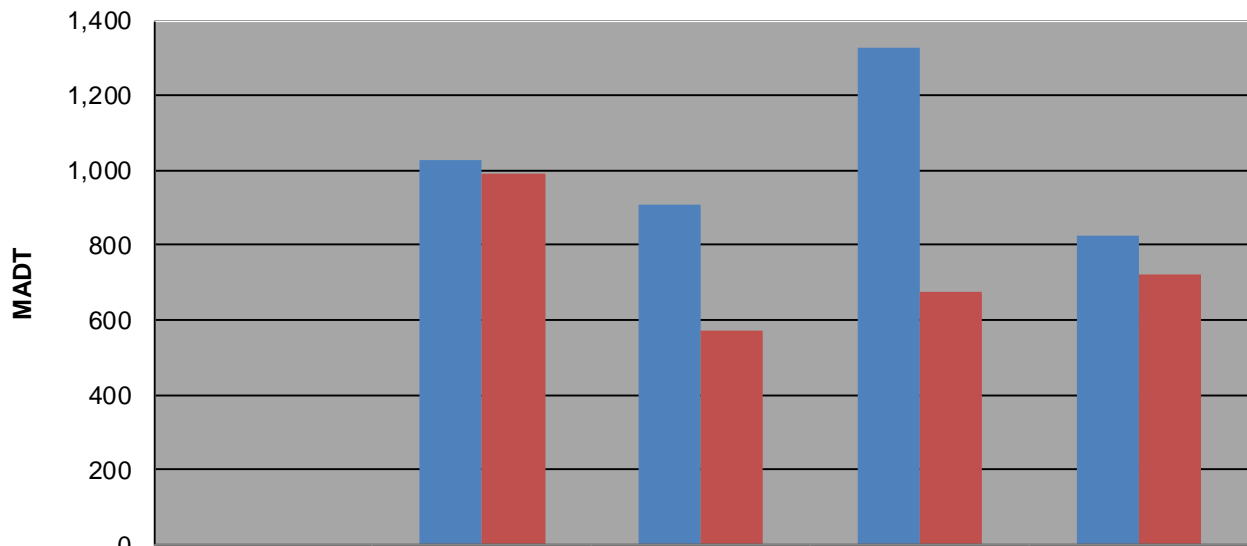
Weekday (WD)/Weekend (WE) Monthly Average Daily Traffic



	Jan	Feb	Mar	Apr	May	Jun	Jul	Aug	Sep	Oct	Nov	Dec
'10 WD											494	228
'10 WE											266	224
'11 WD	464	366	378	530	520	558	534	698	680	1,030	432	364
'11 WE	252	196	200	312	332	328	260	474	332	992	240	216
'12 WD	334	316	362	474	472	540	530	588	754	906	506	454
'12 WE	198	178	212	280	260	276	306	270	372	574	292	326
'13 WD	312	426	336	392	480	490	482	652	764	1,330	558	292
'13 WE	166	290	222	264	334	250	238	412	416	674	266	208
'14 WD	270	320	346	408	464	460	478	502	622	828		
'14 WE	148	184	196	224	314	224	228	238	408	722		

Note: 'Weekday' defined as Monday-Friday, 'Weekend' defined as Saturday-Sunday

Weekday/Weekend Monthly Average Daily Traffic ('10-'14)



	Oct-10	Oct-11	Oct-12	Oct-13	Oct-14
Weekday		1,030	906	1,330	828
Weekend		992	574	674	722