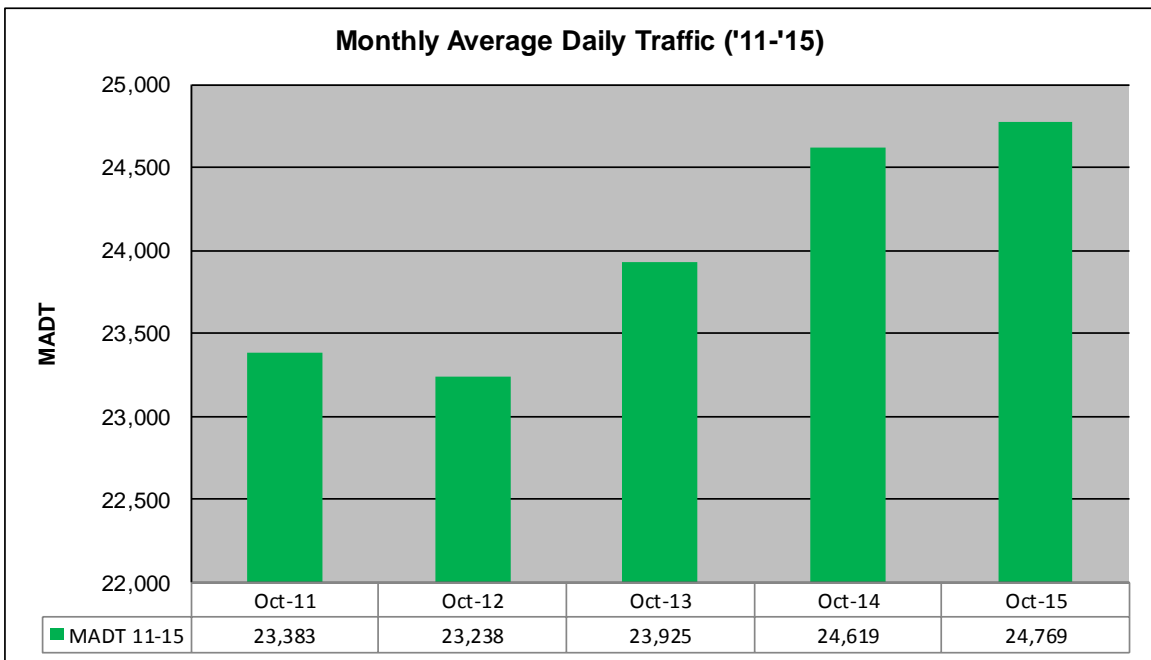
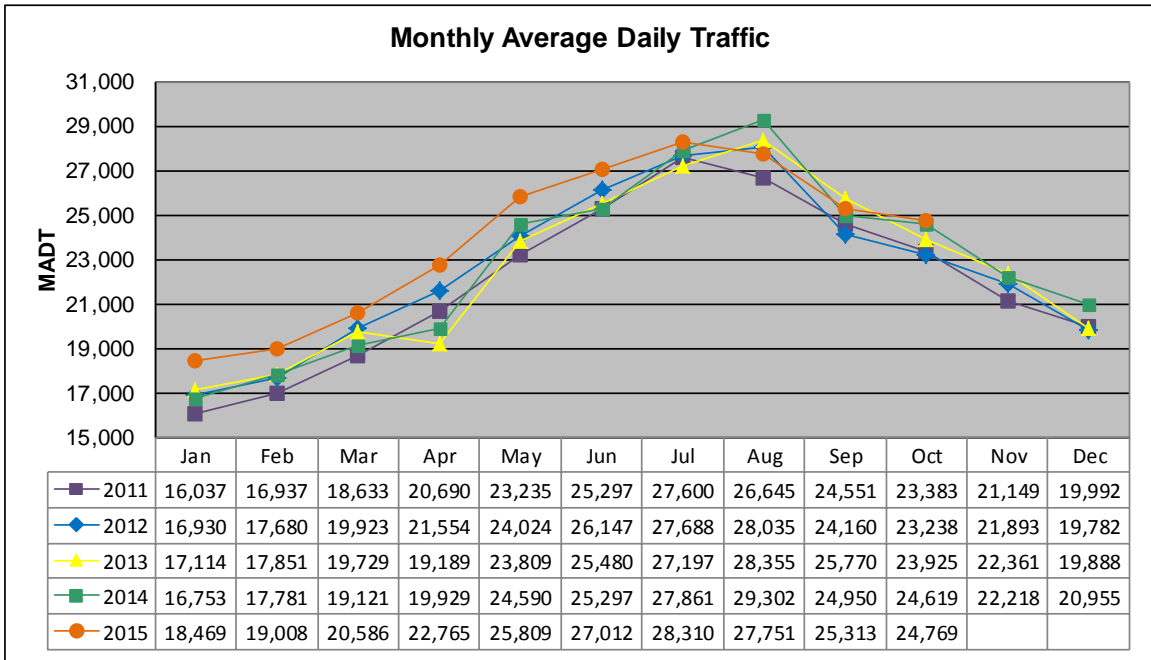


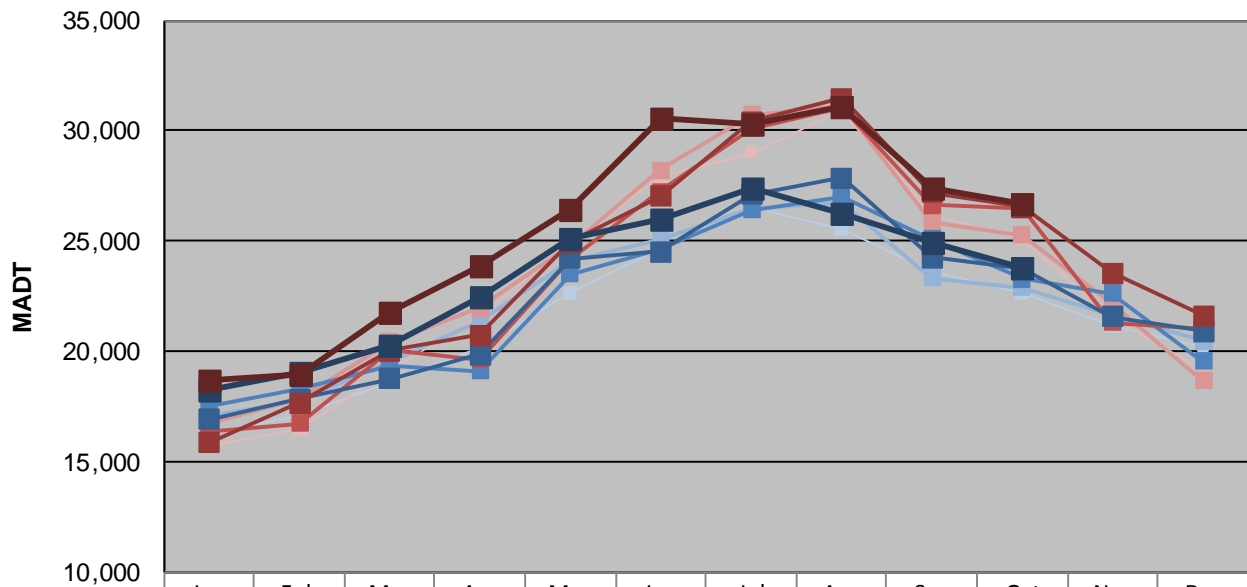
# MONTHLY REPORT, STATION NO. 175 (ATR)

## OCTOBER 2015

Station Measurement: VOLUME/SPEED/CLASS		
Route: I-94	Route Direction: E/W	Lanes: 4
County: Stearns		Closest City: Sauk Centre
Functional Class: Rural Principal Arterial - Interstate		
Location: E OF CR186, SE OF SAUK CENTRE		
Ref Post: 128+00.640	True Mile: 129	Sequence No. 6776
<b>Volume: 767,840</b>		<b>MADT: 24,769</b>
<b>Weekday (M-F) MADT: 23,778</b>		<b>Weekend (Sa-Su) MADT: 26,656</b>



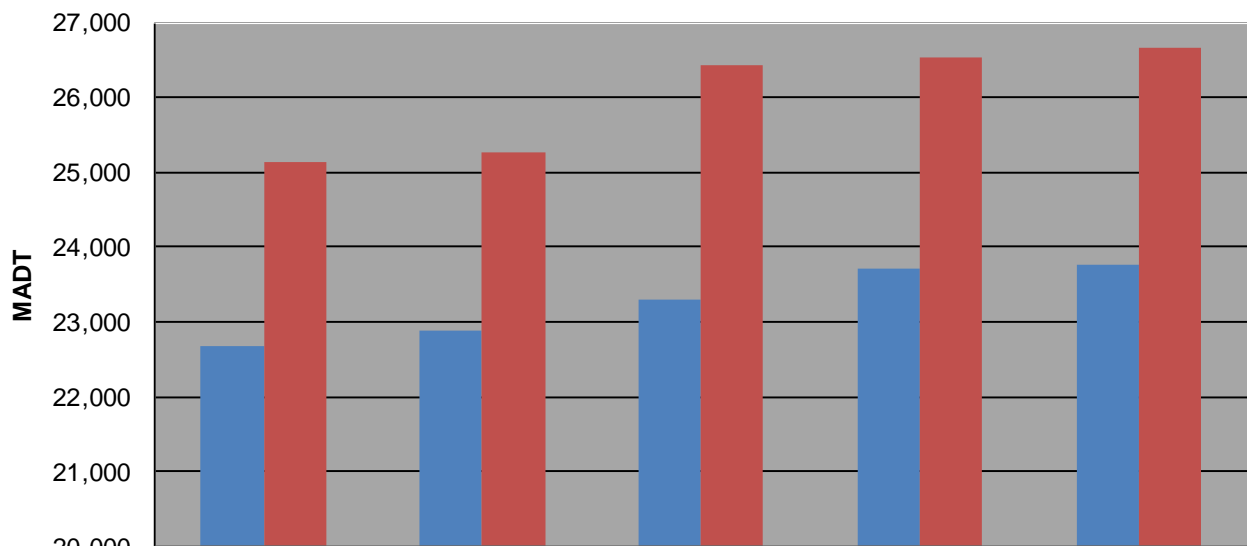
### Weekday (WD)/Weekend (WE) Monthly Average Daily Traffic



	Jan	Feb	Mar	Apr	May	Jun	Jul	Aug	Sep	Oct	Nov	Dec
'11 WD	16,268	17,098	18,604	20,144	22,674	24,682	26,496	25,512	23,592	22,670	21,126	20,210
'11 WE	15,682	16,506	19,172	21,600	24,946	27,886	29,012	30,902	26,176	25,134	21,466	19,162
'12 WD	17,052	17,750	19,542	21,332	24,098	25,038	26,492	26,704	23,316	22,876	21,600	20,452
'12 WE	16,686	17,850	20,448	21,946	24,838	28,190	30,716	31,094	25,850	25,272	22,150	18,670
'13 WD	17,496	18,296	19,320	19,130	23,508	24,602	26,410	26,994	25,098	23,294	22,612	19,564
'13 WE	16,358	16,740	20,080	19,656	24,222	27,238	30,084	31,086	26,628	26,432	21,318	21,014
'14 WD	16,916	17,828	18,768	19,840	24,224	24,522	27,100	27,860	24,264	23,718	21,560	20,904
'14 WE	15,870	17,664	20,030	20,732	24,936	27,016	30,400	31,446	27,208	26,536	23,532	21,608
'15 WD	18,252	19,018	20,290	22,430	25,144	25,952	27,380	26,262	24,926	23,778		
'15 WE	18,682	18,984	21,726	23,900	26,392	30,604	30,262	31,070	27,370	26,656		

Note: 'Weekday' defined as Monday-Friday, 'Weekend' defined as Saturday-Sunday

### Weekday/Weekend Monthly Average Daily Traffic ('11-'15)



	Oct-11	Oct-12	Oct-13	Oct-14	Oct-15
Weekday	22,670	22,876	23,294	23,718	23,778
Weekend	25,134	25,272	26,432	26,536	26,656