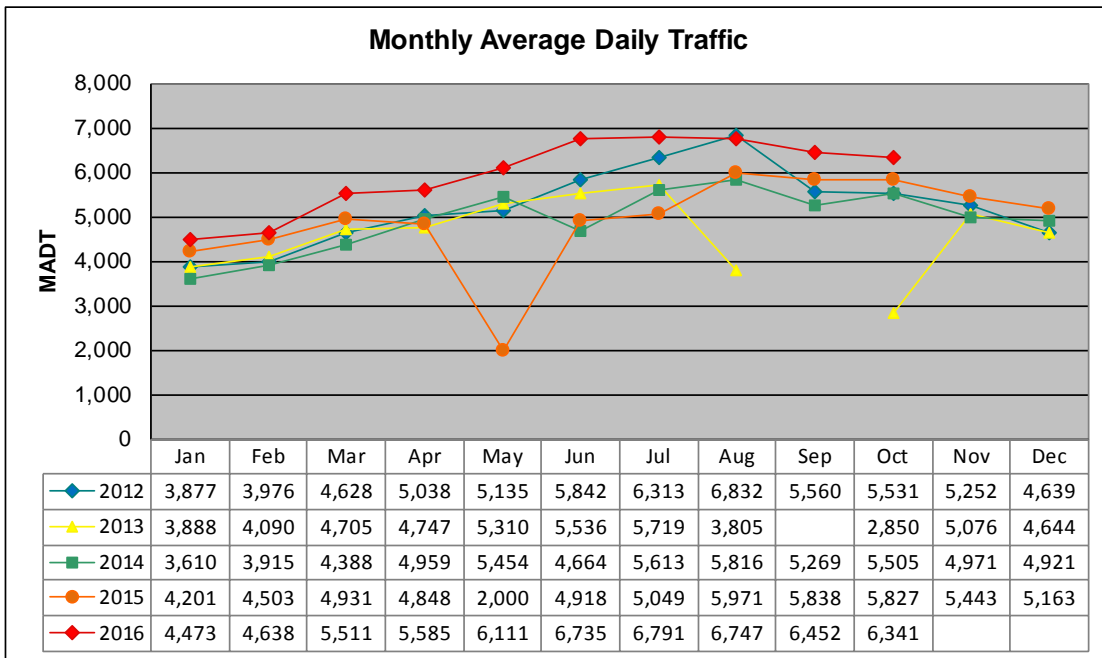
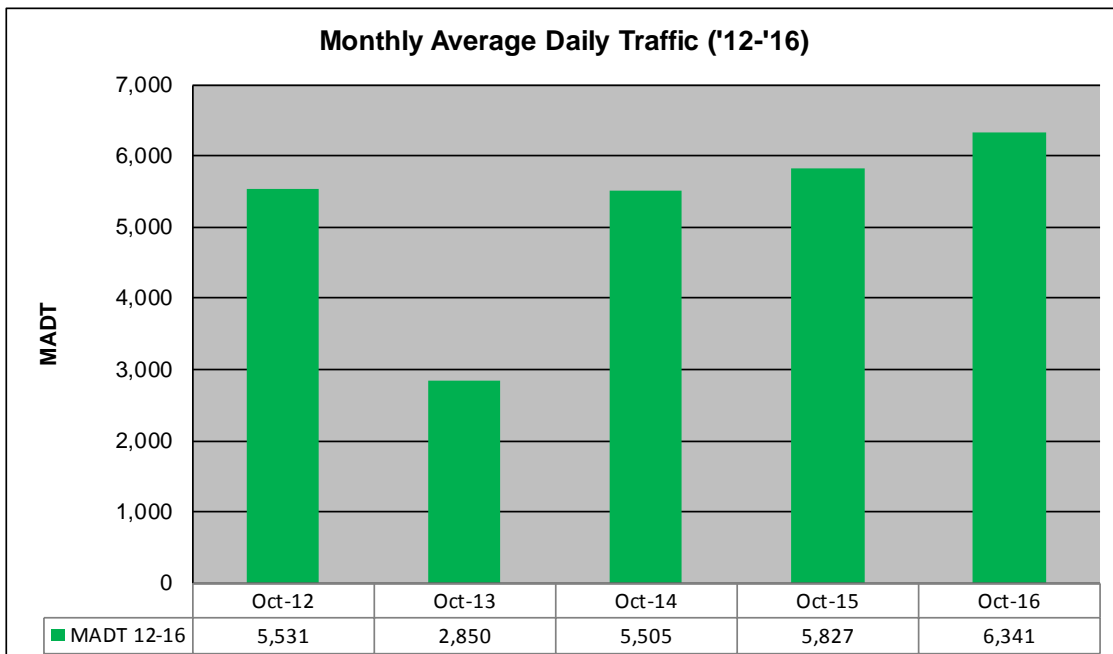


MONTHLY REPORT, STATION NO. 27 (WIM) OCTOBER 2016

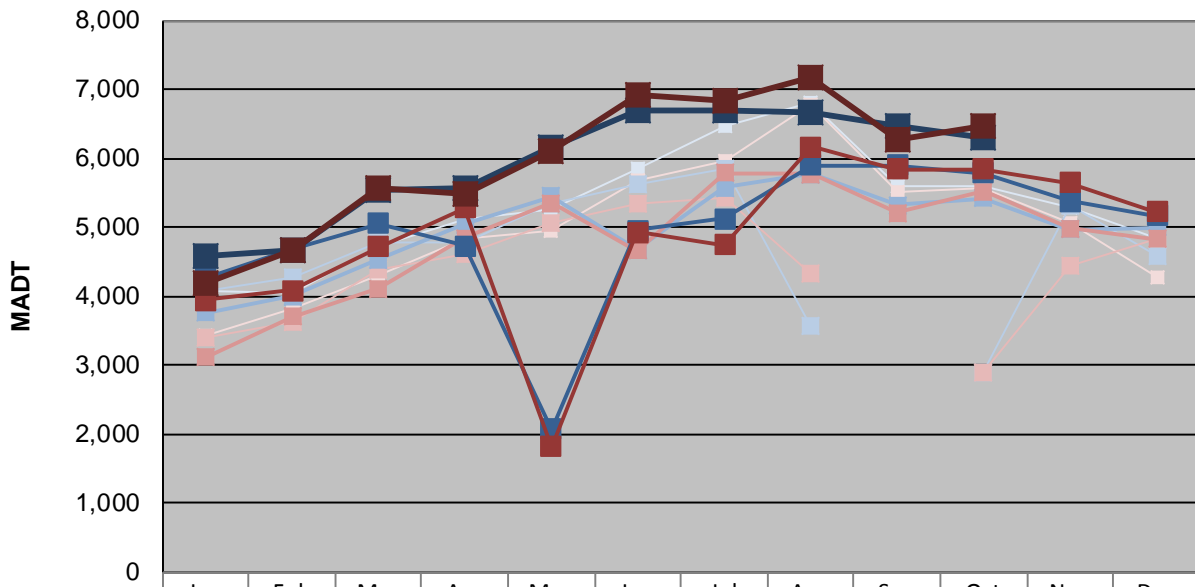
Station Measurement: VOLUME/SPEED/CLASS/WEIGHT		
Route: TH 60	Route Direction: E/W	Lanes: 4
County: Watonwan	Closest City: St James	
Functional Class: Rural Principal Arterial - Other		
Location: .7 MI W OF W JCT OF TH4, SW OF ST JAMES		
Ref Post: 064+00.850	True Mile: 64.929	Sequence No. 9830
Volume: 196,559		MADT: 6,341
Weekday (M-F) MADT: 6,296		Weekend (Sa-Su) MADT: 6,482



Note: No data Sep '13; road closed for reconstruction... Increase in traffic Jun/Jul '16 due to detour... Decrease in traffic Aug/Oct '13, Jun/Jul '14, and May to Jul '15 due to construction on... Volume data reported as ATR 197 from '12-'14



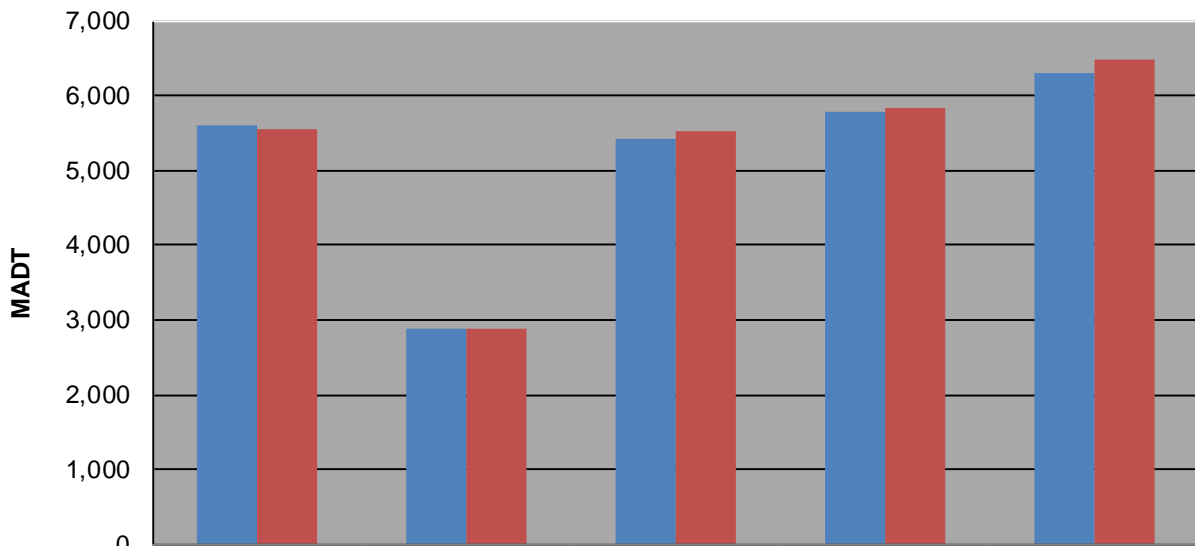
Weekday (WD)/Weekend (WE) Monthly Average Daily Traffic



	Jan	Feb	Mar	Apr	May	Jun	Jul	Aug	Sep	Oct	Nov	Dec
'12 WD	4,076	4,050	4,720	5,120	5,252	5,860	6,464	6,808	5,586	5,596	5,288	4,844
'12 WE	3,420	3,828	4,300	4,832	4,948	5,690	5,952	6,780	5,512	5,564	5,048	4,284
'13 WD	4,080	4,280	4,790	4,792	5,354	5,626	5,840	3,560		2,882	5,314	4,592
'13 WE	3,412	3,614	4,396	4,624	5,064	5,356	5,436	4,336		2,884	4,430	4,832
'14 WD	3,752	4,002	4,530	5,040	5,444	4,668	5,570	5,766	5,316	5,426	4,968	4,994
'14 WE	3,116	3,696	4,110	4,840	5,352	4,660	5,792	5,772	5,212	5,516	4,978	4,822
'15 WD	4,268	4,670	5,058	4,728	2,070	4,958	5,120	5,896	5,900	5,786	5,384	5,164
'15 WE	3,948	4,084	4,722	5,272	1,822	4,926	4,740	6,168	5,838	5,836	5,640	5,226
'16 WD	4,588	4,656	5,544	5,578	6,148	6,694	6,688	6,666	6,456	6,296		
'16 WE	4,180	4,662	5,578	5,482	6,100	6,912	6,842	7,182	6,260	6,482		

Note: 'Weekday' defined as Monday-Friday, 'Weekend' defined as Saturday-Sunday

Weekday/Weekend Monthly Average Daily Traffic ('12-'16)



	Oct-12	Oct-13	Oct-14	Oct-15	Oct-16
Weekday	5,596	2,882	5,426	5,786	6,296
Weekend	5,564	2,884	5,516	5,836	6,482