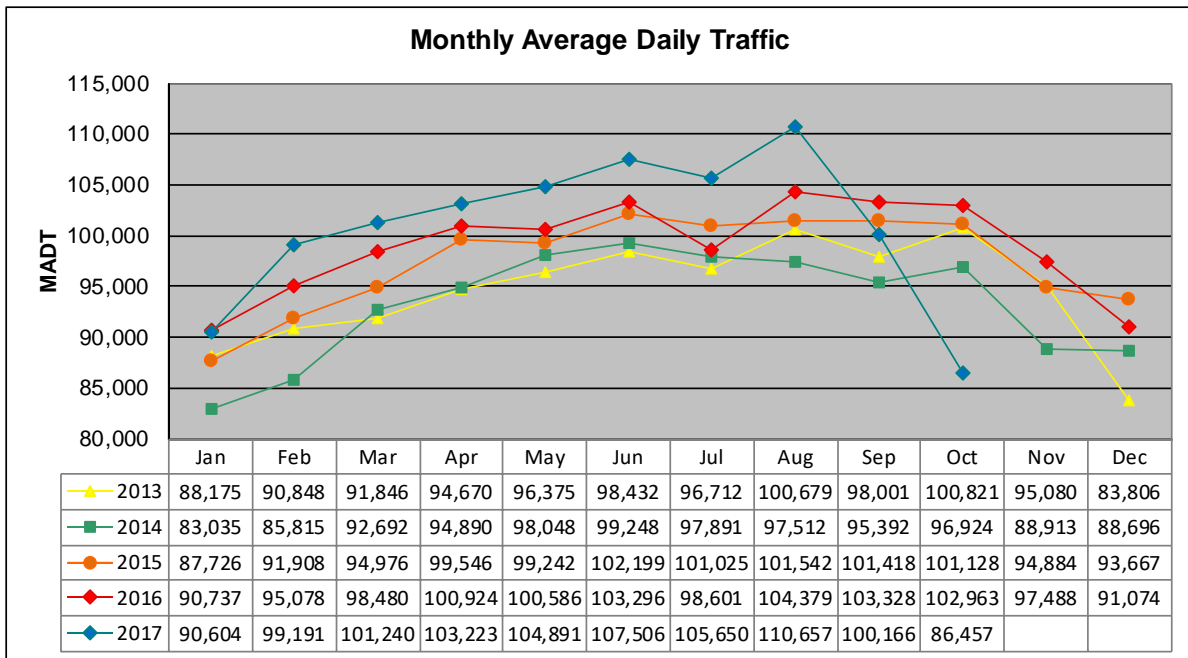


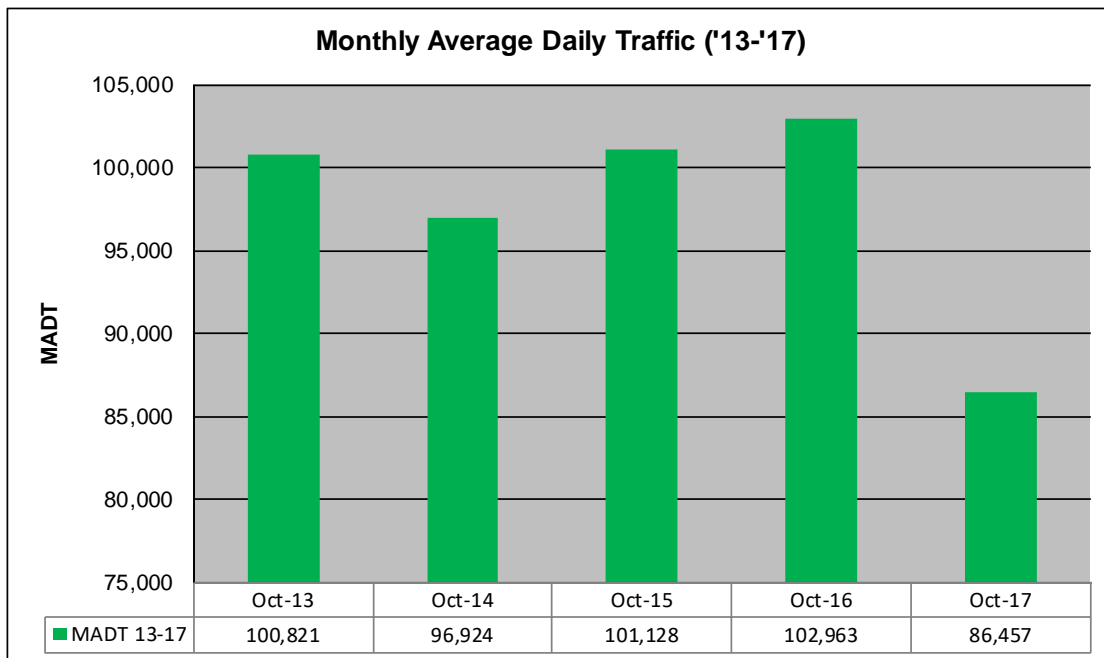
MONTHLY REPORT, STATION NO. 329 (ATR)

OCTOBER 2017

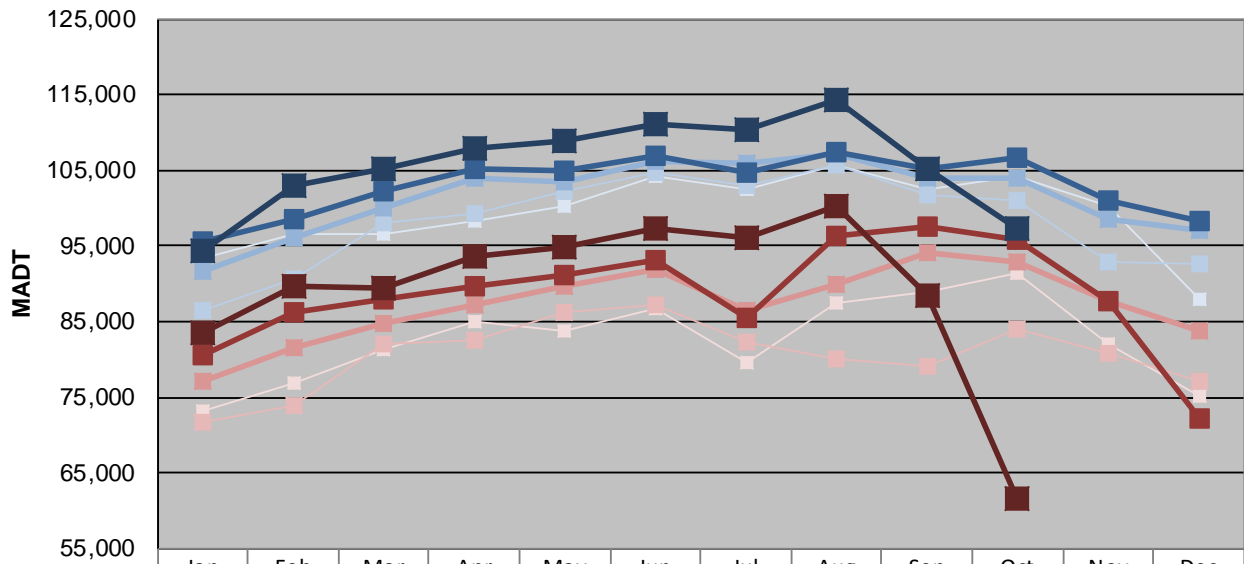
| | | |
|---|----------------------|-------------------------------------|
| Station Measurement: VOLUME | | |
| Route: I-35W | Route Direction: N/S | Lanes: 4 |
| County: Hennepin | | Closest City: Minneapolis |
| Functional Class: Urban Principal Arterial - Interstate | | |
| Location: AT FRANKLIN AVE IN MINNEAPOLIS | | |
| Ref Post: 016+00.680 | True Mile: 16.713 | Sequence No. 9851 |
| Volume: 2,680,162 | | MADT: 86,457 |
| Weekday (M-F) MADT: 97,370 | | Weekend (Sa-Su) MADT: 61,628 |



Note: Decrease in traffic October 2017 due to construction on I-35W



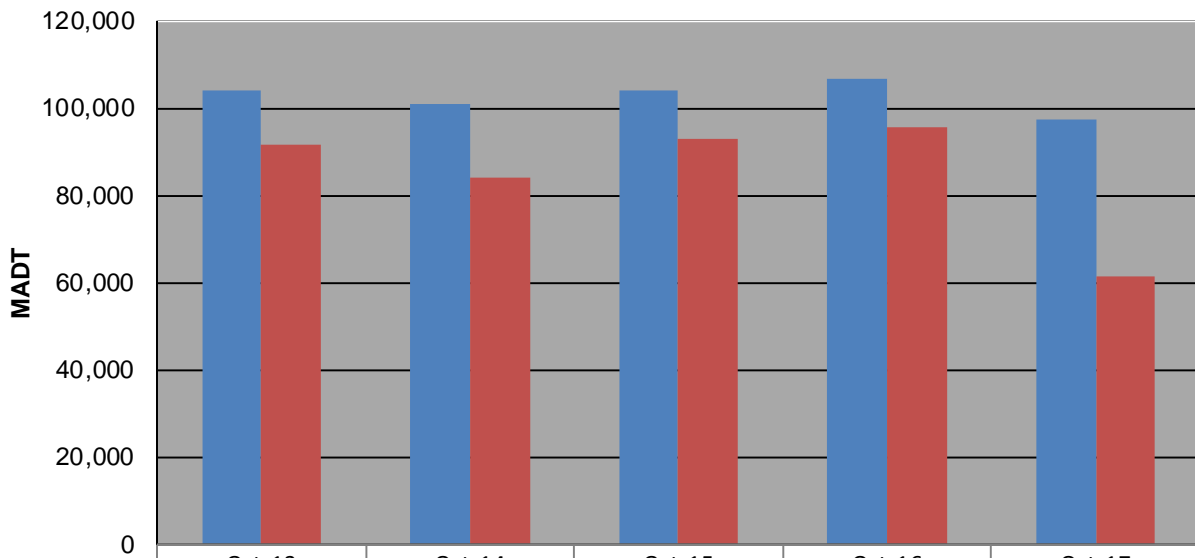
Weekday (WD)/Weekend (WE) Monthly Average Daily Traffic



| | Jan | Feb | Mar | Apr | May | Jun | Jul | Aug | Sep | Oct | Nov | Dec |
|--------|--------|---------|---------|---------|---------|---------|---------|---------|---------|---------|---------|--------|
| '13 WD | 93,434 | 96,456 | 96,588 | 98,236 | 100,370 | 104,238 | 102,390 | 105,602 | 102,424 | 104,124 | 100,152 | 87,968 |
| '13 WE | 73,206 | 76,828 | 81,260 | 84,934 | 83,728 | 86,820 | 79,688 | 87,538 | 89,030 | 91,458 | 82,126 | 75,158 |
| '14 WD | 86,534 | 90,586 | 97,976 | 99,394 | 102,174 | 104,746 | 102,966 | 105,734 | 101,664 | 101,122 | 92,926 | 92,598 |
| '14 WE | 71,786 | 73,892 | 82,138 | 82,412 | 86,224 | 87,332 | 82,276 | 79,974 | 79,052 | 84,042 | 80,890 | 77,220 |
| '15 WD | 91,600 | 96,040 | 99,948 | 103,972 | 103,512 | 106,058 | 105,992 | 107,168 | 103,978 | 103,962 | 98,556 | 96,978 |
| '15 WE | 77,238 | 81,582 | 84,784 | 87,202 | 89,756 | 91,934 | 86,598 | 90,022 | 94,128 | 92,982 | 87,586 | 83,792 |
| '16 WD | 95,636 | 98,574 | 102,178 | 105,234 | 105,034 | 106,860 | 104,696 | 107,348 | 105,122 | 106,634 | 100,922 | 98,178 |
| '16 WE | 80,506 | 86,174 | 87,878 | 89,664 | 91,140 | 93,032 | 85,406 | 96,344 | 97,528 | 95,818 | 87,654 | 72,076 |
| '17 WD | 94,332 | 103,030 | 105,070 | 108,024 | 108,786 | 111,058 | 110,344 | 114,302 | 105,196 | 97,370 | | |
| '17 WE | 83,562 | 89,596 | 89,462 | 93,624 | 94,782 | 97,422 | 96,052 | 100,224 | 88,398 | 61,628 | | |

Note: 'Weekday' defined as Monday-Friday, 'Weekend' defined as Saturday-Sunday

Weekday/Weekend Monthly Average Daily Traffic ('13-'17)



| | Oct-13 | Oct-14 | Oct-15 | Oct-16 | Oct-17 |
|---------|---------|---------|---------|---------|--------|
| Weekday | 104,124 | 101,122 | 103,962 | 106,634 | 97,370 |
| Weekend | 91,458 | 84,042 | 92,982 | 95,818 | 61,628 |