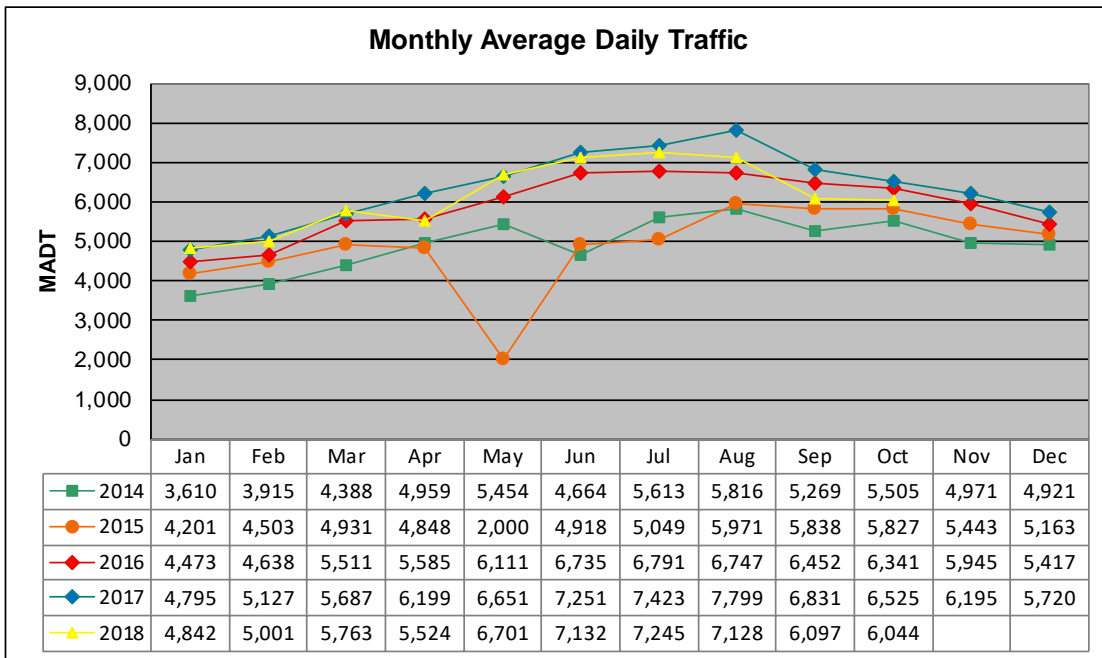


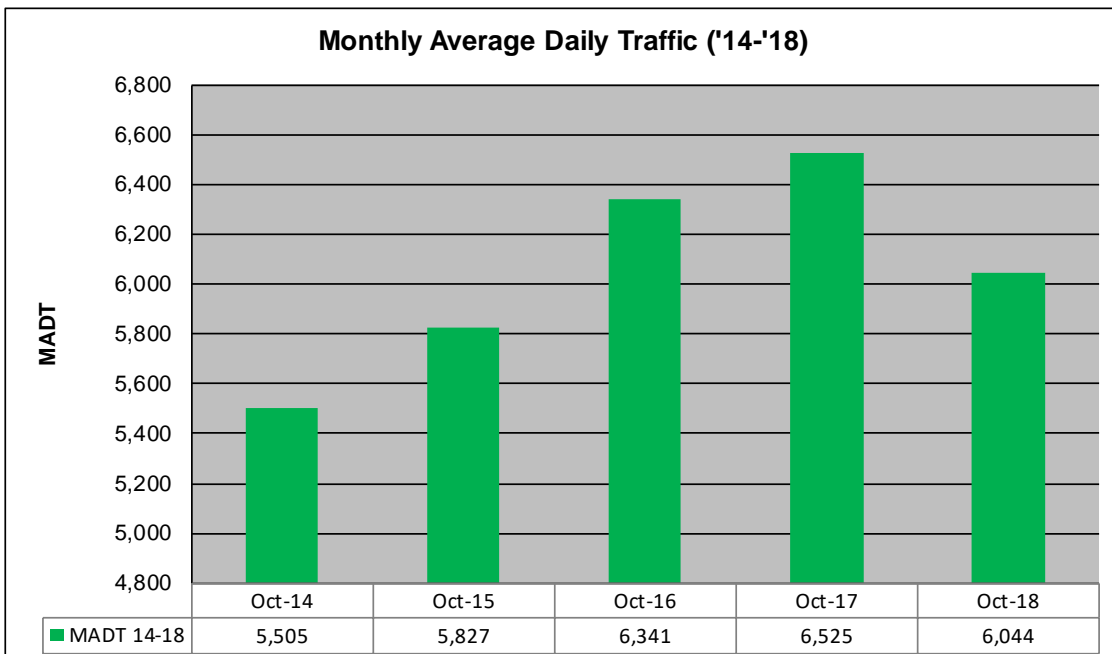
MONTHLY REPORT, STATION NO. 27 (WIM)

OCTOBER 2018

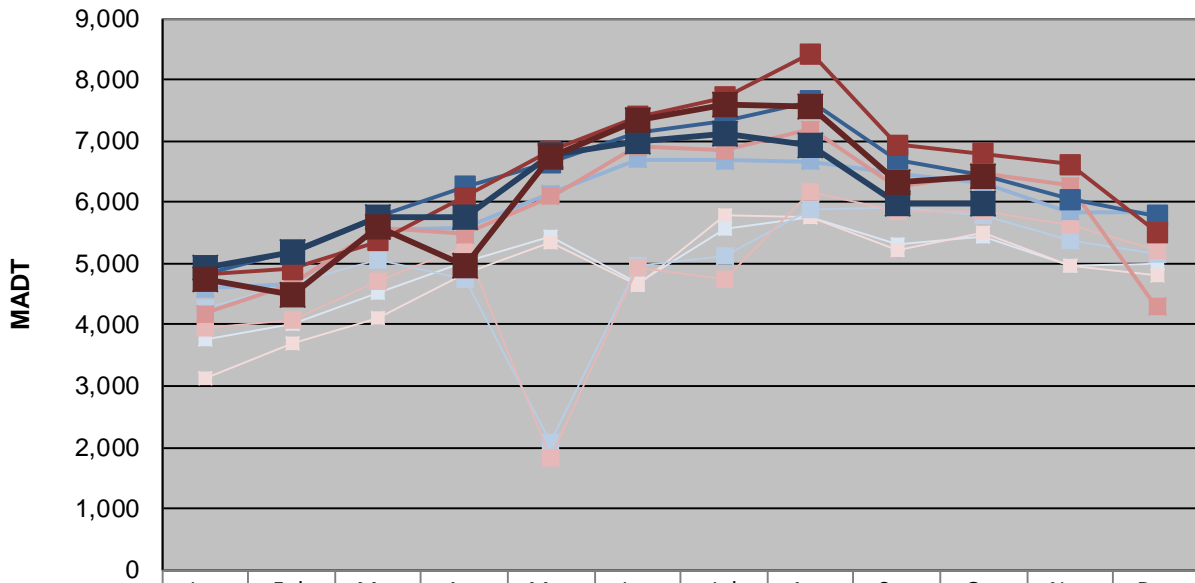
Station Measurement: VOLUME/SPEED/CLASS/WEIGHT		
Route: TH 60	Route Direction: E/W	Lanes: 4
County: Watonwan	Closest City: St James	
Functional Class: Rural Principal Arterial - Other		
Location: .4 MI E OF 690TH AVE, SW OF ST JAMES		
Ref Post: 064+00.108	True Mile: 64.203	Sequence No. 9830
Volume: 187,358		MADT: 6,044
Weekday (M-F) MADT: 5,994		Weekend (Sa-Su) MADT: 6,428



Note: Increase in traffic June/July 2016 due to detour... Decrease in traffic June/July 2014 and May to July 2015 due to construction... Volume data reported as ATR 197 during 2014



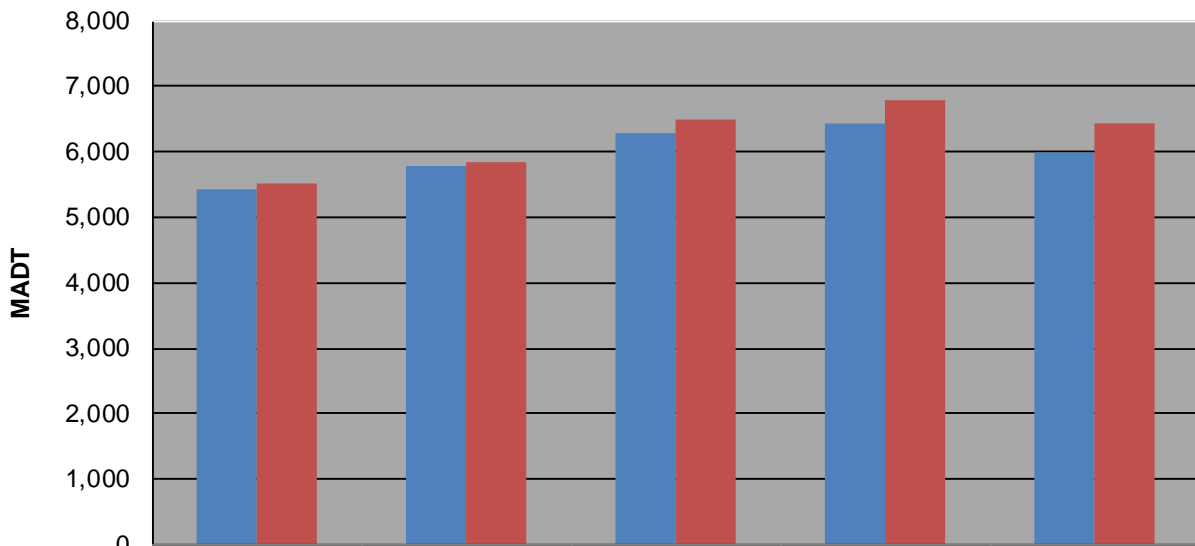
Weekday (WD)/Weekend (WE) Monthly Average Daily Traffic



	Jan	Feb	Mar	Apr	May	Jun	Jul	Aug	Sep	Oct	Nov	Dec
'14 WD	3,752	4,002	4,530	5,040	5,444	4,668	5,570	5,766	5,316	5,426	4,968	4,994
'14 WE	3,116	3,696	4,110	4,840	5,352	4,660	5,792	5,772	5,212	5,516	4,978	4,822
'15 WD	4,268	4,670	5,058	4,728	2,070	4,958	5,120	5,896	5,900	5,786	5,384	5,164
'15 WE	3,948	4,084	4,722	5,272	1,822	4,926	4,740	6,168	5,838	5,836	5,640	5,226
'16 WD	4,588	4,656	5,544	5,578	6,148	6,694	6,688	6,666	6,456	6,296	5,850	5,828
'16 WE	4,180	4,662	5,578	5,482	6,100	6,912	6,842	7,182	6,260	6,482	6,264	4,290
'17 WD	4,820	5,216	5,758	6,260	6,658	7,120	7,310	7,654	6,704	6,446	6,046	5,774
'17 WE	4,820	4,906	5,370	6,080	6,848	7,394	7,706	8,420	6,932	6,786	6,612	5,504
'18 WD	4,926	5,202	5,760	5,748	6,758	6,986	7,112	6,914	5,982	5,994		
'18 WE	4,748	4,500	5,588	4,958	6,752	7,340	7,602	7,570	6,330	6,428		

Note: 'Weekday' defined as Monday-Friday, 'Weekend' defined as Saturday-Sunday

Weekday/Weekend Monthly Average Daily Traffic ('14-'18)



	Oct-14	Oct-15	Oct-16	Oct-17	Oct-18
Weekday	5,426	5,786	6,296	6,446	5,994
Weekend	5,516	5,836	6,482	6,786	6,428