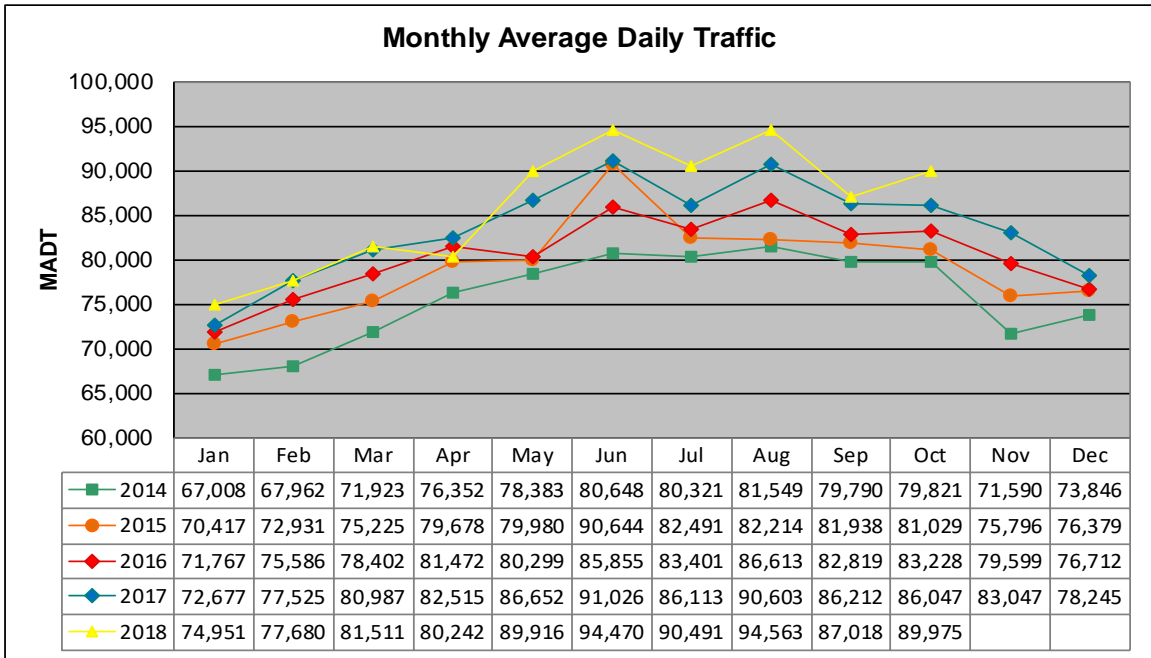


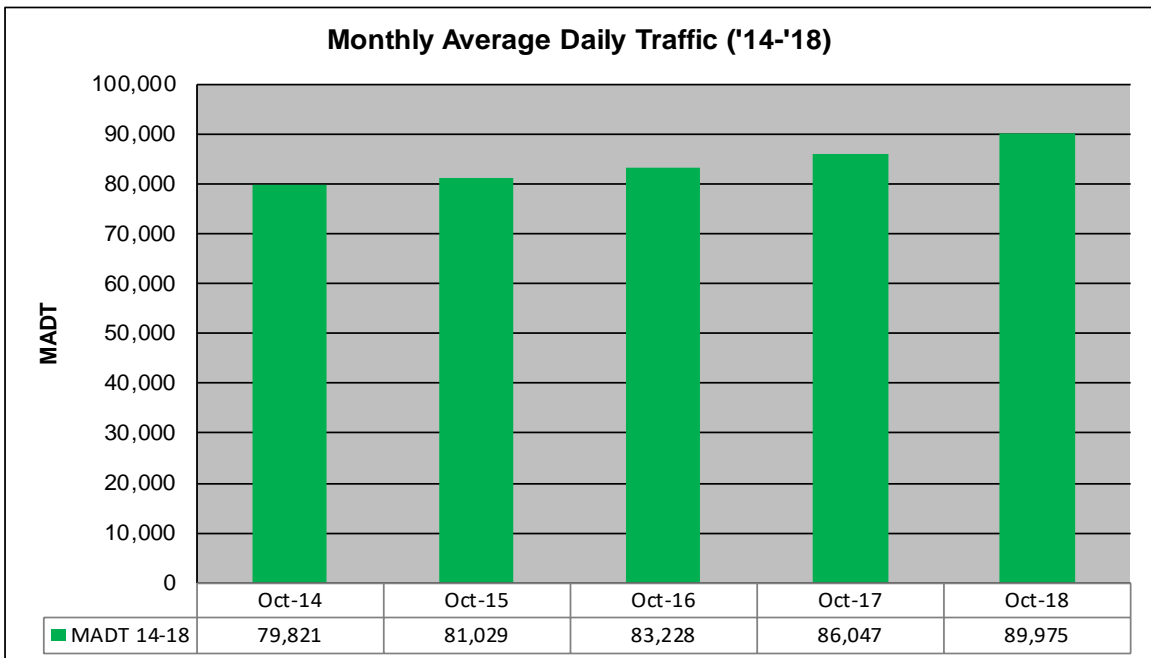
# MONTHLY REPORT, STATION NO. 336 (ATR)

## OCTOBER 2018

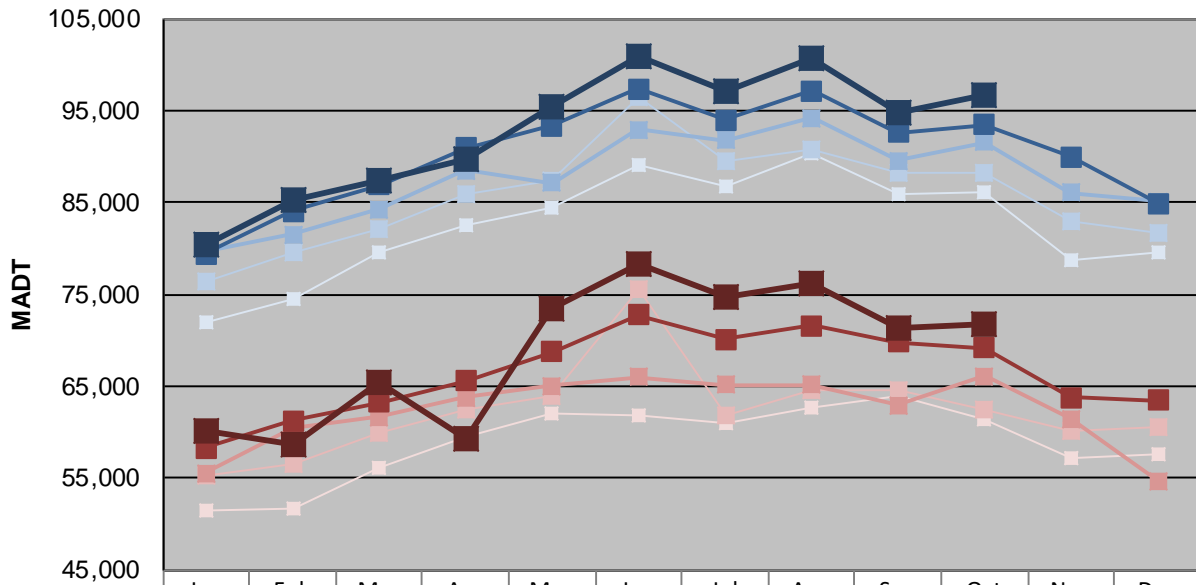
<b>Station Measurement: VOLUME</b>		
Route: I-35E	Route Direction: N/S	Lanes: 6
County: Dakota		Closest City: Eagan
Functional Class: Urban Principal Arterial - Interstate		
Location: N OF MSAS102 (DEERWOOD DR) IN EAGAN		
Ref Post: 095+00.422	True Mile: 95.48	Sequence No. 9854
<b>Volume: 2,789,210</b>		<b>MADT: 89,975</b>
<b>Weekday (M-F) MADT: 96,630</b>		<b>Weekend (Sa-Su) MADT: 71,856</b>



Note: Increase in traffic June 2015 due to detour from MN 77



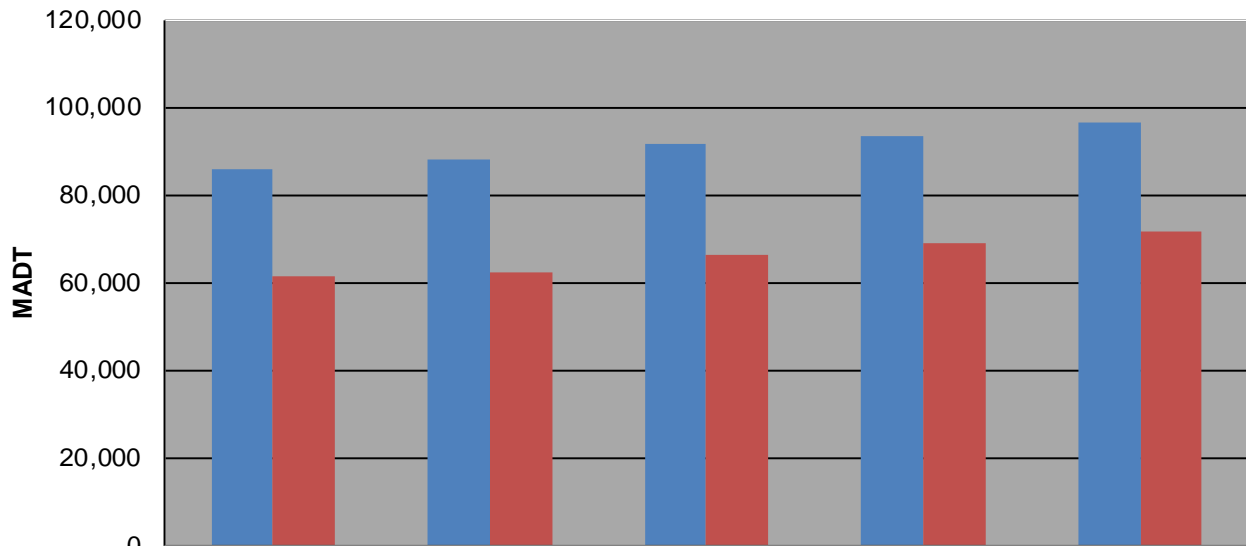
### Weekday (WD)/Weekend (WE) Monthly Average Daily Traffic



	Jan	Feb	Mar	Apr	May	Jun	Jul	Aug	Sep	Oct	Nov	Dec
'14 WD	72,026	74,480	79,634	82,506	84,428	89,130	86,714	90,340	85,944	86,024	78,768	79,486
'14 WE	51,572	51,670	56,130	59,578	61,984	61,874	61,030	62,772	63,922	61,356	57,234	57,578
'15 WD	76,344	79,494	82,148	85,896	87,284	96,400	89,486	90,760	88,172	88,152	83,028	81,786
'15 WE	55,232	56,522	59,934	62,454	64,036	75,662	61,752	64,604	64,612	62,438	60,116	60,608
'16 WD	79,584	81,526	84,284	88,534	87,162	92,956	91,812	94,226	89,582	91,582	86,038	85,104
'16 WE	55,538	60,382	61,658	63,772	65,018	66,034	65,190	65,130	62,942	66,148	61,476	54,746
'17 WD	79,432	84,040	86,928	90,974	93,308	97,406	93,972	97,158	92,572	93,450	89,988	84,958
'17 WE	58,320	61,240	63,248	65,598	68,782	72,782	70,080	71,642	69,824	69,160	63,834	63,444
'18 WD	80,514	85,308	87,300	89,658	95,448	100,99	97,094	100,69	94,862	96,630		
'18 WE	60,234	58,612	65,414	59,254	73,456	78,270	74,766	76,118	71,330	71,856		

Note: 'Weekday' defined as Monday-Friday, 'Weekend' defined as Saturday-Sunday

### Weekday/Weekend Monthly Average Daily Traffic ('14-'18)



	Oct-14	Oct-15	Oct-16	Oct-17	Oct-18
Weekday	86,024	88,152	91,582	93,450	96,630
Weekend	61,356	62,438	66,148	69,160	71,856