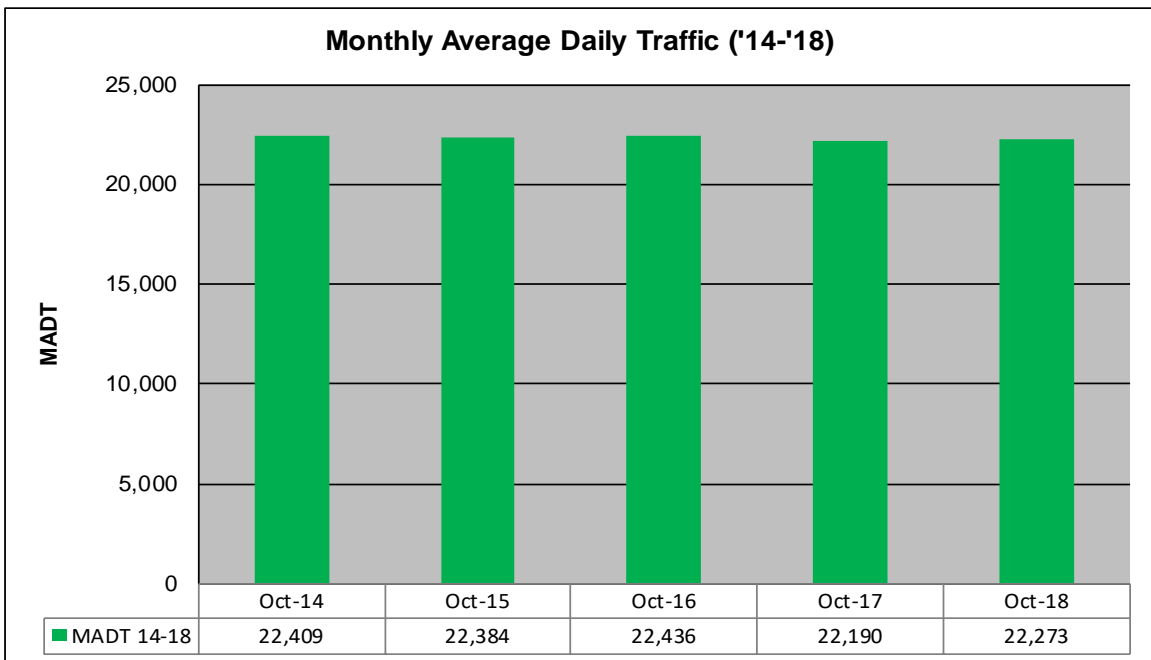
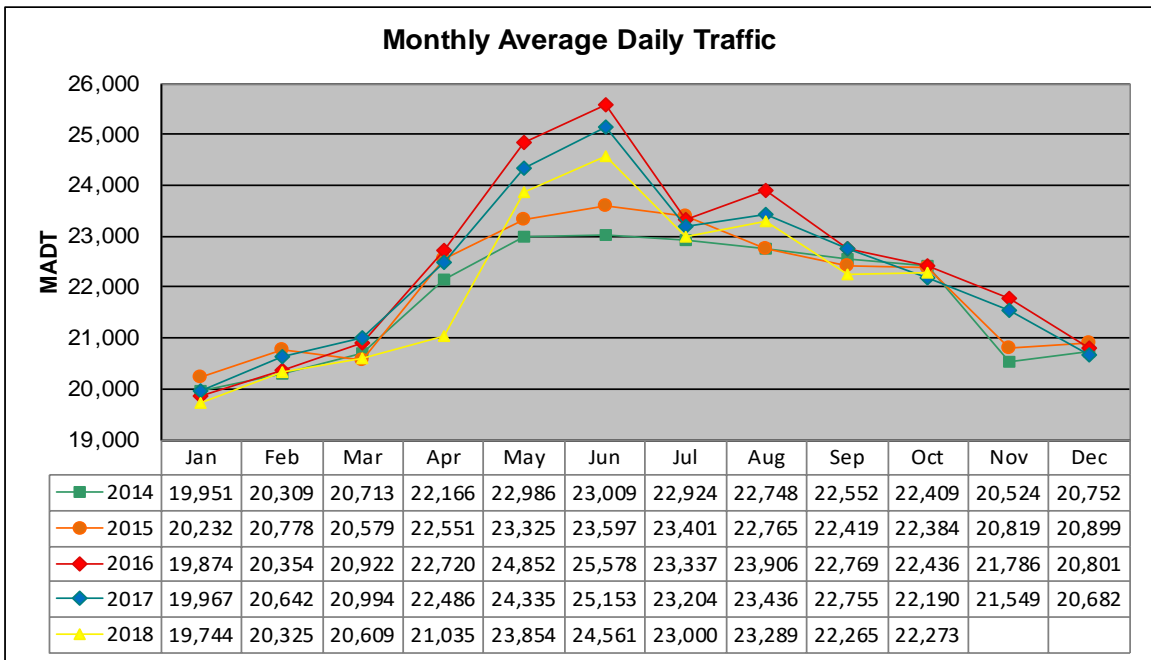


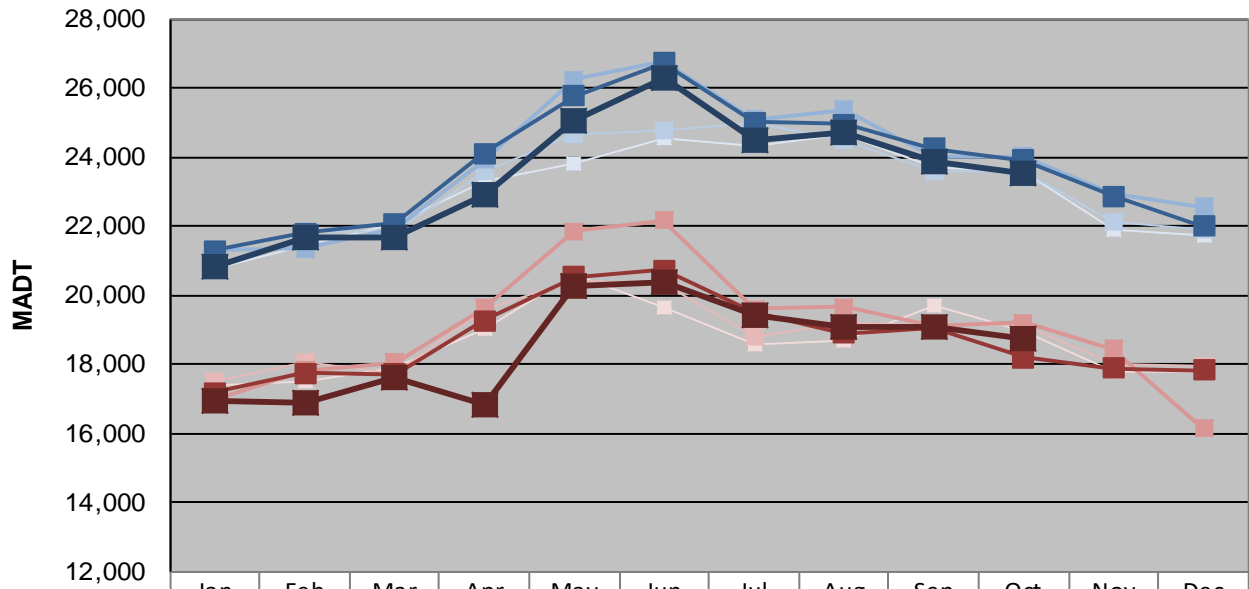
# MONTHLY REPORT, STATION NO. 425 (ATR)

## OCTOBER 2018

Station Measurement: VOLUME/SPEED/CLASS		
Route: CSAH 32	Route Direction: E/W	Lanes: 4
County: Dakota	Closest City: Eagan	
Functional Class: Urban Minor Arterial		
Location: W OF MSAS109 (JOHNNY CAKE RIDGE RD) IN EAGAN		
Ref Post: 004+00.840	True Mile: 4.84	Sequence No. 9896
<b>Volume: 690,465</b>		<b>MADT: 22,273</b>
<b>Weekday (M-F) MADT: 23,546</b>		<b>Weekend (Sa-Su) MADT: 18,718</b>



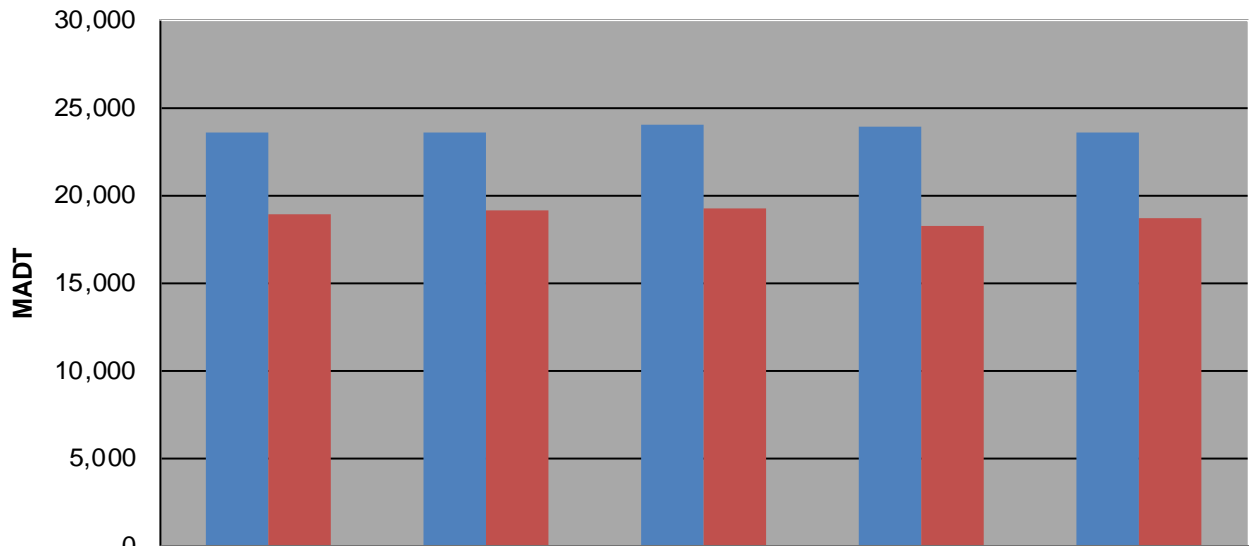
### Weekday (WD)/Weekend (WE) Monthly Average Daily Traffic



	Jan	Feb	Mar	Apr	May	Jun	Jul	Aug	Sep	Oct	Nov	Dec
'14 WD	20,762	21,426	22,088	23,294	23,806	24,546	24,316	24,682	23,674	23,566	21,896	21,736
'14 WE	17,372	17,518	17,918	19,050	20,584	19,672	18,602	18,714	19,688	18,948	17,780	17,814
'15 WD	21,250	21,858	21,864	23,612	24,644	24,790	24,978	24,506	23,568	23,608	22,120	21,874
'15 WE	17,526	18,080	17,742	19,576	20,460	20,344	18,774	19,188	19,162	19,162	18,028	17,958
'16 WD	21,292	21,338	21,932	23,918	26,236	26,764	25,100	25,378	24,024	24,010	22,926	22,556
'16 WE	16,948	17,838	18,050	19,642	21,854	22,162	19,592	19,650	19,130	19,206	18,456	16,140
'17 WD	21,284	21,806	22,082	24,104	25,754	26,734	25,016	24,960	24,246	23,918	22,870	21,982
'17 WE	17,194	17,736	17,724	19,252	20,528	20,736	19,486	18,886	19,054	18,202	17,882	17,842
'18 WD	20,810	21,694	21,666	22,934	25,026	26,296	24,458	24,720	23,854	23,546		
'18 WE	16,944	16,904	17,628	16,802	20,254	20,372	19,444	19,056	19,084	18,718		

Note: 'Weekday' defined as Monday-Friday, 'Weekend' defined as Saturday-Sunday

### Weekday/Weekend Monthly Average Daily Traffic ('14-'18)



	Oct-14	Oct-15	Oct-16	Oct-17	Oct-18
Weekday	23,566	23,608	24,010	23,918	23,546
Weekend	18,948	19,162	19,206	18,202	18,718