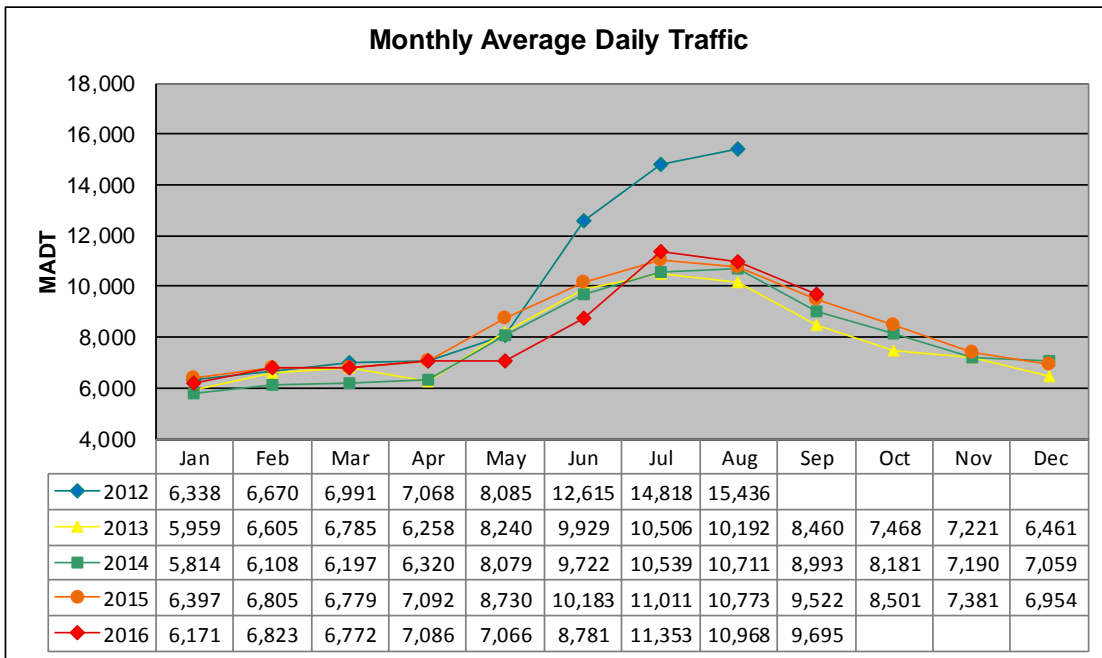


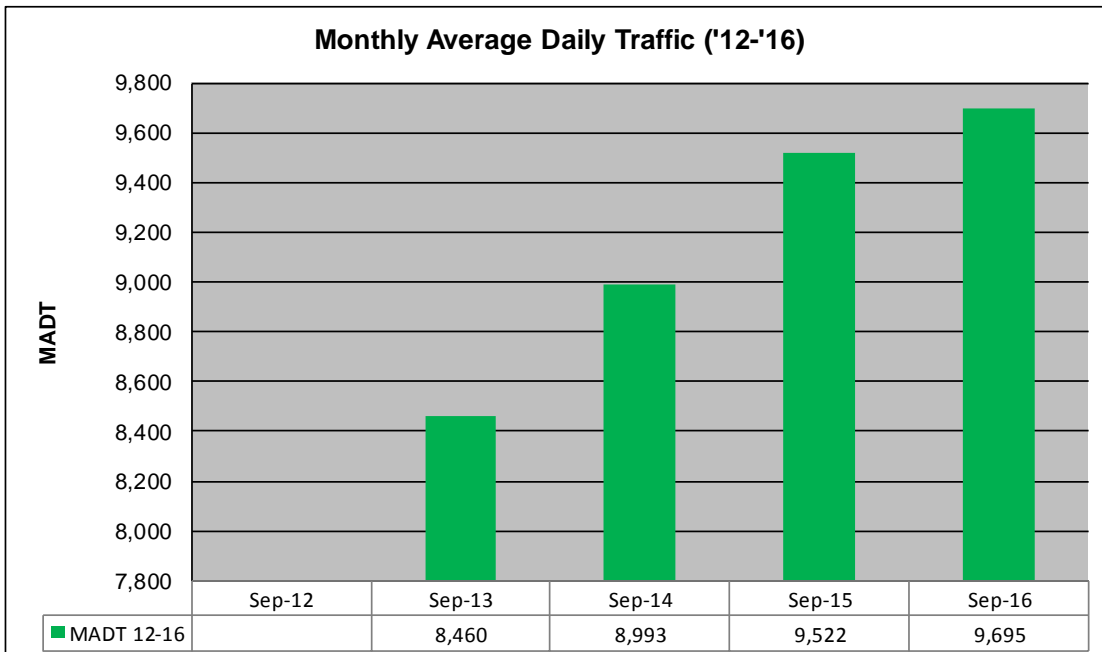
# MONTHLY REPORT, STATION NO. 29 (WIM)

## SEPTEMBER 2016

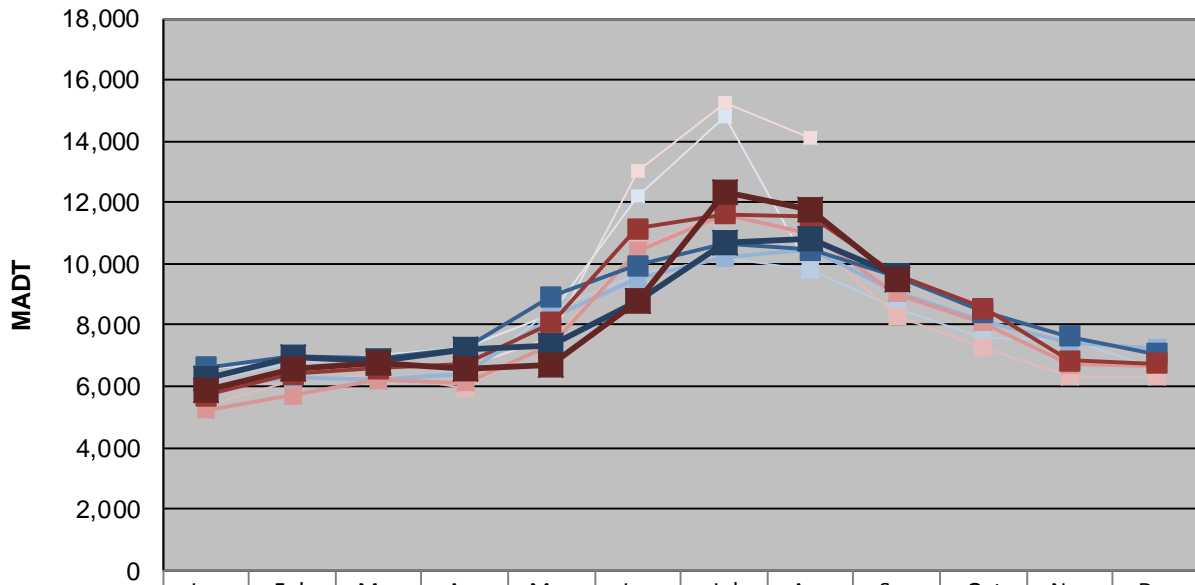
Station Measurement: VOLUME/SPEED/CLASS/WEIGHT		
Route: TH 53	Route Direction: N/S	Lanes: 4
County: St Louis	Closest City: Eveleth	
Functional Class: Rural Principal Arterial - Other		
Location: 3 MI S OF CSAH59 (MELRUDE RD), S OF EVELETH		
Ref Post: 042+00.100	True Mile: 42.218	Sequence No. 6763
<b>Volume: 290,858</b>		<b>MADT: 9,695</b>
<b>Weekday (M-F) MADT: 9,640</b>		<b>Weekend (Sa-Su) MADT: 9,486</b>



Note: No data September to December 2012 due to problem with equipment... Increase in traffic June to August 2012 due to detour from I-35... Decrease in traffic May/June 2016 due to construction on TH 53



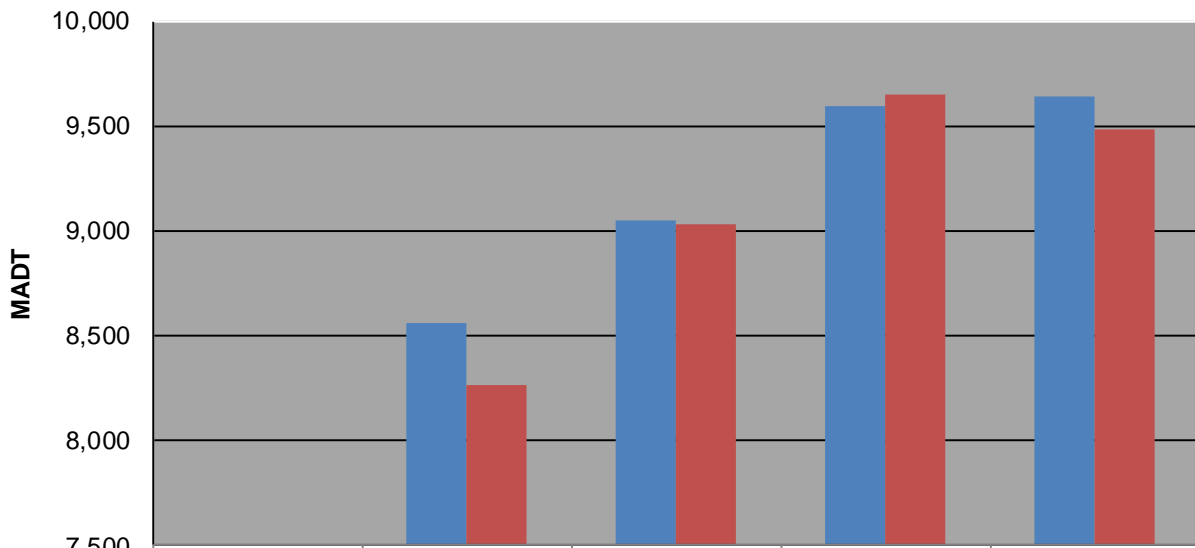
### Weekday (WD)/Weekend (WE) Monthly Average Daily Traffic



	Jan	Feb	Mar	Apr	May	Jun	Jul	Aug	Sep	Oct	Nov	Dec
'12 WD	6,568	6,800	7,036	7,284	8,356	12,220	14,828	9,784				
'12 WE	5,874	6,474	6,712	6,632	7,558	13,010	15,258	14,134				
'13 WD	6,186	6,764	6,902	6,384	8,460	9,646	10,192	9,788	8,558	7,574	7,534	6,588
'13 WE	5,390	6,208	6,378	5,912	7,460	10,496	11,694	10,800	8,264	7,300	6,318	6,296
'14 WD	5,972	6,270	6,210	6,434	8,262	9,518	10,196	10,440	9,044	8,146	7,434	7,246
'14 WE	5,214	5,706	6,224	6,112	7,360	10,414	11,624	10,988	9,034	8,092	6,702	6,680
'15 WD	6,630	6,966	6,916	7,234	8,932	9,938	10,682	10,458	9,590	8,416	7,626	7,058
'15 WE	5,700	6,400	6,586	6,728	8,076	11,156	11,638	11,538	9,646	8,542	6,848	6,750
'16 WD	6,286	6,946	6,832	7,220	7,312	8,776	10,718	10,836	9,640			
'16 WE	5,852	6,574	6,750	6,598	6,720	8,790	12,354	11,770	9,486			

Note: 'Weekday' defined as Monday-Friday, 'Weekend' defined as Saturday-Sunday

### Weekday/Weekend Monthly Average Daily Traffic ('12-'16)



	Sep-12	Sep-13	Sep-14	Sep-15	Sep-16
Weekday		8,558	9,044	9,590	9,640
Weekend		8,264	9,034	9,646	9,486