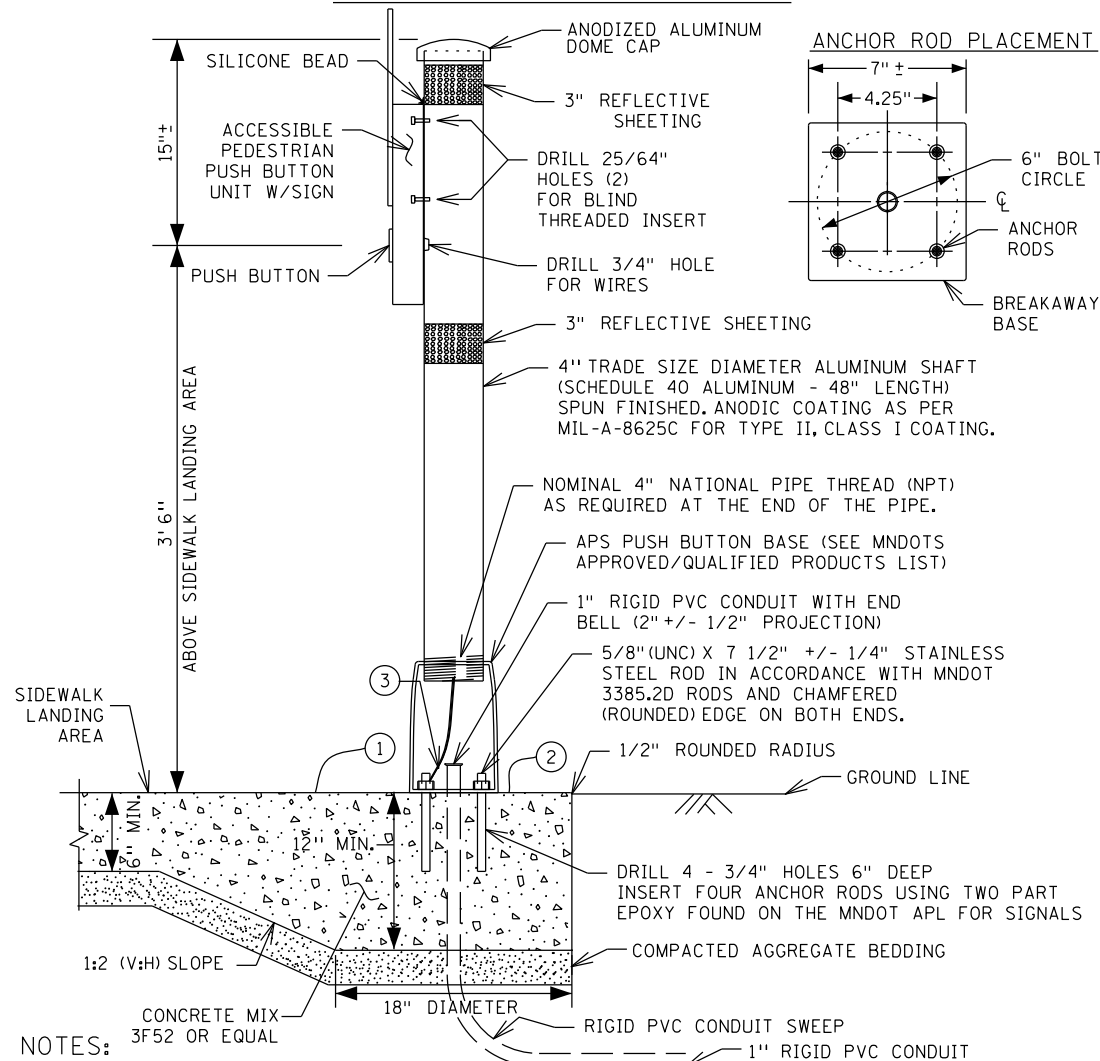


APS PUSH BUTTON STATION



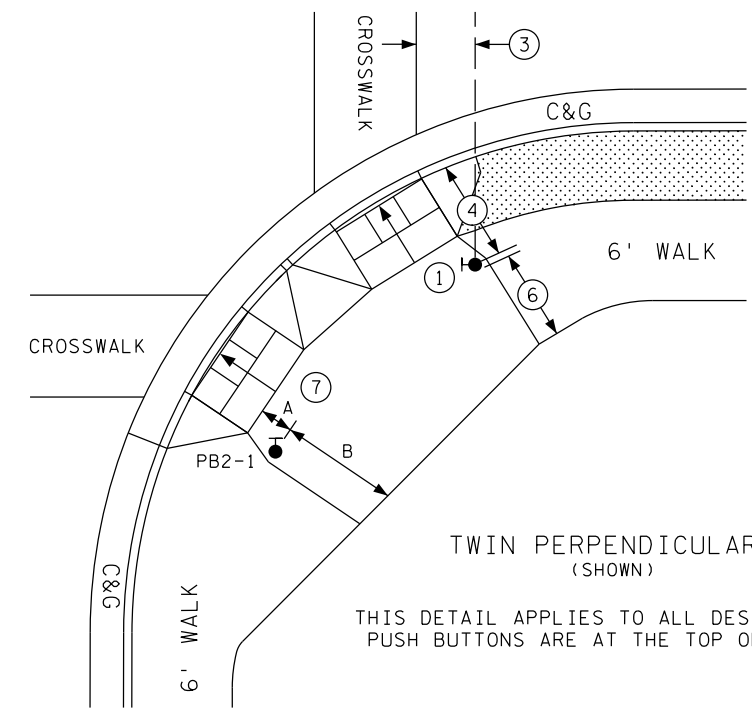
- NOTES:**
- PLACEMENT AND ORIENTATION OF THE PUSH BUTTON STATION IS CRITICAL. MOUNT THE BUTTON SO THAT THE FACE IS PARALLEL WITH THE ASSOCIATED CROSSWALK. SCREW IN SHAFT TO A TIGHTENED POSITION BEFORE MOUNTING ACCESSIBLE PEDESTRIAN PUSH BUTTON UNIT TO THE SHAFT.
 - ORIENT ACCESS OPENING ON THE BREAKAWAY PEDESTAL DIRECTLY BELOW THE APS BUTTON.
 - PLUMB THE PUSH BUTTON STATION WITH LEVELING SHIMS IN ACCORDANCE WITH STANDARD PLATE 8129.
 - INSTALL BLIND THREADED INSERTS USING MANUFACTURER'S SPECIFIC INSERTION TOOL.
 - USE ZINC PLATED STEEL 1/4 - 20 UNC BLIND THREADED INSERTS SUITABLE FOR MOUNTING ON SURFACE WALL THICKNESS OF .337. APPROVED BLIND INSERTS ARE LISTED ON MNDOT'S APPROVED/QUALITY PRODUCTS LIST WEBSITE FOR TRAFFIC SIGNALS.
 - USE APS 1/4 - 20 STAINLESS STEEL MOUNTING BOLTS. APPLY BRUSH ON ANTI SEIZE COMPOUND TO BOLTS PRIOR TO ASSEMBLY.
 - APPLY A BEAD OF 100% SILICONE SEALANT ALONG THE TOP OF THE PUSH BUTTON UNIT WHERE IT COMES IN CONTACT WITH THE 4" SHAFT.
 - USE WHITE REFLECTIVE SHEETING AT INTERSECTION CORNERS AND YELLOW REFLECTIVE SHEETING IN CENTER MEDIANS. APPROVED TUBE DELINEATOR SHEETING IS LISTED ON MNDOT'S APPROVED/QUALIFIED PRODUCTS LIST WEBSITE FOR SIGNING.
 - AN 18" X 6" FIBER FORMING TUBE MAY BE USED FOR THE LOWER HALF OF THE FOUNDATION WHEN CONDITIONS DO NOT ALLOW FOR THE 18" X 6" HOLE TO STAND OPEN.
- THE PUSH BUTTON STATION FOUNDATION IS MONOLITHIC (POURED AT ONE TIME) WITH THE SIDEWALK. PROVIDE A 1:2 (V:H) SLOPE GRADE WHERE THE 6" MIN SIDEWALK DEPTH TRANSITIONS TO THE 12" MIN FOUNDATION DEPTH. MAINTAIN THE COMPACTED AGGREGATE BEDDING AND THICKNESS USED FOR THE SIDEWALK THROUGHOUT THE SLOPE AND FOUNDATION GRADING. PROVIDE 1:2 (V:H) SLOPE GRADING 360 DEGREES FOR THE TRANSITION FROM THE SIDEWALK TO THE FOUNDATION WHEN THE FOUNDATION IS NOT LOCATED NEAR EDGE OF SIDEWALK AND IS SURROUNDED BY CONCRETE WALK.
 - ENSURE CONCRETE CONTROL JOINTS AND EDGE OF CONCRETE WALK ARE A MINIMUM 9" FROM THE CENTER OF THE PUSH BUTTON FOUNDATION.
 - INSTALL THE MANUFACTURER PROVIDED CABLE TETHER ASSEMBLY IN ACCORDANCE WITH THE MANUFACTURER'S INSTALLATION INSTRUCTIONS.

TYPICAL APS PEDESTRIAN PUSH BUTTON LOCATION

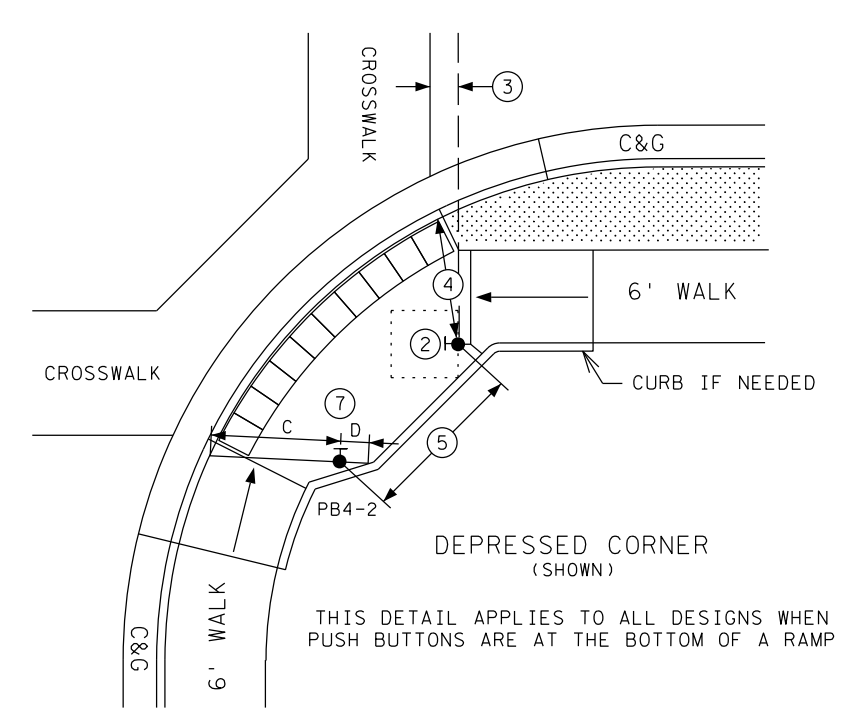
THIS IS A GENERAL DETAIL INTENDED TO SHOW THE REQUIREMENTS OF APS PUSH BUTTON LOCATION. FOR PROJECT SPECIFIC INFORMATION REGARDING PEDESTRIAN RAMP LAYOUT AND PUSH BUTTON LOCATIONS, SEE THE PLAN.

SUPPLEMENTAL GUIDANCE FOR CONSTRUCTING COMPLIANT APS PUSH BUTTONS:

- THE FACE OF THE BUTTON SHALL BE PARALLEL WITH THE OUTSIDE EDGE OF CROSSWALK.
- A MINIMUM 4 FT X 4 FT LANDING AREA SHALL BE PROVIDED ADJACENT TO EACH BUTTON, WITH A 2 PERCENT MAXIMUM SLOPE IN ALL DIRECTIONS.
- BUTTONS SHALL BE WITHIN 5 FT OF THE OUTSIDE EDGE OF THE CROSSWALK.
- BUTTONS SHALL BE BETWEEN 1.5 FT AND 10 FT FROM THE BACK OF CURB OR EDGE OF ROADWAY, MEASURED IN THE DIRECTION OF TRAVEL. STANDALONE PUSH BUTTON STATIONS SHOULD BE 4' MINIMUM FROM THE BACK OF CURB TO AVOID KNOCKDOWNS.
- BUTTONS MINIMUM 10 FT APART.
- PROVIDE A MAINTENANCE ACCESS ROUTE (MAR) WHEREVER POSSIBLE FOR SNOW REMOVAL PURPOSES. A MAR REQUIRES A 6 FT MINIMUM CLEAR DISTANCE BETWEEN A PUSH BUTTON AND ANY OBSTRUCTIONS, INCLUDING BUILDINGS, V-CURB, ELECTRICAL FOUNDATIONS, SIGNAL CABINETS, OR ANOTHER PUSH BUTTON.
- BUTTON SHOULD BE 2 FT MINIMUM FROM RAMP GRADE BREAK AND BACK OF WALK.

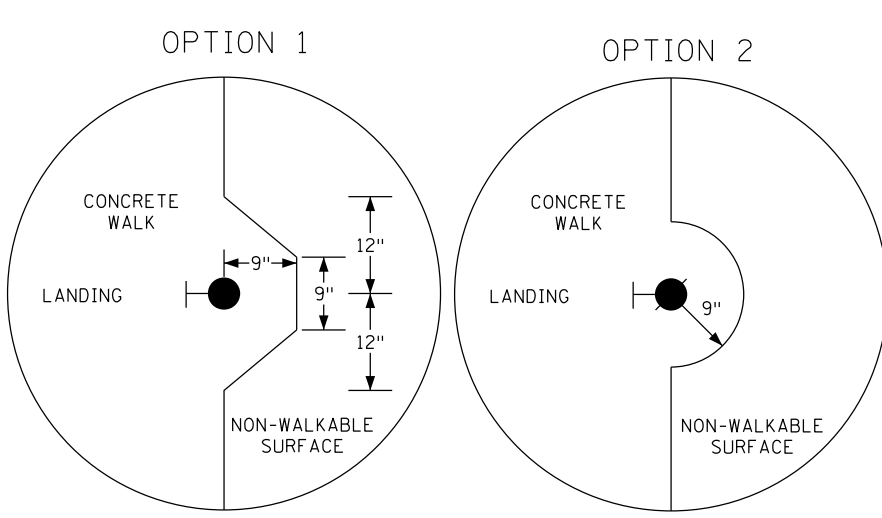


THIS DETAIL APPLIES TO ALL DESIGNS WHEN PUSH BUTTONS ARE AT THE TOP OF A RAMP



THIS DETAIL APPLIES TO ALL DESIGNS WHEN PUSH BUTTONS ARE AT THE BOTTOM OF A RAMP

CONTRACTOR MUST USE OPTION 1 OR 2 WHEN THE APS PUSH BUTTON IS SHOWN AT THE EDGE OF WALK. OPTION USED (OR SELECTED) MUST BE THE SAME THROUGHOUT THE ENTIRE PROJECT.



SIGNAL CONTROL POINTS			DISTANCE TO FRONT OF LANDING (FT)	DISTANCE TO BACK OF LANDING (FT)
SIGNAL NO.	X	Y		
PB2-1	-	-	A	B
PB4-2	-	-	C	D

- A - DISTANCE MEASURED FROM THE PUSH BUTTON TO THE FRONT OF LANDING/TOP OF RAMP
- B - CLEAR DISTANCE MEASURED FROM THE PUSH BUTTON TO THE BACK OF LANDING/EDGE OF WALK
- C - CLEAR DISTANCE MEASURED FROM THE PUSH BUTTON TO THE OUTSIDE EDGE OF DOMES IN THE DIRECTION OF TRAVEL
- D - CLEAR DISTANCE FROM THE PUSH BUTTON TO THE BACK OF LANDING MEASURED IN THE OPPOSITE DIRECTION OF TRAVEL

PLOTTED/REVISED: 26-JAN-2021

I/PLOT NAME: Sample Plan (1-26-21) PATH & FILENAME: OTST\SIGNALS\SamplePlan\Sample Plan (1-26-21).dgn

BY	DATE	REVISIONS	SYSTEM ID: XXXXX T.E. XXXX	S.A.P. NO. _____	DRAWN BY: _____	CKD BY: _____	DATE: _____
			METER ADDRESS: 9999 GRAND AVE, _____	CERTIFIED BY: _____	LIC. NO. _____	DATE: _____	
			OLD SYSTEM ID: _____	STATE PROJ. NO. XXXX-XX (T.H. 156) _____	SHEET NO. 4 OF 22 SHEETS		