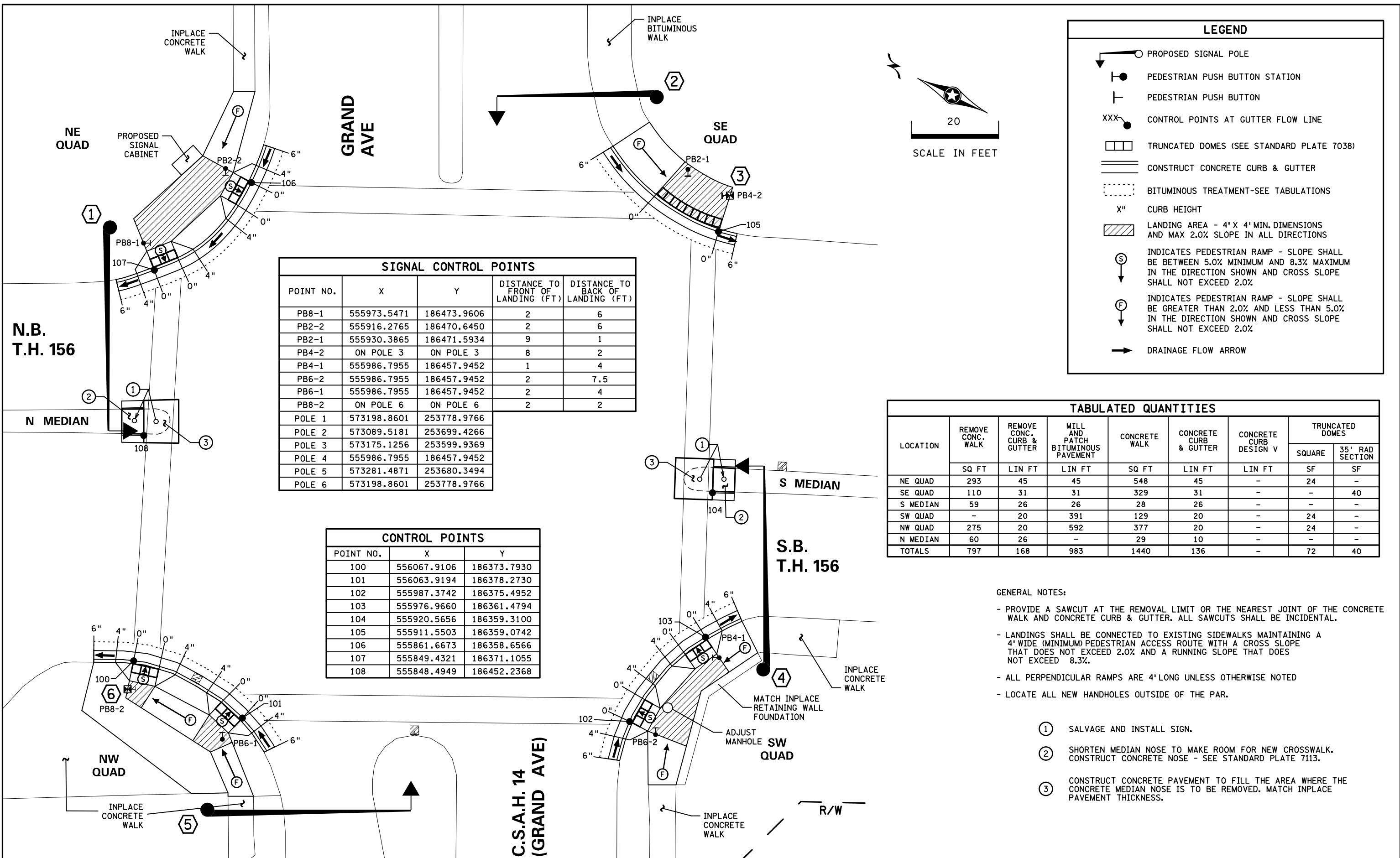


DISTRICT #: Metro  
 PLOT NAME: Ped Curb Ramp Detail (2-21-18)  
 PATH & FILENAME: OTST\Signals\SamplePlan\PedCurbRampExample\Ped Curb Ramp Detail (2-21-18).dgn  
 PLOTTED/REVISED: 21-FEB-2018



SIGNAL CONTROL POINTS				
POINT NO.	X	Y	DISTANCE TO FRONT OF LANDING (FT)	DISTANCE TO BACK OF LANDING (FT)
PB8-1	555973.5471	186473.9606	2	6
PB2-2	555916.2765	186470.6450	2	6
PB2-1	555930.3865	186471.5934	9	1
PB4-2	ON POLE 3	ON POLE 3	8	2
PB4-1	555986.7955	186457.9452	1	4
PB6-2	555986.7955	186457.9452	2	7.5
PB6-1	555986.7955	186457.9452	2	4
PB8-2	ON POLE 6	ON POLE 6	2	2
POLE 1	573198.8601	253778.9766		
POLE 2	573089.5181	253699.4266		
POLE 3	573175.1256	253599.9369		
POLE 4	555986.7955	186457.9452		
POLE 5	573281.4871	253680.3494		
POLE 6	573198.8601	253778.9766		

CONTROL POINTS		
POINT NO.	X	Y
100	556067.9106	186373.7930
101	556063.9194	186378.2730
102	555987.3742	186375.4952
103	555976.9660	186361.4794
104	555920.5656	186359.3100
105	555911.5503	186359.0742
106	555861.6673	186358.6566
107	555849.4321	186371.1055
108	555848.4949	186452.2368

**LEGEND**

- PROPOSED SIGNAL POLE
- PEDESTRIAN PUSH BUTTON STATION
- PEDESTRIAN PUSH BUTTON
- CONTROL POINTS AT GUTTER FLOW LINE
- TRUNCATED DOMES (SEE STANDARD PLATE 7038)
- CONSTRUCT CONCRETE CURB & GUTTER
- BITUMINOUS TREATMENT-SEE TABULATIONS
- C" CURB HEIGHT
- LANDING AREA - 4' X 4' MIN. DIMENSIONS AND MAX 2.0% SLOPE IN ALL DIRECTIONS
- INDICATES PEDESTRIAN RAMP - SLOPE SHALL BE BETWEEN 5.0% MINIMUM AND 8.3% MAXIMUM IN THE DIRECTION SHOWN AND CROSS SLOPE SHALL NOT EXCEED 2.0%
- INDICATES PEDESTRIAN RAMP - SLOPE SHALL BE GREATER THAN 2.0% AND LESS THAN 5.0% IN THE DIRECTION SHOWN AND CROSS SLOPE SHALL NOT EXCEED 2.0%
- DRAINAGE FLOW ARROW

LOCATION	TABULATED QUANTITIES						TRUNCATED DOMES	
	REMOVE CONC. WALK	REMOVE CONC. CURB & GUTTER	MILL AND PATCH BITUMINOUS PAVEMENT	CONCRETE WALK	CONCRETE CURB & GUTTER	CONCRETE CURB DESIGN V	SQUARE	35' RAD SECTION
	SQ FT	LIN FT	LIN FT	SQ FT	LIN FT	LIN FT	SF	SF
NE QUAD	293	45	45	548	45	-	24	-
SE QUAD	110	31	31	329	31	-	-	40
S MEDIAN	59	26	26	28	26	-	-	-
SW QUAD	-	20	391	129	20	-	24	-
NW QUAD	275	20	592	377	20	-	24	-
N MEDIAN	60	26	-	29	10	-	-	-
<b>TOTALS</b>	<b>797</b>	<b>168</b>	<b>983</b>	<b>1440</b>	<b>136</b>	<b>-</b>	<b>72</b>	<b>40</b>

- GENERAL NOTES:**
- PROVIDE A SAWCUT AT THE REMOVAL LIMIT OR THE NEAREST JOINT OF THE CONCRETE WALK AND CONCRETE CURB & GUTTER. ALL SAWCUTS SHALL BE INCIDENTAL.
  - LANDINGS SHALL BE CONNECTED TO EXISTING SIDEWALKS MAINTAINING A 4' WIDE (MINIMUM) PEDESTRIAN ACCESS ROUTE WITH A CROSS SLOPE THAT DOES NOT EXCEED 2.0% AND A RUNNING SLOPE THAT DOES NOT EXCEED 8.3%.
  - ALL PERPENDICULAR RAMPS ARE 4' LONG UNLESS OTHERWISE NOTED
  - LOCATE ALL NEW HANDHOLES OUTSIDE OF THE PAR.
- ① SALVAGE AND INSTALL SIGN.
  - ② SHORTEN MEDIAN NOSE TO MAKE ROOM FOR NEW CROSSWALK. CONSTRUCT CONCRETE NOSE - SEE STANDARD PLATE 7113.
  - ③ CONSTRUCT CONCRETE PAVEMENT TO FILL THE AREA WHERE THE CONCRETE MEDIAN NOSE IS TO BE REMOVED. MATCH INPLACE PAVEMENT THICKNESS.

BY	DATE	REVISIONS	SYSTEM ID:	T.E.	S.A.P. NO.	DRAWN BY:	CKD BY:	DATE: 02-21-18
			METER ADDRESS:		<b>PEDESTRIAN CURB RAMP CONSTRUCTION</b>			
			OLD SYSTEM ID:		CERTIFIED BY _____	LIC. NO. _____	DATE: _____	
					STATE PROJ. NO.	(T.H.)	SHEET NO.	OF SHEETS