

Sample Plan

GENERAL LAYOUT ----- NARRATIVE

References:

Design Scene: Chapter 1 - Title Sheet and General Layout

General Information:

Indicate on the general layout where in the plan the major components of the plan can be found. Sheet numbers can be labeled on the layout using different symbols for such things as topography sheets, construction plan sheets, drainage plan sheets, etc., with the corresponding sheet number inside the corresponding symbol. The symbols should be standard for all plans. Alternatively, a tabulation chart of the sheets can be used to show the major components of the plan.

Features shown should be bridges, ramps, frontage roads, retaining walls, noise walls, signal systems, ponds, rivers, creeks, city and county limits, borrow pits, streets, and other major features.

If possible, the entire project should be shown on one or two sheets. Reduce the project layout to an appropriate scale.

The Inplace roadways shall be shown with a dashed line and the new construction shall be shown with a solid line with cross-hatching as needed.

Show traffic volumes.

Show stationing in 500' or 1000' increments.

If Wetlands and Areas of Environmental Sensitivity are in the project area, show them on the General Layout if they are large enough to be clearly read. Otherwise, add a note indicating the sheets where they are shown, for instance on the Construction Plan sheets.

Sample Plan

GENERAL LAYOUT----- CHECKLIST

- 1. Bar Scale
- 2. Beginning & End of Project (show all Project S.P.'s and S.A.P.'s)
- 3. Projected Traffic Volumes
- 4. Legend
- 5. Reference Posts
- 6. North Arrows
- 7. City, County, and Corporate Limits
- 8. Bridge Numbers
- 9. Gravel Pits & Borrow Pits (if falls within map limits)
- 10. Stockpile Sites
- 11. Ponds
- 12. Railroad Crossings
- 13. Retaining Walls
- 14. Noise walls and Mounds
- 15. Signal Systems
- 16. Mainline, Side Streets and Cross Streets
- 17. Show Equations
- 18. Show Exceptions
- 19. RWIS (Road Weather Information System)
- 20. Stationing every 500' or 1000'
- 21. Drawn by: and Checked by: Initials and Engineer's signature

REVISION DATE 080719
 PLOTTED/REVISED: 16-OCT-2019

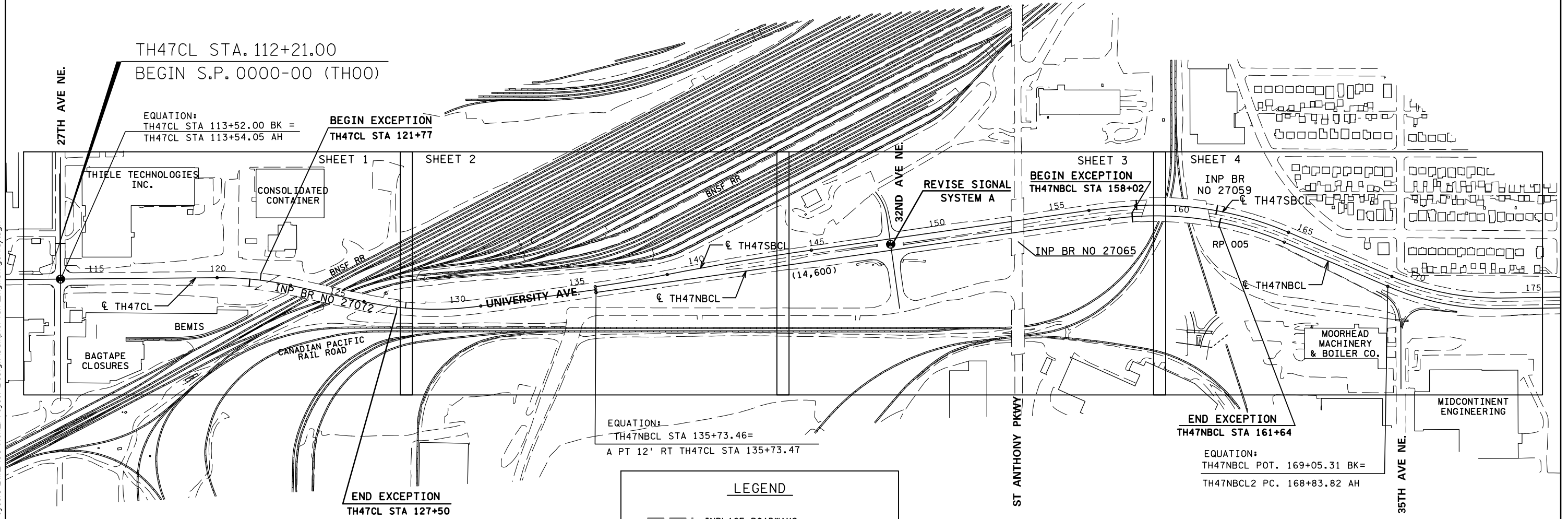
| SHEET ORIENTATION | | | | |
|--|----|----|----|----|
| LAYOUT SHEET NO./PLAN SHEET NO. | | | | |
| | 1 | 2 | 3 | 4 |
| INPLACE TOPOGRAPHY AND UTILITY PLAN | 41 | 42 | 43 | 44 |
| CONSTRUCTION PLAN | 48 | 49 | 50 | 51 |
| DRAINAGE, SUPERELEVATION & TURF ESTABLISHMENT PLAN | 62 | 63 | 64 | 65 |

NOTE: FOR AREAS OF ENVIRONMENTAL SENSITIVITY
 SEE THE CONSTRUCTION PLAN SHEETS.



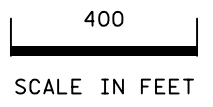
CITY OF MINNEAPOLIS
 HENNEPIN COUNTY

SAMPLE PLAN



LEGEND

- INPLACE ROADWAYS
- (XX,XXX) AVERAGE DAILY TRAFFIC (2013)
- INPLACE SIGNAL SYSTEM
- MUNICIPAL BOUNDARY



DISTRICT #: Metro
 IPLOT NAME: genlay
 FILENAME: Projects\DM罗斯\Work\Project\Design\SamplePlan\English\genlay.dgn

S.A.P. 000-000-00 (TH00)

SHEET 1 OF 2

GENERAL LAYOUT

REVISION DATE 08/07/19
 PLOTTED/REVISED: 16-OCT-2019

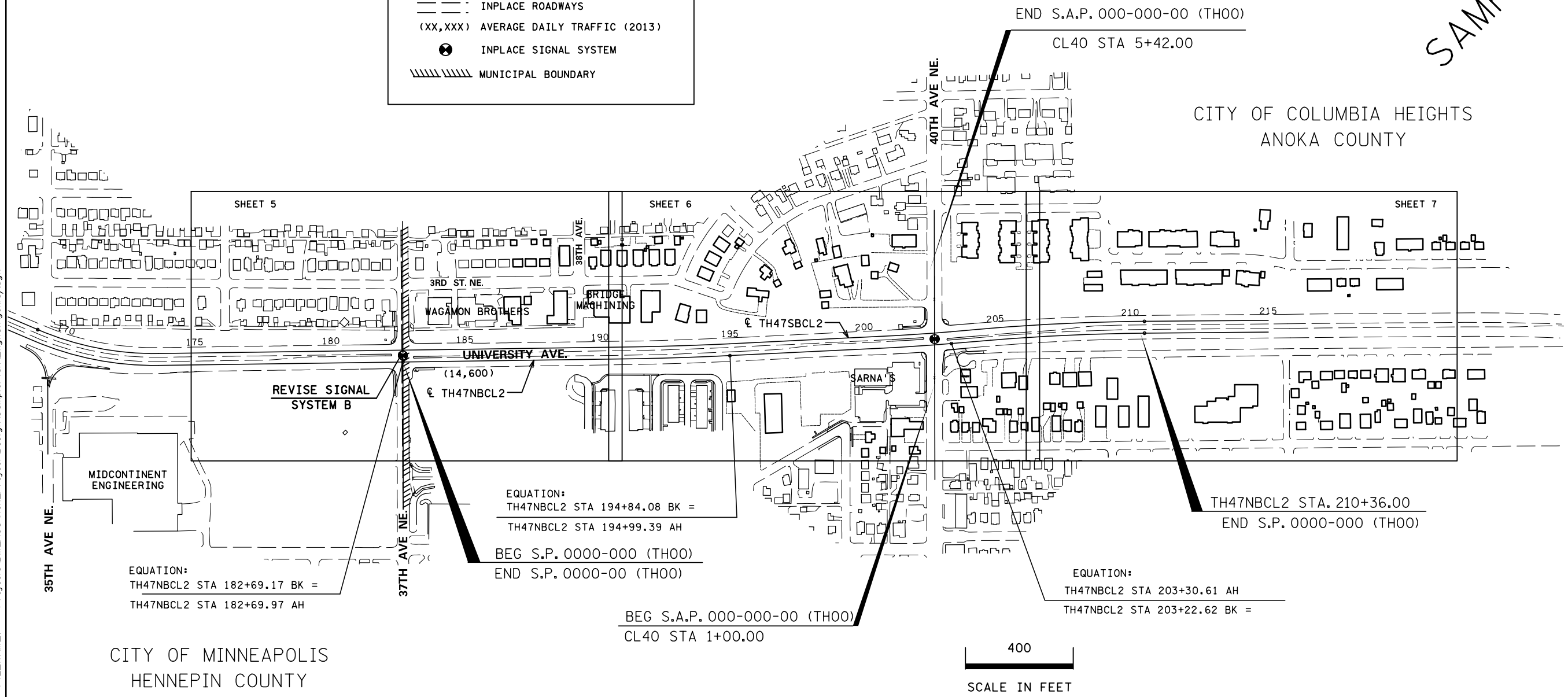


| SHEET ORIENTATION | | | | |
|--|-----------|----|----|---------------------|
| LAYOUT SHEET NO./PLAN SHEET NO. | SHEET NO. | | | TOTAL NO. OF SHEETS |
| | 5 | 6 | 7 | |
| INPLACE TOPOGRAPHY AND UTILITY PLAN | 45 | 46 | 47 | 7 |
| CONSTRUCTION PLAN | 52 | 53 | 54 | 7 |
| DRAINAGE, SUPERELEVATION & TURF ESTABLISHMENT PLAN | 66 | 67 | 68 | 7 |

NOTE: FOR AREAS OF ENVIRONMENTAL SENSITIVITY
 SEE THE CONSTRUCTION PLAN SHEETS.

| LEGEND | |
|--------|---------------------------------------|
| | INPLACE ROADWAYS |
| | (XX,XXX) AVERAGE DAILY TRAFFIC (2013) |
| | INPLACE SIGNAL SYSTEM |
| | MUNICIPAL BOUNDARY |

SAMPLE PLAN



DISTRICT #: Metro
 IPLOT NAME: genlay
 FILENAME: Projects\DM_ROS\Wor_Project\Design\SamplePlan\English\genlay.dgn

S.A.P. 000-000-00 (TH00)

SHEET 2 OF 2

| GENERAL LAYOUT | | | |
|----------------|----------------|--|--|
| DRAWN BY: GJ | CHECKED BY: HS | CERTIFIED BY _____ LIC. NO. 00000 DATE 8/10/17 | STATE PROJ. NO. 0000-00 (T.H. 00) SHEET NO. 3 OF 84 SHEETS |