

PREPARED BY
HIGHWAY PLANNING BUREAU
IN COOPERATION WITH
U.S. PUBLIC ROADS ADMINISTRATION

STATE OF MINNESOTA
DEPARTMENT OF HIGHWAYS
ROAD LIFE STUDIES
CONSTRUCTION PROJECT LOG RECORD

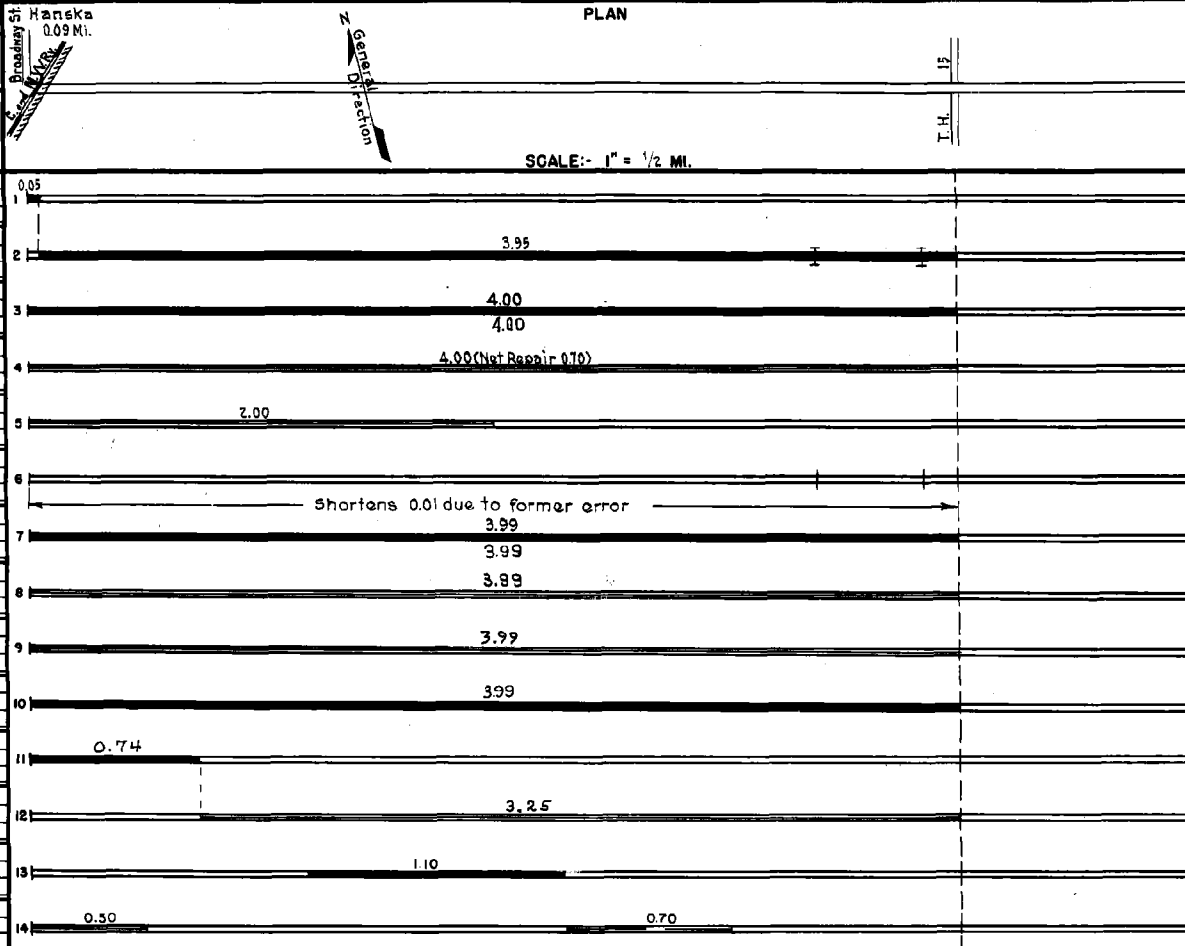
CONTROL SECTION 0808
TRUNK HIGHWAY 257
COUNTY Brown
DISTRICT 7B

LIMITS: Broadway St. in Hanska - Jct. T.H. 15

to Hanska
0.09 Mi.

PLAN

YEAR BUILT	PROJECT N°	DESCRIPTION			CODE N°
		TYPE	WIDTH	THICKNESS	
		Mixed Bit.	30'		
					No Record of Const. Added in 1949
		Gravel	26'		
		Br. 6948 & 6949	20'		No Record of Const. Added in 1949 21 B.S. & 20 B.S.
C		Bit Surfacing			MG1&SG-3, 41756 Gal.
1950	A.F.E. 17	Bit Surf. Tr. (3.95 Mi)	24'	3/4"	Agg. 1670 C.Y.
		Mixed Bit. (0.05 Mi)	24'	3/4"	added thickness
M		Spot Treat.			SG34RC5-1, 7808 Gal.
1951	A.F.E. 4	Bit Surf. Repair	24'		Agg. 151 C.Y.
		Fog Seal (4.00 Mi.)			
M					SG364 RC5-2, 19534 Gal.
1952	A.F.E. 4	Bit Surf. Repair	24'		Agg. 734 C.Y.
	A.F.E. 5	Light Seal Coat	24'		
C		Remove Br. 6948 & 6949			
1953	A.F.E. 822	Install C.M. Culvert Replacements			
C		Sand-Grav. Sub-base	27'	6-9"	
1953	0808-02	Gravel Base	27'	3"	
		Plant Mix Bit.	24'	2"	
M		Light Bit. Seal	25'		RS-2, 7044 Gal. Agg. 237 C.Y.
1953					
M		Bit Surf. Repair	24'		MC-800, 37583 Gal. Agg. 1860 C.Y.
1965	SF				
C		Plant Mix Bit. Agg. Shoulders	2 1/2'	2 1/2"	Right & Left
1972	0808-04				
M		Bit Overlay	24'	1 1/2"	Pl. Mix AG
1979	SF				
M		Seal Coat	24'		CRS-2 & FA2 Mod
1979	SF				
M		Bit Overlay	24'	1 1/2"	Pl. Mix 2331
1983	SF				
M		Seal Coat	24'		CRS-2 BFA-2 Mod
1983	SF				



YEARS		TOTAL MILES	UNINCORPORATED		INCORPORATED		RURAL		URBAN	
FROM	TO		RDWY. MI.	BR. MI.	RDWY. MI.	BR. MI.	RDWY. MI.	BR. MI.	RDWY. MI.	BR. MI.
1949	1952	4.00	3.90	0.01	0.09	0.00	0.00	3.99	0.01	0.00
1953		3.99	3.90	0.00	0.09	0.00	0.00	3.99	0.00	0.00

REMARKS: Layout is to scale as of 1949

