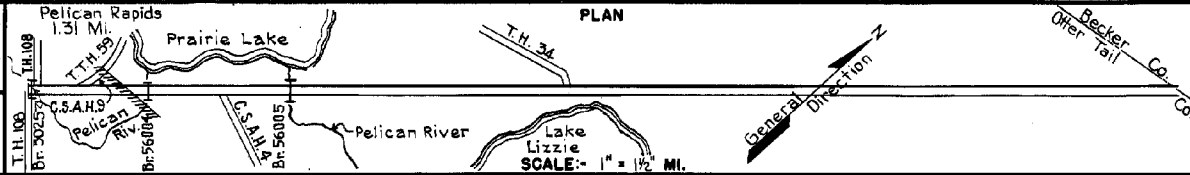


PREPARED BY
HIGHWAY PLANNING SURVEY
IN COOPERATION WITH
U.S. PUBLIC ROADS ADMINISTRATION

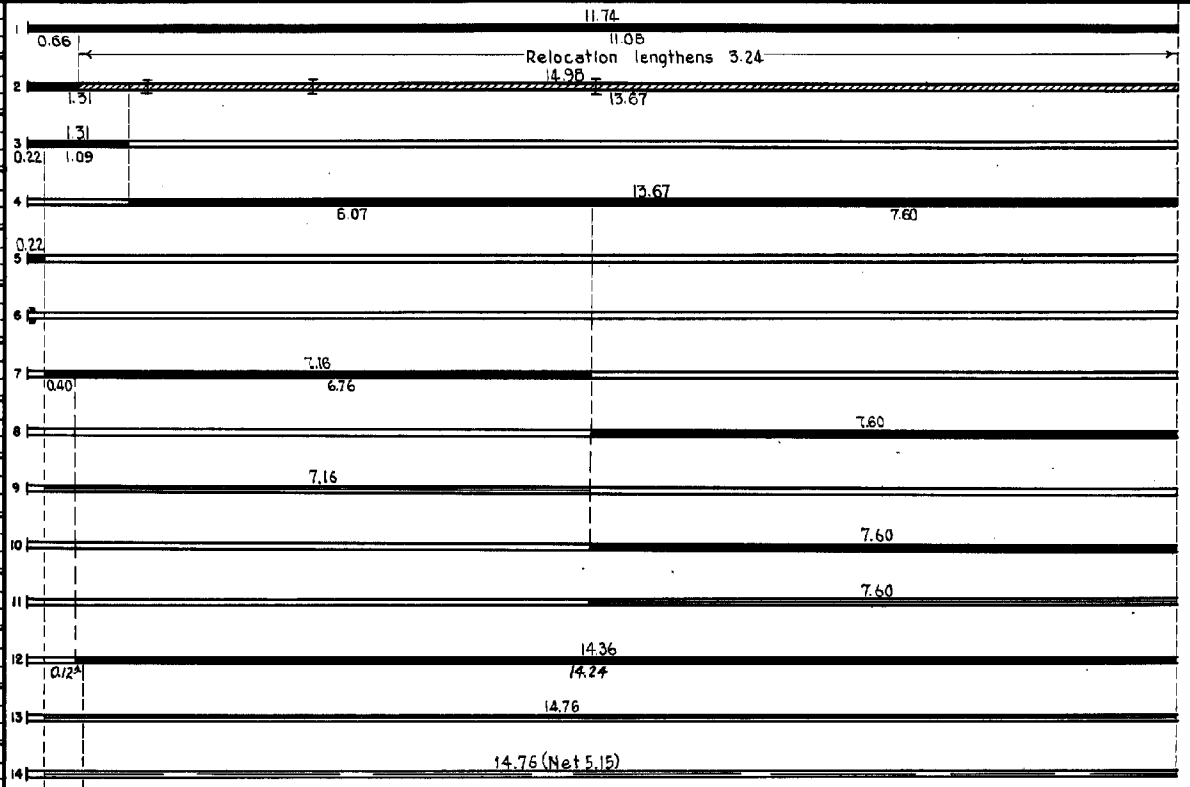
STATE OF MINNESOTA
DEPARTMENT OF HIGHWAYS
ROAD LIFE STUDIES
CONSTRUCTION PROJECT LOG RECORD

CONTROL SECTION 5618
TRUNK HIGHWAY 59
COUNTY Otter Tail
DISTRICT 4A

LIMITS: S. Jct. T.H. 106 in Pelican Rapids - N. Co. Line



YEAR BUILT	PROJECT N°	DESCRIPTION			CODE N°
		TYPE	WIDTH	THICKNESS	
		Earth Br. 5025	20'		No Record of Constr. 45 D.P.G.
1929	59=30-28A	Grading Gravel Br. 4822, 4823 & 4824	32' 26' 27'	2 1/2"	35 B.S., 35 B.S., 40 B.S.
1930	59=30-28A	Oil Tr. Gravel	NW		18,536 Gal./Mile. Maint. Dept.
1930	59=30-28A	Oil Tr. Gravel	27'	1 1/2"	18,536 Gal./Mile. Maint. Dept.
1931	59=30-10	Concrete	NW		
1931	59=30-28	Br. 5025	34'		43' D.P.G. Widening
1939	1938 A.F.E. 11 1939 A.F.E. 23 & 24	Stab. Gravel Base Bit. Surface Treat.	30' 24'	5" 3/8"	Maint. Dept.
C	1940 A.F.E. 17	Stab. Gravel	30'	4 1/2"	Maint. Dept.
M	1941 A.F.E. 19	Bit. Seal Coat			AC-1, 3389 Gal./Mi. B-Shof. 154 C.Y./Mi. Maint. Dept.
C	1941 A.F.E. 5	Mixed Bit.	26'	1"	Traveling Plant. Maint. Dept.
M	1942 A.F.E. 5	Bit. Seal Coat	26'		AC-1, 4332 Gal./Mi. Agg. 140 C.Y./Mi. Maint. Dept.
C	1948 A.F.E. 19 A.F.E. 23	Bit. Resurfacing Mixed Bit. Spot Grav. Lifts	24'	1" added	MC-3, 13,702 Gal. Agg. 10,171 Tons Spot Subgr. Corr.
M	1951 A.F.E. 4	Light Bit. Seal	24'		RCS-1, 26436 Gal. Agg. 637 C.Y.
M	1955 A.F.E. 604	Spot Treat Bit. Surf. Repair	24'		MC-3, 48,493 Gal. Agg. 3508 Tons



YEARS FROM	TO	TOTAL MILES	UNINCORPORATED		INCORPORATED		RURAL		URBAN	
			RDWY. MI.	BR. MI.	RDWY. MI.	BR. MI.	RDWY. MI.	BR. MI.	RDWY. MI.	BR. MI.
1927	1928	11.74	0.50	0.00	1.3	0.01	10.60	0.00	1.3	0.01
1929	1966	4.98	3.65	0.02	1.30	0.01	13.65	0.02	1.30	0.01
1967		4.84	3.50	0.03	1.30	0.01	13.50	0.03	1.30	0.01

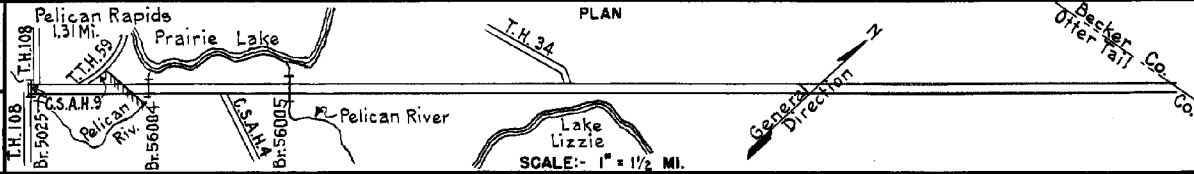
REMARKS: Layout is to scale as of 1929.
(1) This work not done under this project number but lies within the limits of this project.

PREPARED BY
HIGHWAY PLANNING SURVEY
IN COOPERATION WITH
U. S. PUBLIC ROADS ADMINISTRATION

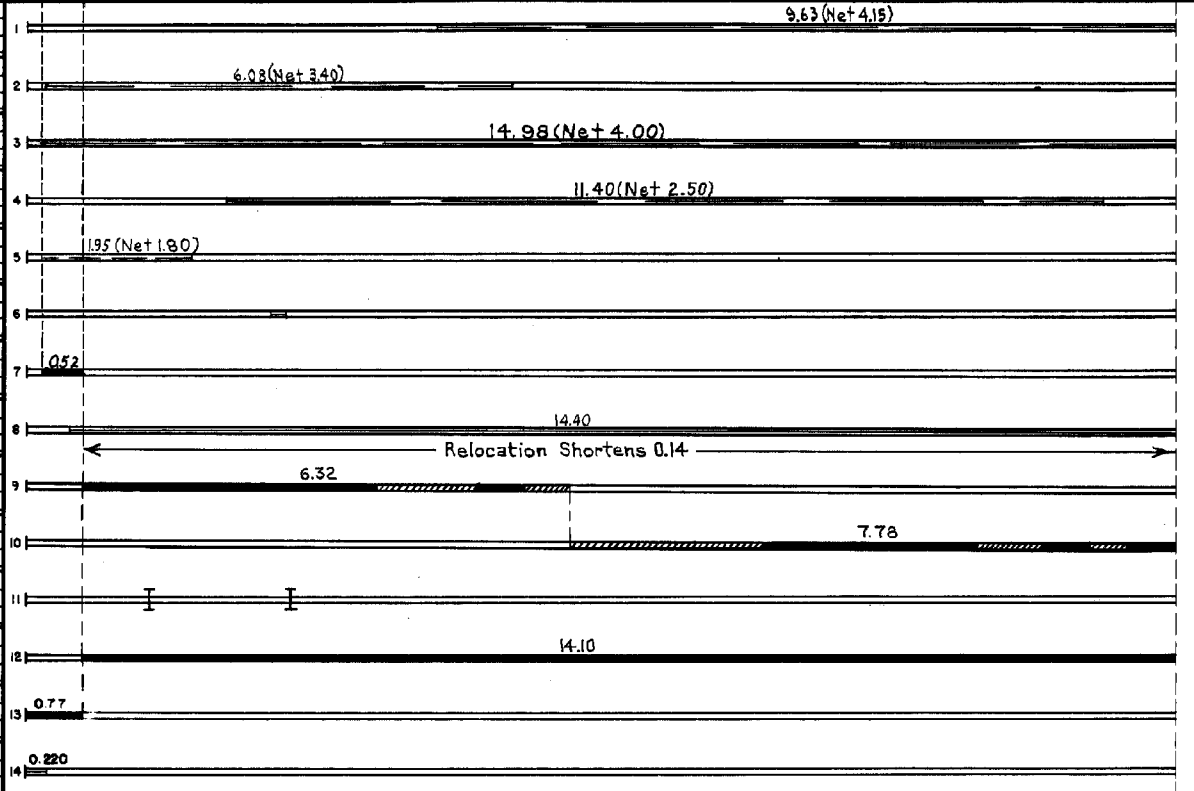
STATE OF MINNESOTA
DEPARTMENT OF HIGHWAYS
ROAD LIFE STUDIES
CONSTRUCTION PROJECT LOG RECORD

CONTROL SECTION 5618
TRUNK HIGHWAY 59
COUNTY Otter Tail
DISTRICT 4A

LIMITS: S. Jct. T.H. 108 in Pelican Rapids - N. Co. Line



YEAR BUILT	PROJECT N°	DESCRIPTION		REMARKS	CODE N°
		TYPE	WIDTH THICKNESS		
M 1956	A.F.E. 604	Spot Treat Bit. Surf. Repair	24'	MC-3, 38641 Gal. Agg. 2930 Tons	1
M 1957	A.F.E. 604	Spot Treat Bit. Surf. Repair	24'	MC-3, 32624 Gal. Agg. 2401 Tons	2
M 1958	A.F.E. 604	Spot Treat Bit. Surf. Repair	24'	MC-3, 38321 Gal. Agg. 2796 Tons	3
M 1959	A.F.E. 604	Spot Treat Bit. Surf. Repair	24'	MC-3, 23949 Gal. Agg. 1734 Tons	4
M 1960		Spot Treat Bit. Surf. Repair	24'	MC-3, 15347 Gal. Agg. 1218 Tons	5
C 1961		Construction of Roadside Park		By Maint.	6
C 1963	5618-10	Grading, Sub-base Gravel & Rd. mix bit. Plant mix bit.	52' 3"	12" gravel sub-base 5" gravel & 1" bit. base	7
M 1963		Light Bit. Seal	25'	RS-2, 26376 Gal. Agg. 915 C.V.	8
C 1967	5618-13	Grading Gravel Base Rd. Mix Bit. Base	4 1/2" 26' 1 1/2"	15" gravel sub-base or 12" select gran. const.	9
C 1967	5618-12	Grading Gravel Base Rd. Mix Bit. Base	4 1/2" 26' 1 1/2"	10" gr. sub-base or 12" select gran. const.	10
C 1967	5618-56004	Br. 56004	40'	75' P.C. - O.H.	11
C 1967	5618-56005	Br. 56005	40'	75' P.C. - O.H.	11
C 1971	5618-16	Plant Mix Bit.	24' 3-5/8"		12
C 1983	5618-18	Bit Surfacing	48' 2 1/2"		13
M 1985	SF	Conc. Pvm. Rehabilitation		Cont. # 4123	14



YEARS FROM	TOTAL MILES TO	UNINCORPORATED		INCORPORATED		RURAL		URBAN	
		RDWY. MI.	BR. MI.	RDWY. MI.	BR. MI.	RDWY. MI.	BR. MI.	RDWY. MI.	BR. MI.

REMARKS: See Sheet No. 1

