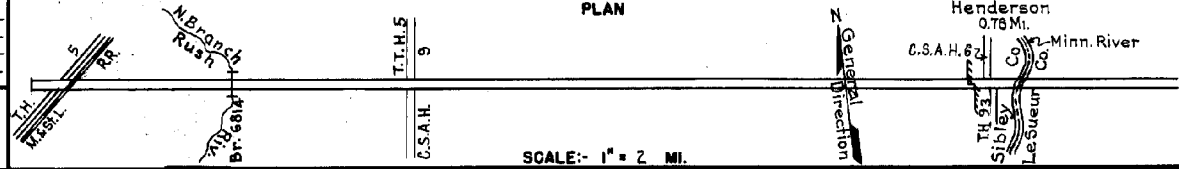


PREPARED BY
HIGHWAY PLANNING SURVEY
IN COOPERATION WITH
U.S. PUBLIC ROADS ADMINISTRATION

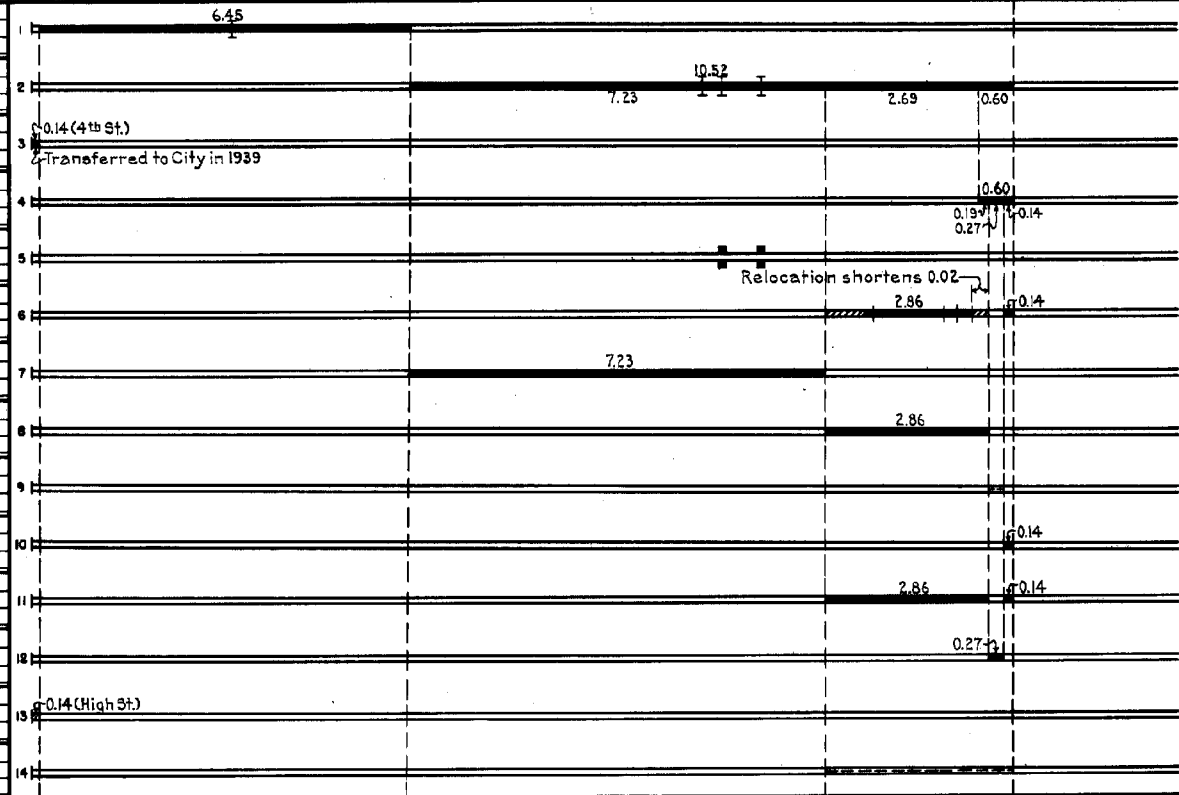
STATE OF MINNESOTA
DEPARTMENT OF HIGHWAYS
ROAD LIFE STUDIES
CONSTRUCTION PROJECT LOG RECORD

CONTROL SECTION 7206
TRUNK HIGHWAY 19
COUNTY Sibley
DISTRICT 7A

LIMITS: E. Jct. T.H. 9 - W. end of Bridge (Minn. River) in Henderson.



YEAR BUILT	PROJECT N ^o	DESCRIPTION			CODE N ^o
		TYPE	WIDTH	THICKNESS	
		On Tr. Gravel Br. 3750	30' 19'	1"	No Record of Constr. Added in 1934. 20 Conc. Stab.
		Gravel Br. 407, 995 & 993	30' 16'8"	4"	No Record of Constr. Added in 1934. 23 B.S., 20 B.S. & 8 B.S.
(1)	1930 19-22-27A	Concrete.	20'	9-79	Widened to 56' by village. Added in 1934.
		Bit. Treatment	30'	1"	No Record of Constr. Road Inventory reported Bit. Tr.
1935		Br. 995 Br. 993	23' 21'		Widen 20 B.S. Widen 8 B.S.
1938	7206-03 19-100-22-1	Grading Mono. Culverts	33'		4-W46.
1938	A.F.E. 36	Bit. Surf. Treat.	24'	7/8"	Maint. Dept.
1939	7206-05	Stab. Grav. Base	25'	6"	
1939	7206-01	Misc. Constr.			Removed rock gutter at curb and replaced with stab. agg. base.
1939	7206-01	Stab. Grav. Base	32'	2"	
1939	7206-02 & 04	Mixed Bitum.	24'	1 3/4"	
1939	7206-02	Mixed Bitum.	63'	1 3/4"	
(2)	1930 22-22-27-A	Concrete	20'	9-79	Added in 1939.
C	1940 A.F.E. 5	Guard Rail			Maint. Dept.



YEARS FROM	TO	TOTAL MILES	UNINCORPORATED		INCORPORATED		RURAL		URBAN	
			RDWY. MI.	BR. MI.	RDWY. MI.	BR. MI.	RDWY. MI.	BR. MI.	RDWY. MI.	BR. MI.
1934	1938	17.11	15.84	0.01	1.26	0.00	15.64	0.01	0.46	0.00
1939	1948	17.09	15.84	0.01	1.24	0.00	15.62	0.01	0.45	0.00
1949	1951	16.51	15.69	0.01	0.81	0.00	16.27	0.01	0.03	0.00
1952		15.57	14.78	0.01	0.78	0.00	15.56	0.01	0.00	0.00

REMARKS: Layout is to scale as of 1939.

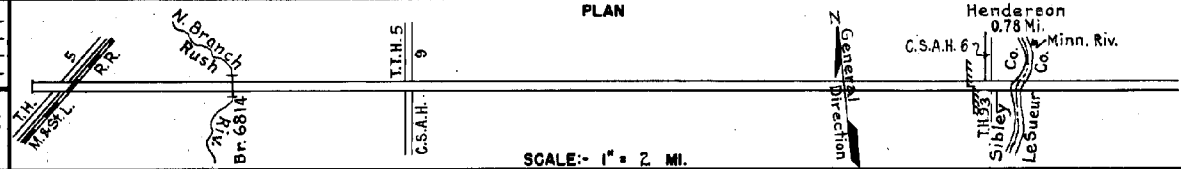
(1) Built as T.H. 22 and turned back to City in 1931; Returned to T.H. System in 1934. (2) Built as T.H. 22 in 1930, transferred to city in 1931; Returned to T.H. System in 1939 as T.H. 19.

PREPARED BY
HIGHWAY PLANNING SURVEY
IN COOPERATION WITH
U.S. PUBLIC ROADS ADMINISTRATION

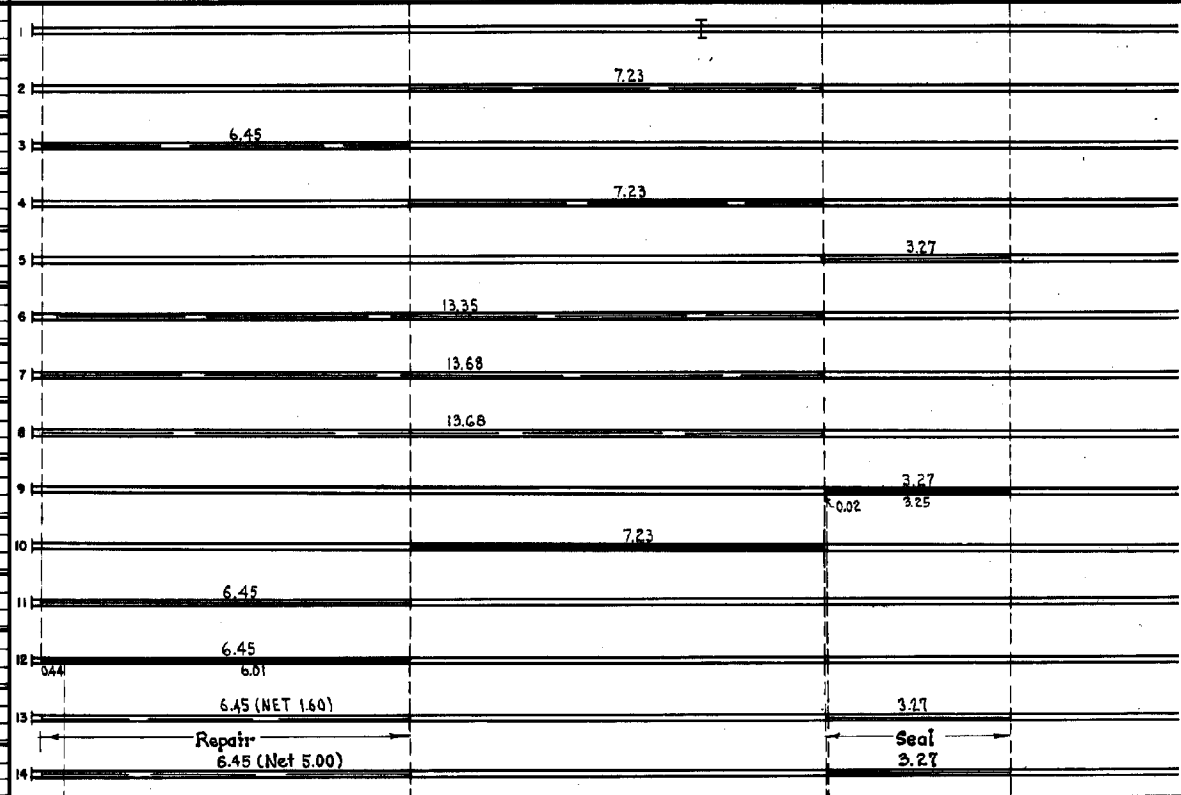
STATE OF MINNESOTA
DEPARTMENT OF HIGHWAYS
ROAD LIFE STUDIES
CONSTRUCTION PROJECT LOG RECORD

CONTROL SECTION 7206
TRUNK HIGHWAY 19
COUNTY Sibley
DISTRICT 7A

LIMITS: E. Jct. T.H. 5 — W. end of Bridge (Minn. River) in Henderson



YEAR BUILT	PROJECT NO.	DESCRIPTION			CODE NO.
		TYPE	WIDTH	THICKNESS	
C 1939		Br. 407	27'		
M 1940	A.F.E. 32	Spot Treat. Bit. Surf. Repair			
M 1941	A.F.E. 18	Spot Treat. Bit. Surf. Repair	26'		
M 1941	A.F.E. 17	Spot Treat. Bit. Surf. Repair			
M 1941	A.F.E. 7	Bit. Seal Coat	27'		
M 1942	A.F.E. 12	Spot Treat. Bit. Seal Coat			
M 1942	A.F.E. 4	Spot Treat. Bit. Surf. Repair			
M 1943	A.F.E. 4	Spot Treat. Bit. Surf. Repair			
C 1944	7206-12	Subgr. Corr. (Spots) Grav. Base Mixed Bit.	26' 26 1/2'	6" 1 1/2"	
C 1944	A.F.E. 6	Revert Bit. Surf. to Grave			
M 1944	A.F.E. 4	Bit. Surf. Repair	24'		
C 1945	A.F.E. 18	Bit. Resurfacing Mixed Bit.	24'	1" added	
M 1946	A.F.E. 4	Spot Treat. Bit. Surf. Repair	24'		
M 1947	A.F.E. 4 A.F.E. 5	Spot Treat. Bit. Surf. Repair Bit. Seal Coat	27' 27'		



YEARS		TOTAL MILES	UNINCORPORATED		INCORPORATED		RURAL		URBAN	
FROM	TO		RDWY. MI.	BR. MI.	RDWY. MI.	BR. MI.	RDWY. MI.	BR. MI.	RDWY. MI.	BR. MI.

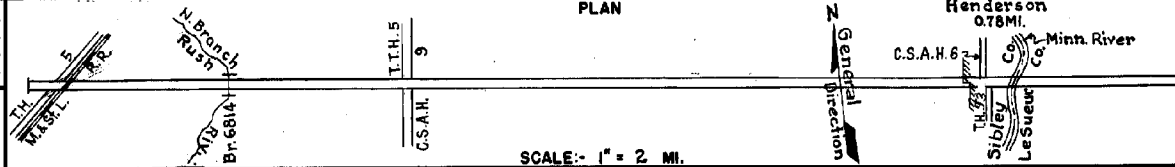
REMARKS: See Sheet No. 1

PREPARED BY
HIGHWAY PLANNING SURVEY
IN COOPERATION WITH
U. S. PUBLIC ROADS ADMINISTRATION

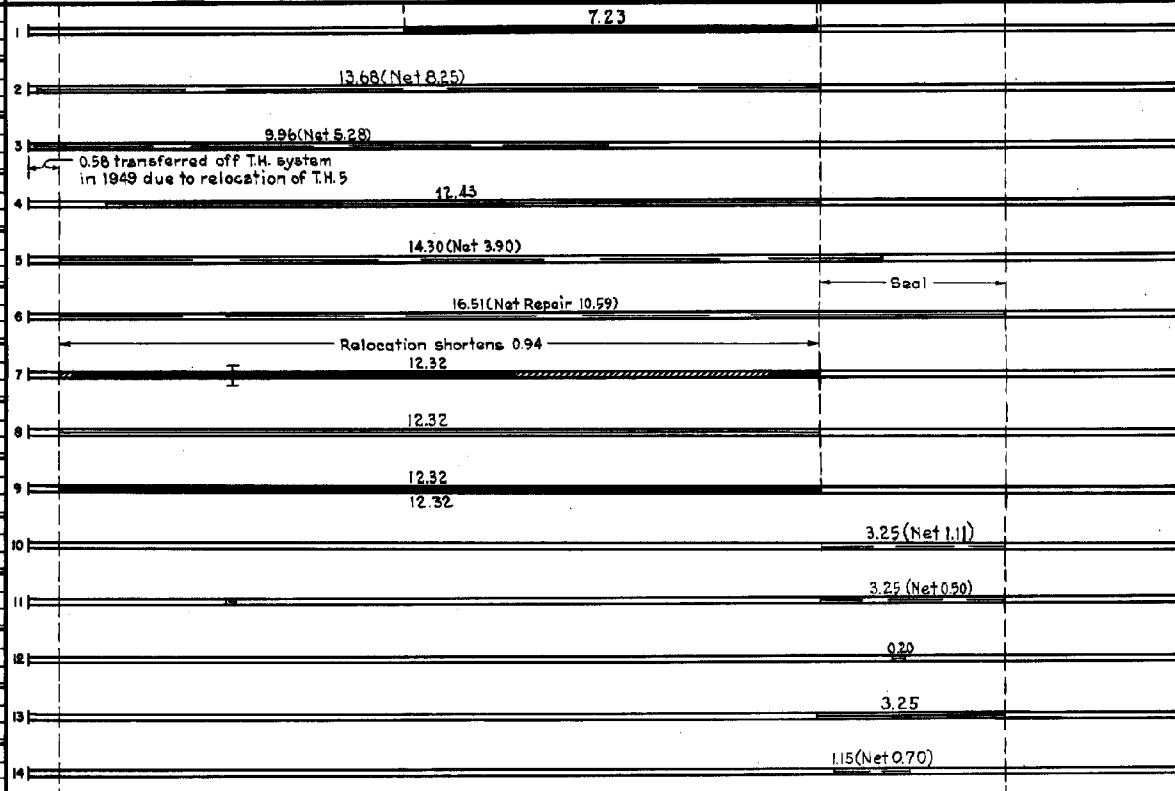
STATE OF MINNESOTA
DEPARTMENT OF HIGHWAYS
ROAD LIFE STUDIES
CONSTRUCTION PROJECT LOG RECORD

CONTROL SECTION 7206
TRUNK HIGHWAY 19
COUNTY Sibley
DISTRICT 7A

LIMITS: E. Jct. T.H. 5 - W. end of Bridge (Minn. River) in Henderson



YEAR BUILT	PROJECT NO.	DESCRIPTION			CODE NO.
		TYPE	WIDTH	THICKNESS	
C	1947 A.F.E. 19	Bit. Surfacing Bit. Surf. Treat.	22'	6"	SC-3,56288 Gal. Agg. 4267 Tons
M	1948 A.F.E. 4	Spot Treat. Bit. Surf. Repair	22'		SC3&MC3, 47506 Gal. Agg. 855 C.Y.
M	1949 A.F.E. 4	Spot Treat. Bit. Surf. Repair	24'		SC3&MC3, 18185 Gal. Agg. 50 C.Y.
M	1950 A.F.E. 4	Bit. Surf. Repair	22'		MC3&SC3, 70374 Gal. Agg. 3781 C.Y.
M	1951 A.F.E. 4	Spot Treat. Bit. Surf. Repair	22'		MC3&SC3, 15820 Gal. Agg. 700 C.Y.
M	1952 A.F.E. 4 A.F.E. 5	Spot Treat. Bit. Surf. Repair Light Bit. Seal (325 MI)	22'		Bit. 50825 Gal. Agg. 5558 C.Y.
C	1952 7206-14 7206-15	Grading Salvaged Bit. Br. 8814	36' 30' 30'	8" 4" 3"	30' B.S.
M	1953 A.F.E. 606	Grav. Resurfacing			1572 Tons
C	1954 7206-16	Sand-Grav. Subbase Bit. Stab. Base Plant Mix Bit.	30' 30' 24'	8" 4" 2"	
M	1955 A.F.E. 604	Spot Treat. Bit. Surf. Repair	24'		SC-3, 8677 Gal. Agg. 742 Tons
M&C	1956 A.F.E. 604 A.F.E. 825	Spot Treat. Bit. Surf. Repair Rip-Rap (M Br. 6814)	26'		MC3, 5428 Gal. Agg. 406 Tons
M	1958 A.F.E. 604	Bit. Surf. Repair	24'		MC-3, 2110 Gal. Agg. 147 Tons
M	1959 A.F.E. 605	Light Bit. Seal	24'		RC-2, 665 Gal. Agg. 250 C.Y.
M	1960	Spot Treat. Bit. Surf. Repair			MC-3, 6428 Gal. Agg. 524 Tons



YEARS FROM	TOTAL TO	UNINCORPORATED		INCORPORATED		RURAL		URBAN	
		RDWY. MI.	BR. MI.	RDWY. MI.	BR. MI.	RDWY. MI.	BR. MI.	RDWY. MI.	BR. MI.

REMARKS: See Sheet No 1

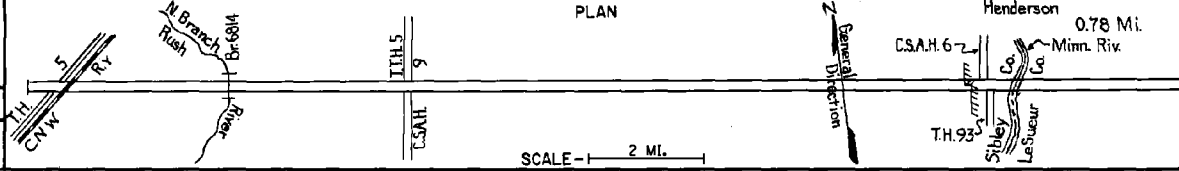
475

PREPARED BY
TRAFFIC AND PLANNING DIVISION
IN COOPERATION WITH
U.S. DEPARTMENT OF COMMERCE
BUREAU OF PUBLIC ROADS

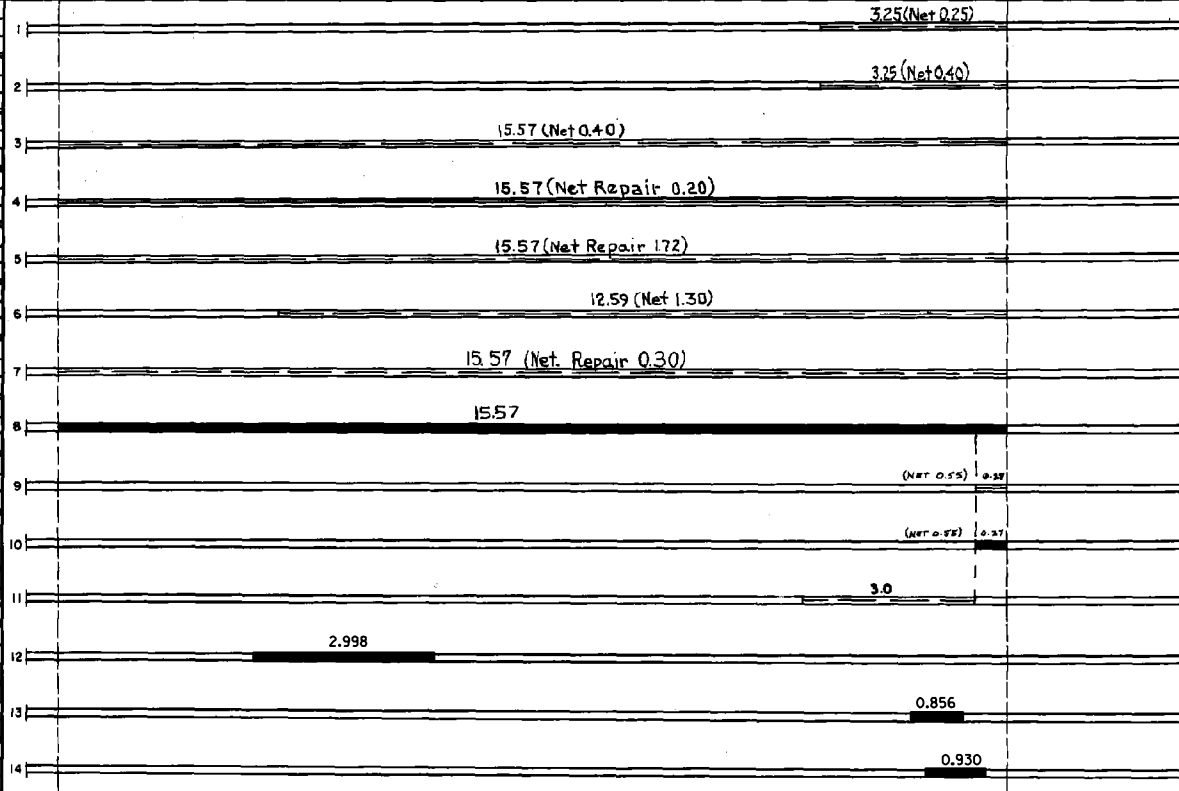
STATE OF MINNESOTA
DEPARTMENT OF HIGHWAYS
ROAD LIFE STUDIES
CONSTRUCTION PROJECT LOG RECORD

CONTROL SECTION 7206
TRUNK HIGHWAY 19
COUNTY Sibley
DISTRICT 7A

LIMITS: E. Jct. T.H. 5 - W. end of Bridge (Minn. River) in Henderson
Ref. Pt. 118+00.772 - 134+00.348



YEAR BUILT	PROJECT NO.	DESCRIPTION	WIDTH	THICKNESS	REMARKS
M 1961		Spot Treat Bit Surf. Repair	24'		Plant Mix 139 Tons MC-3, 100 Gal. for tack
M 1962		Spot Treat Bit Surf. Repair	24'		Bit Mix 172 Tons Tack MC-3, 390 Gal.
M 1963	SF	Spot Treat Bit Surf. Repair	24'		Plant mix 79 Tons & 1750 Gal. MC-3 Rd mix
M 1964	C	Light Bit Seal	25'		RS-2K 26664 Gal. Agg. 1064 c.y.
M 1968	SF	Bit Surf. Repair	24'	3/4"	Bit Mix 141 Tons MC-250 Tack 500 Gal. Agg. 770 Tons
M 1971	SF	Spot Treat Bit Surf. Repair	24'	1/2"	MC-250 Tack 390 Gal. Agg. 486 Ton
M 1972	SF	Spot Bit Repair	24'	1"	MC-250 400 Gal. Agg. 296 Ton
C 1973	7206-20	Bit Overlay	24'	2 1/2"	
M 1978	SF	GRAVEL SHOULDER	3'	2-4"	604 Cu. Yds
M 1978	SF	Bit Surf. Overlay	22'	3-3"	Pl. Mix 4302 Tons RC 250 Tack 1000 Gal.
M 1985	SF	Bit Surfacing Agg. Shoulders	24' 3'	1 1/4" 1 3/4"	Sp. 2341 Sp. 2221
M 1990	SF	Bit. Overlay	24'	2"	Spec. 2341
M 1990	SF	Bit. Overlay	24'	2"	Spec. 2341
M 1990	SF	Bit. Overlay	24'	2"	Spec. 2341



YEARS		TOTAL MILES	UNINCORPORATED		INCORPORATED		RURAL		URBAN	
FROM	TO		RDWY. MI.	BR. MI.	RDWY. MI.	BR. MI.	RDWY. MI.	BR. MI.	RDWY. MI.	BR. MI.

REMARKS: See Sheet No. 1

