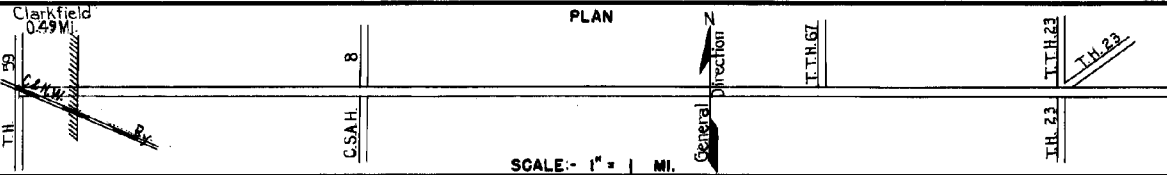


PREPARED BY
HIGHWAY PLANNING SURVEY
IN COOPERATION WITH
U.S. PUBLIC ROADS ADMINISTRATION

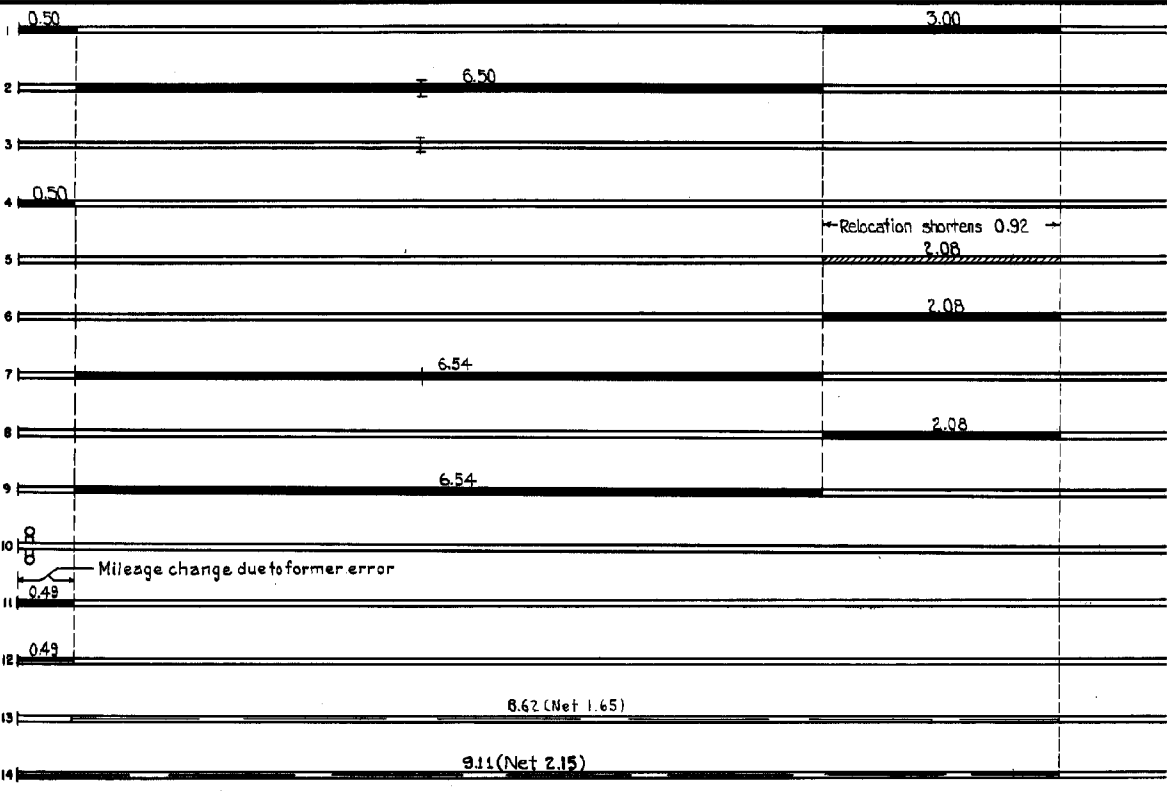
STATE OF MINNESOTA
DEPARTMENT OF HIGHWAYS
ROAD LIFE STUDIES
CONSTRUCTION PROJECT LOG RECORD

CONTROL SECTION 8706
TRUNK HIGHWAY 67
COUNTY Yellow Medicine
DISTRICT 88

LIMITS: Jct. T.H. 59 in Clarkfield - W. Jct. T.H. 23



YEAR BUILT	PROJECT N°	DESCRIPTION			CODE N°
		TYPE	WIDTH	THICKNESS	
		Gravel	26'	2"	No Record of Constr.
		Gravel	26'	3"	No Record of Constr. 31' Pile Trestle
1925		Br. M-501	24'		30' B.S. Maint. Dept.
1931		Oil Tr. Gravel	26'	1"	Maint. Dept.
1931	67-46-23	Grading Gravel	32' 24'	3" 2 3/4"	1500 C.Y./Mile.
1932	(1) 67-46-23	Oil Tr. Gravel	20'	1"	Maint. Dept.
1937	67-48-24-1	Grad. CaCl ₂ Stab. Agg. Base. Bit. Surf. Tr. Br. 3957	33 3/4' 32'	6" 1/4"	(2) W1010.
1938	67-48-23 8706-01	Stab. Agg. Base Mixed Bitum.	32' 26'	3" 1 1/4"	
1938	8706-02	Mixed Bitum.	26'	1 1/2"	(3)
C	1940 8706-04	Crossing Signal			
C	1941 8706-05	Grad. Curb. & S. Walk Mixed Bitum. Grav. Base	46' 46'	1" 6 1/2"	
M	1942 A.F.E. 5	Bit. Seal Coat	46'		Tar RT-10-8433 Gal./Mi. Grav. 278 C.Y./Mi. Maint. Dept.
M	1946 A.F.E. 4	Spot Treat. Bit. Surf. Repair			MC-3, 10391 Gal. Agg. 576 C.Y.
M	1947 A.F.E. 4	Spot Treat. Bit. Surf. Repair			MC-3, 19012 Gal. Agg. 1106 tons



YEARS		TOTAL	UNINCORPORATED		INCORPORATED		RURAL		URBAN	
FROM	TO	MILES	RDWY. MI.	BR. MI.	RDWY. MI.	BR. MI.	RDWY. MI.	BR. MI.	RDWY. MI.	BR. MI.
192	1930	10.00	9.49	0.01	0.50	0.00	9.99	0.01	0.00	0.00
193	1936	9.08	8.57	0.01	0.50	0.00	9.07	0.01	0.00	0.00
1937	1940	9.12	8.62	0.00	0.50	0.00	9.12	0.00	0.00	0.00
1941	1950	9.11	8.62	0.00	0.49	0.00	9.11	0.00	0.00	0.00
1951		9.11	8.62	0.00	0.49	0.00	8.62	0.00	0.49	0.00

REMARKS: Layout is to scale as of 1931.

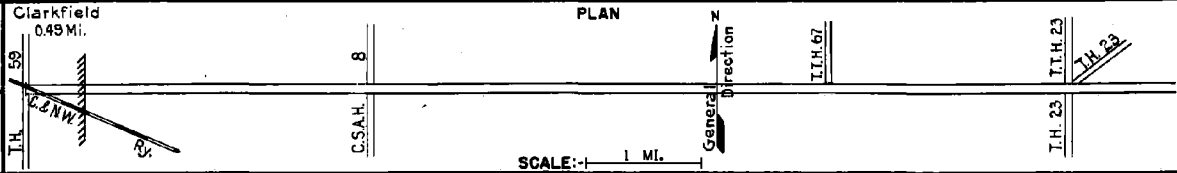
(1) This work not done under this project number but lies within the limits of this project. (2) Top 2" stabilized. (3) Accumulated thickness.

PREPARED BY
HIGHWAY PLANNING SURVEY
IN COOPERATION WITH
U. S. PUBLIC ROADS ADMINISTRATION

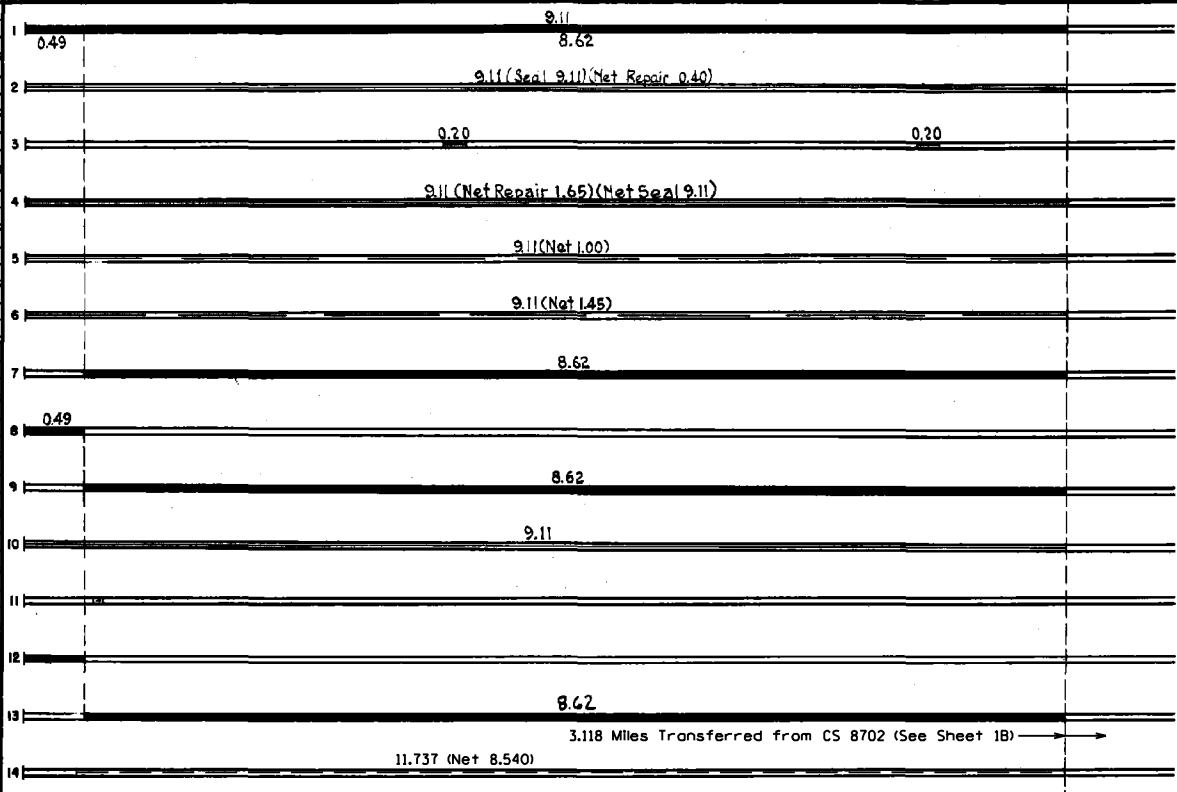
STATE OF MINNESOTA
DEPARTMENT OF HIGHWAYS
ROAD LIFE STUDIES
CONSTRUCTION PROJECT LOG RECORD

CONTROL SECTION 8706
TRUNK HIGHWAY 87
COUNTY Yellow Medicine
DISTRICT 8B

LIMITS: Jct. T.H. 59 in Clarkfield - W. Jct. T.H. 23
Ref. Pt. 019+00.039 - 028+00.092



YEAR BUILT	PROJECT N°	DESCRIPTION			CODE N°
		TYPE	WIDTH	THICKNESS	
C	1948 A.F.E. 23	Spot Base Repair Bit. Resurfacing Mixed Bit.	26'	1"	MC283, 99134 Gal. Agg. 6430 Tons Added thickness
M	1950 A.F.E. 4	Spot Treat. Bit. Surf. Repair Bit. Fog Seal	24'	2 1/2"	Bit. 11179 Gal. Agg. 209 Tons Agg. 425 C.Y.
M	1951 A.F.E. 4	Bit. Surf. Repair	24'		SC3, 2494 Gal. Agg. 164 C.Y.
M	1952 A.F.E. 4 A.F.E. 5	Spot treat. Bit. Surf. Repair Light Bit. Seal	24'	2 1/2"	SC3 & AERS-1, 28873 Gal. Agg. 1164 C.Y.
M	1953 A.F.E. 604	Spot Treat. Bit. Surf. Repair	24'		SC3, 8310 Gal. Agg. 703 Tons
M	1954 A.F.E. 604	Spot Treat. Bit. Surf. Repair	24'		SC3, 11181 Gal. Agg. 841 Tons
C	1955 8706-11 (4) A.F.E. 819 (5)	Grading Gravel Mixed Bit. (Base)	34' 34' 26'	12" 3 1/2" 1 1/2"	0m 0' 12 Sand-Gr. Subbase
C	1957 8706-12	Grav. Sub-base Bit. Stab. Base Plant Mix Bit.	50'	12" 6" 3"	includes 8" salvaged material
C	1957 8706-12	Plant Mix Bit.	24'	2"	
M	1958 A.F.E. 605	Bit. Seal Coat	24'		RC-5 & RT-10, 33119 Gal. Agg. 1095 C.Y.
M	1963 SF	(Service Lane) Bit. Stab. Base Mixed Bit.	24'	9" 2 1/2"	Base, 480 Tons MC-3, 2812 Gal. Bit. Mix, 148 Tons
C	1974 -13	Pl. Mix Bit. Surf.	50'	1 1/2"	
C	1974 -14	Pl. Mix Bit. Surf. Gravel Shldr's.	24'	1 1/2" 5'	
M	1986 SF	Spot Overlay			



YEARS		TOTAL MILES	UNINCORPORATED		INCORPORATED		RURAL		URBAN	
FROM	TO		RDWY. MI.	BR. MI.	RDWY. MI.	BR. MI.	RDWY. MI.	BR. MI.	RDWY. MI.	BR. MI.

REMARKS: See Sheet No. 1
(4) Contract not final but work substantially complete (5) A.F.E. 819 covers const. of portable culvert & tile at Mi. Pt. 4.34.

