



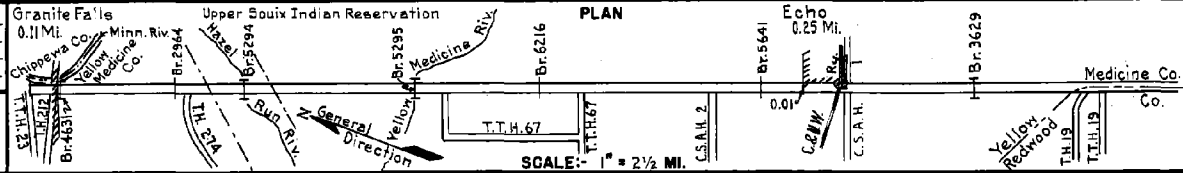


PREPARED BY  
HIGHWAY PLANNING SURVEY  
IN COOPERATION WITH  
U.S. PUBLIC ROADS ADMINISTRATION

STATE OF MINNESOTA  
DEPARTMENT OF HIGHWAYS  
ROAD LIFE STUDIES  
CONSTRUCTION PROJECT LOG RECORD

CONTROL SECTION 8707  
TRUNK HIGHWAY 67  
COUNTY Yellow Medicine  
DISTRICT 8B

LIMITS: Jct. T.H. 212 in Granite Falls - S. Co. Line (Jct. T.H. 19)



YEAR BUILT	PROJECT N°	DESCRIPTION		REMARKS	CODE N°	PLAN	
		TYPE	WIDTH THICKNESS				
M 1945	A.F.E. 6	Grav. Resurfacing		604 C.Y./Mi. Maint. Div.		1	5.71
M 1945	A.F.E. 5	Patching & Bit. Seal Coat (Spots)		MG28RG3 1639 G./Mi. Grav. 58 C.Y./Mi. Maint. Div.		2	11.51 5.37
M 1946	A.F.E. 4	Spot Treat. Bit. Surf. Repair	24'	SC3:MC2:3 41292 Gal. Agg. 2225 C.Y.		3	11.51 (Net 2.10) 5.37 (Net 2.35)
C 1946	A.F.E. 22	Gravel Base	4"	13792 C.Y.		4	5.71
M 1947	A.F.E. 4	Spot Treat. Bit. Surf. Repair	24'	MC3 30371 Gal. Agg. 1827 Tons		5	11.51 16.88 (Net 4.15) 5.37
C 1947	A.F.E. 16	Bit. Surfacing Bit. Surf. Treat. (Mixed Prime)	24'	MC3 1.72570 Gal. Agg. 3249 Tons		6	5.71
M 1948	A.F.E. 4	Spot Treat. Bit. Surf. Repair	24'	MC3 27465 Gal. Agg. 1965 Tons		7	19.49 (Net 3.94)
M 1949	A.F.E. 4	Spot Treat. Bit. Surf. Repair & Fog Seal	24'	Bit. 36578 Gal. Agg. 1785 Tons		8	7.20 (Net Repair 2.85) 11.08 (Fog Seal)
C 1950	A.F.E. 22	Sand Gravel Base Bit. Surfacing Mixed Bit.	28' 0" 4" 24' 1"	Bit. 101990 Gal. Agg. 4394 Tons		9	5.37 5.16 0.21
M 1950	A.F.E. 4	Spot Treat. Bit. Surf. Repair	24'	SC3 10059 Gal. Agg. 739 Tons		10	6.72 (Net 1.72)
M 1951	A.F.E. 4	Spot Treat. Bit. Surf. Repair & Fog Seal (5.37 Mi.)	24'	Bit. 13963 Gal. Agg. 404 C.Y.		11	17.22 (Repair-Net 1.50) 5.37
C 1951	A.F.E. 16	Spot Subgr. Base Corr. Bit. Resurfacing Mixed Bit.	24'	MC3 123266 Gal. Agg. 6138 Tons added thickness		12	11.51
C 1952	A.F.E. 19	Spot Base Repair Bit. Resurfacing Mixed Bit.	24' 1" Added	SC3 59035 Gal. Agg. 4221 Tons		13	5.71
M 1952	A.F.E. 4 A.F.E. 5	Spot Treat. Bit. Surf. Repair Light Bit. Seal (Spots)	24'	MC2:MAERS 1.24289 Gal. Agg. 1023 C.Y.		14	11.51 (Net Repair 0.05) (Net Seal 10.83) 0.22

YEARS FROM	TOTAL MILES TO	UNINCORPORATED		INCORPORATED		RURAL		URBAN	
		RDWY. MI.	BR. MI.	RDWY. MI.	BR. MI.	RDWY. MI.	BR. MI.	RDWY. MI.	BR. MI.

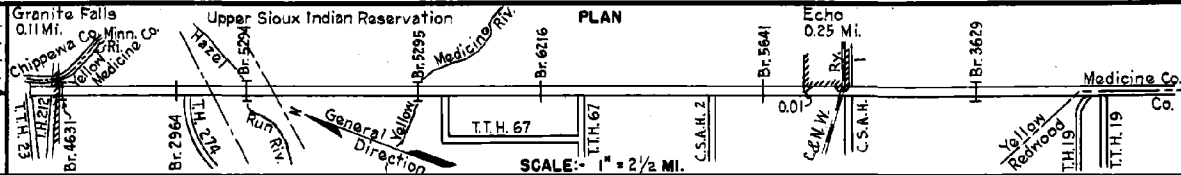
REMARKS: See Sheet N°1

PREPARED BY  
HIGHWAY PLANNING SURVEY  
IN COOPERATION WITH  
U.S. PUBLIC ROADS ADMINISTRATION

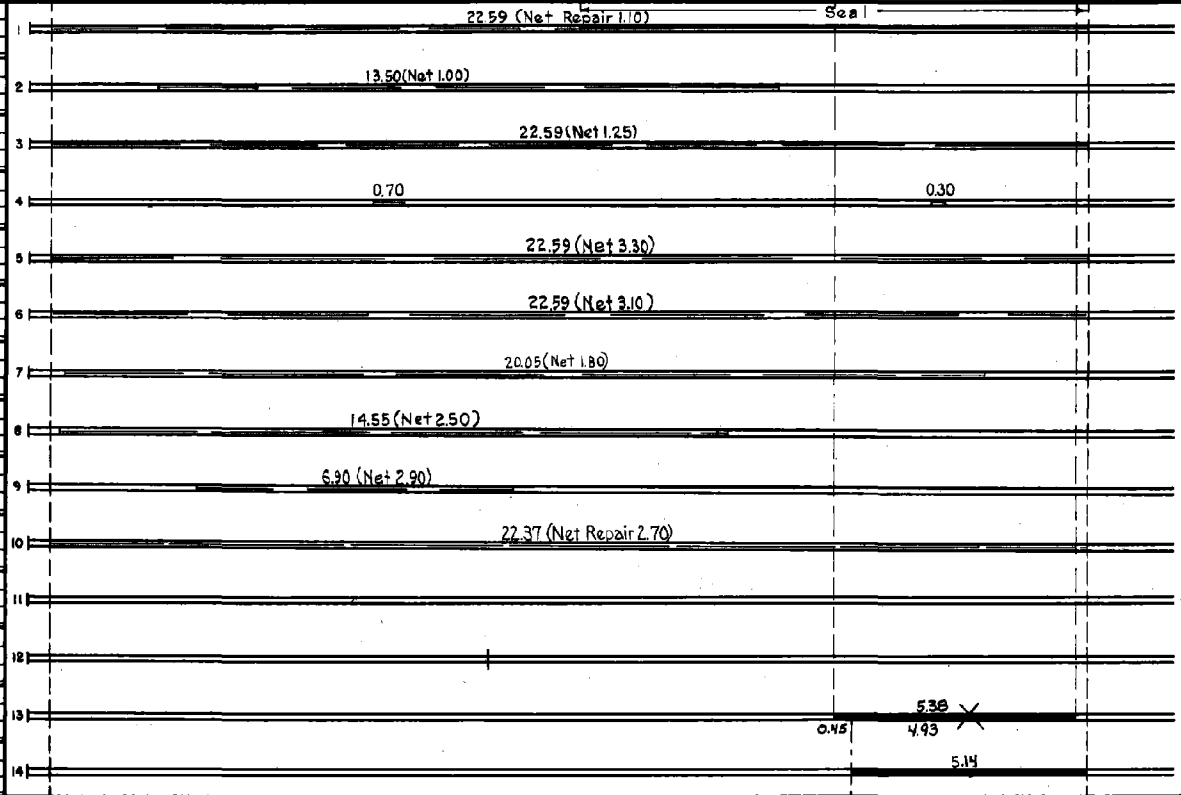
STATE OF MINNESOTA  
DEPARTMENT OF HIGHWAYS  
ROAD LIFE STUDIES  
CONSTRUCTION PROJECT LOG RECORD

CONTROL SECTION 8707  
TRUNK HIGHWAY 67  
COUNTY Yellow Medicine  
DISTRICT 8B

LIMITS: Jct. T.H. 212 in Granite Falls - S. Co. Line (Jct. T.H. 19)



YEAR BUILT	PROJECT N°	DESCRIPTION		REMARKS	CODE N°
		TYPE	WIDTH THICKNESS		
M	1953 A.F.E. 604	Spot Treat.		Bit. 29471 Gal.	
	A.F.E. 605	Bit Surf. Repair	24'	Agg. 1771 Tons	
	A.F.E. 605	Light Bit Seal (108 MI.)			
M	1954 A.F.E. 604	Spot Treat.		SC3&MC2, 11158 Gal.	
	A.F.E. 604	Bit. Surf. Repair	24'	Agg. 784 Tons	
M	1955 A.F.E. 604	Spot Treat.		SC3&MC2, 10043 Gal.	
	A.F.E. 604	Bit. Surf. Repair	24'	Agg. 700 Tons	
M	1956 A.F.E. 604	Spot Treat.		SC3&MC2, 11394 Gal.	
	A.F.E. 604	Bit. Surf. Repair	24'	Agg. 744 Tons	
M	1957 A.F.E. 604	Spot Treat.		SC-3, 23058 Gal.	
	A.F.E. 604	Bit. Surf. Repair	24'	Agg. 1772 Tons	
M	1958 A.F.E. 604	Spot Treat.		SC-3, 20261 Gal.	
	A.F.E. 604	Bit. Surf. Repair	24'	Agg. 1547	
M	1959 A.F.E. 604	Spot Treat.		SC-3&MC-2, 11329 Gal.	
	A.F.E. 604	Bit. Surf. Repair	24'	Agg. 833 Tons	
M	1960	Spot Treat.		SC-3&MC-2, 18578 Gal.	
		Bit. Surf. Repair	24'	Agg. 1149 Tons	
M	1961	Spot Treat.		SC3&MC2, 13981 Gal.	
		Bit. Surf. Repair	24'	for Repair & 2439 Gal. for Tack	
M	1962	Spot Treat.		Rd. Mix. 674 Tons	
		Bit. Surf. Repair	24'	SC-3, Tack, 1823 Gal.	
C	1966	Br. 5295		Raise Portals to 16' Vert. Clearance at Yellow Med. River	
M	1967 SF	Replace 48" Metal Culv.	72'	72" of 48" M.C. Culvert	
C	1970 8707-19	Grade Gravel Base		Remove Br. 3629	
		Pl. Mix Bit. Surf.	24'	Replace with 66" x 154" R.C.P. Culv.	
C	1973 8707-21	Bit. Overlay	24'		
		Gravel Shders.	2"		



YEARS FROM	TOTAL MILES TO	UNINCORPORATED		INCORPORATED		RURAL		URBAN		REMARKS: See Sheet No. 1
		RDWY. MI.	BR. MI.	RDWY. MI.	BR. MI.	RDWY. MI.	BR. MI.	RDWY. MI.	BR. MI.	

11-74



