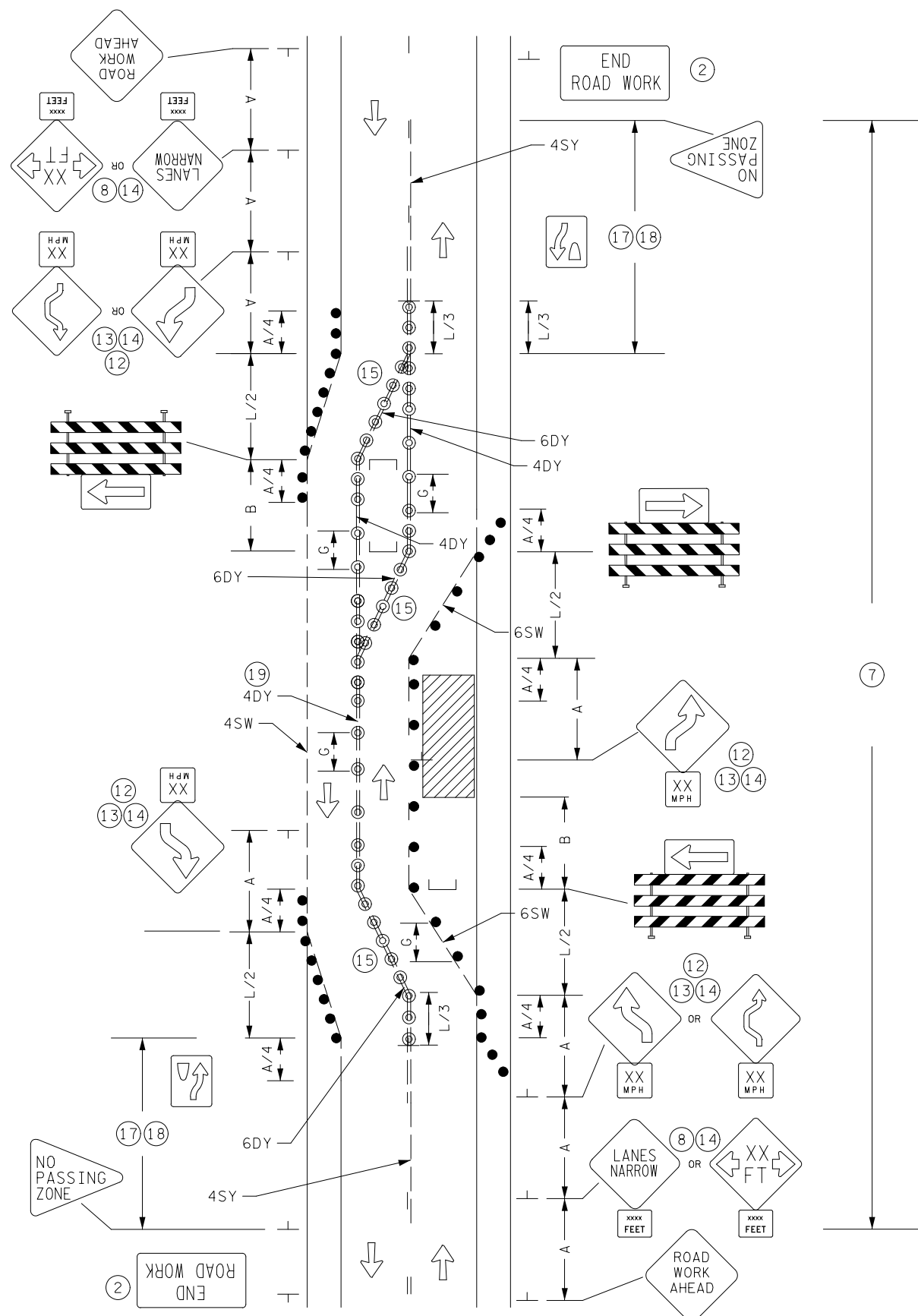


NOT TO SCALE



WORK SPACE OCCUPIES ONE HALF OF ROAD
TWO-LANE TWO-WAY ROAD

POSTED SPEED LIMIT PRIOR TO WORK STARTING (MPH)	SPACING OF CHANNELIZING DEVICES (G) FEET	SPACING OF ADVANCE WARNING SIGNS (A) FEET	DECISION SIGHT DISTANCE FEET	TAPER LENGTH (L) FEET	SHIFTING TAPER (L/2) FEET	TYPICAL SHOULDER TAPER (L/3) FEET	BUFFER SPACE (B) FEET
0 - 30	25	100	550	200	100	75	200
35 - 40		325	700	325	175	125	305
45 - 50	50	600	900	600	300	200	425
55		750	1200	700	350	250	500
60 - 65		1000	1400	800	400	275	650
70 - 75		1200	1600	900	450	300	820

ALL DISTANCES BASED ON 12 FT LANE WIDTHS.

DESIGNER NOTES:

TYPICAL APPLICATION FOR REFERENCE ONLY, NOT TO BE INSERTED INTO PLAN.

1. INSERT SPACING CHART DISTANCES INTO LAYOUTS.
- ② DETERMINE IF "END ROAD WORK" SIGNS ARE NEEDED.
3. DETERMINE IF FLASHERS ARE TO BE USED FOR NIGHT WORK.
4. LIST ALL CONFLICTING INPLACE SIGNING THAT MUST BE MODIFIED, COVERED, AND/OR REMOVED. INCLUDE SIGN MODIFICATIONS, COVERS AND/OR REMOVALS IN THE TRAFFIC CONTROL PLAN.
5. FOR ANY EXCAVATION OR DROP-OFF IN EXCESS OF 12 IN., SEE THE MINNESOTA DEPARTMENT OF TRANSPORTATION "TEMPORARY BARRIER GUIDANCE MANUAL".
6. ALL TEMPORARY PAVEMENT MARKINGS SHALL BE A WET REFLECTIVE MATERIAL.
- ⑦ MASK OR REMOVE ALL CONFLICTING PAVEMENT MARKINGS. DETERMINE QUANTITY OF MARKINGS TO BE MASKED OR REMOVED FOR PAY ITEM QUANTITIES.
- ⑧ THE MINIMUM LANE WIDTHS SHALL BE AT LEAST 10' OF DRIVEABLE SURFACE. WHEN TEMPORARY LANES WIDTHS ARE LESS THAN EXISTING LANE WIDTHS THE "LANES NARROW" OR A NARROW LANE WIDTH SIGN WITH ADVISORY PLAQUE.
9. LIST ALL CONFLICTING INPLACE SIGNING THAT MUST BE MODIFIED, COVERED, AND/OR REMOVED. INCLUDE SIGN MODIFICATIONS, COVERS AND/OR REMOVALS IN THE TRAFFIC CONTROL PLAN.
10. PARKING AND STOPPING MAY BE PROHIBITED ALONG THE WORK SPACE AND TAPER. CONTACT THE APPROPRIATE ROAD AUTHORITY TO COORDINATE INSTALLATION OF NO PARKING SIGNS. NO PARKING SIGNS SHOULD BE INSTALLED 24 HOURS IN ADVANCE OF RESTRICTION. COVER ANY EXISTING/ CONFLICTING PARKING SIGNS.
11. IF PARKING LANE IS NORMALLY OPEN TO VEHICLE TRAFFIC DURING THE TIME OF DAY THIS CLOSURE WILL BE IN EFFECT, THE LANE SHALL BE CONSIDERED A TRAVELLED LANE AND NOT A PARKING LANE. THE APPROPRIATE LAYOUT SHALL THEN BE USED TO PROVIDE TRAFFIC CONTROL FOR THE LANE CLOSURE. REVERSE CURVE SIGN.
- ⑫ IF TANGENT LENGTH OF ACTIVITY AREA IS 600 FEET OR LESS, USE THE DOUBLE REVERSE CURVE SIGN.
- ⑬ SPEED ADVISORY PLAQUE SHOULD BE USED IF A SPEED REDUCTION OF GREATER THAN 10 MPH IS ANTICIPATED TO SAFELY NAVIGATE THE SHIFT.
- ⑭ WHEN USED, ADVISORY PLAQUES SHALL BE INSTALLED BELOW THE APPROPRIATE WARNING SIGNS, PLACED DIRECTLY BELOW OR TOWARD THE LOWER SIDE NEAREST TRAFFIC.
- ⑮ SPACING FOR SURFACE MOUNTED DELINEATORS ARE G/2 FOR 250 FT. BEFORE, AFTER AND THROUGH THE SHIFTING TAPERS.
- ⑰ NO PASSING ZONE FOR A MINIMUM OF 500FT. FROM BEGINNING OF TRANSITION.
- ⑱ IF THE DISTANCE FROM INPLACE "NO PASSING ZONE" IS LESS THAN THE FOLLOWING, THE ZONE SHALL BE CONTACTED WITH A SOLID YELLOW LINE.
35 MPH OR LESS - 500 FT.
40 - 45 MPH - 650 FT.
55 MPH OR GREATER - 800 FT.
- ⑲ MAY SUBSTITUTE 4" DY LINE WITH TEMPORARY RAISED PAVEMENT MARKERS, DOUBLE SIDED PLACED 4" APART AT 10' SPACING.

- DRUMS
- ⊙ SURFACE MOUNTED DELINEATOR
- — — TEMPORARY WET REFLECTIVE PAVEMENT MARKING.
- 4SY = 4 INCH SOLID LINE YELLOW WET REFLECTIVE
- 4SW = 4 INCH SOLID LINE WHITE WET REFLECTIVE
- 4DY = 4 INCH DOUBLE SOLID LINE YELLOW WET REFLECTIVE
- 6SW = 6 INCH SOLID LINE WHITE WET REFLECTIVE
- 6DY = 6 INCH DOUBLE SOLID LINE YELLOW WET REFLECTIVE