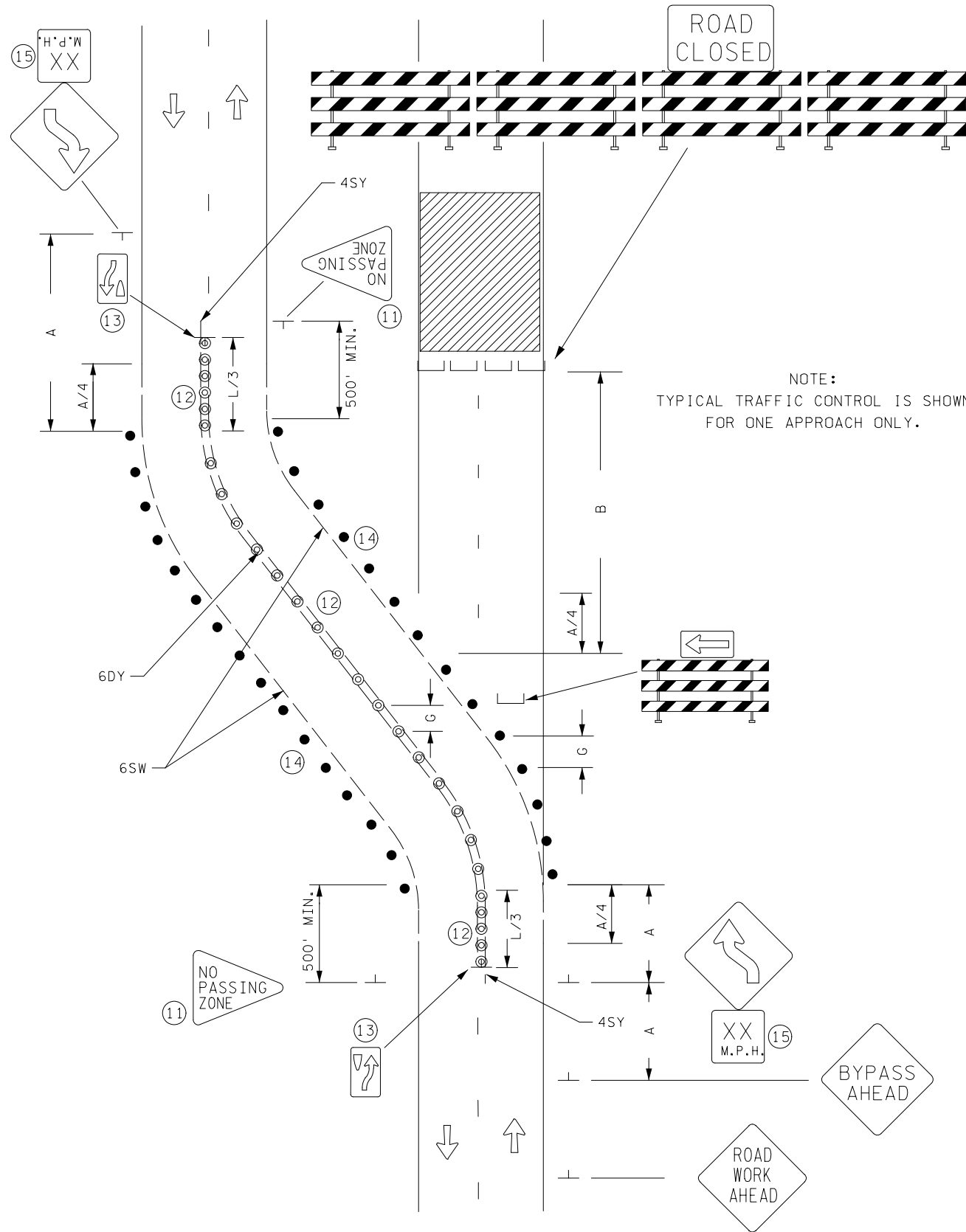


NOT TO SCALE



ROAD CLOSURE WITH DIVERSION (BYPASS)  
TWO-LANE, TWO-WAY ROAD

NOTE:  
TYPICAL TRAFFIC CONTROL IS SHOWN  
FOR ONE APPROACH ONLY.

POSTED SPEED LIMIT PRIOR TO WORK STARTING (MPH)	SPACING OF CHANNELIZING DEVICES (G) FEET	SPACING OF ADVANCE WARNING SIGNS (A) FEET	DECISION SIGHT DISTANCE FEET	TAPER LENGTH (L) FEET	SHIFTING TAPER (L/2) FEET	TYPICAL SHOULDER TAPER (L/3) FEET	BUFFER SPACE (B) FEET
0 - 30	25	100	550	200	100	75	200
35 - 40		325	700	325	175	125	305
45 - 50	50	600	900	600	300	200	425
55		750	1200	700	350	250	500
60 - 65		1000	1400	800	400	275	650
70 - 75		1200	1600	900	450	300	820

ALL DISTANCES BASED ON 12 FT LANE WIDTHS.

DESIGNER NOTES:

TYPICAL APPLICATION FOR REFERENCE ONLY, NOT TO BE INSERTED INTO PLAN.

- INSERT SPACING CHART DISTANCES INTO LAYOUTS.
- CONSIDER THE INSTALLATION OF A PCMS AND/OR G20-X2 OR SPECIAL SIGN, IF CONGESTION IS EXPECTED, IF ADVANCE SIGNING TO DIVERT TRAFFIC IS NEEDED OR OTHER CONDITIONS DETERMINED BY THE ENGINEER.
- INSTALL A PCMS AND/OR G20-X1 SIGN (MODIFIED) OR G20-X2 SIGN FOR SEVEN DAY ADVANCE WARNING OF RESTRICTION.
- FOR ANY EXCAVATION OR DROP-OFF IN EXCESS OF 12 IN, SEE THE MINNESOTA DEPARTMENT OF TRANSPORTATION "TEMPORARY BARRIER GUIDANCE MANUAL".
- ALL TEMPORARY PAVEMENT MARKINGS SHALL BE WET REFLECTIVE MATERIAL.
- MAY SUBSTITUTE 4" DY LINE WITH TEMPORARY RAISED PAVEMENT MARKERS, DOUBLE SIDED PLACED 4" APART AT 10' SPACING.
- MASK OR REMOVE ALL CONFLICTING PAVEMENT MARKINGS. DETERMINE QUANTITY OF MARKINGS TO BE MASKED OR REMOVED FOR PAY ITEM QUANTITIES.
- LIST ALL DIRECTIONAL SIGNING THAT MUST BE COVERED, REMOVED OR MODIFIED BECAUSE OF RESTRICTION.
- TYPICAL TRAFFIC CONTROL IS SHOWN FOR ONE APPROACH ONLY.
- THE MINIMUM LANE WIDTH SHOULD BE 11 FEET AND SHALL NOT BE LESS THAN 10 FEET. IF LANE WIDTH IS LESS THAN 11 FEET FURNISH AND INSTALL ADDITIONAL (REDUCED WIDTH) W20-X11 SIGNS.
- THE EXACT LOCATION OF NO PASSING ZONES IS TO BE DETERMINED BY THE ROAD AUTHORITY. IF THE DISTANCE FROM AN INPLACE "NO PASSING ZONE" IS LESS THAN THE FOLLOWING, THE ZONES SHALL BE CONNECTED WITH A SOLID YELLOW LINE:  
35 MPH OR LESS - 500'  
40 - 50 MPH - 600'  
55 MPH OR GREATER - 800'.
- OPTIONAL SURFACE MOUNTED DELINEATORS, G/2 SPACING FOR THE FIRST L/3 DISTANCE FROM THE BEGINNING OF BOTH ENDS OF THE BYPASS. G SPACING THROUGH THE REST OF THE BYPASS.
- OPTIONAL 12" x 18" KEEP RIGHT SIGN.
- SUPPLEMENTAL DELINEATION (SUCH AS CHEVRONS, DOWN ARROWS (W21-X3), ETC.) MAY BE REQUIRED ON THE BYPASS FOR ADDED ENHANCEMENT.
- WHEN USED, ADVISORY PLAQUES SHALL BE INSTALLED DIRECTLY BELOW OR ON THE LOWER SIDE NEAREST TRAFFIC SIDE OF SIGN(S).

4SY - 4 INCH SOLID LINE YELLOW WET REFLECTIVE  
6SW - 6 INCH SOLID LINE WHITE WET REFLECTIVE  
6DY - 6 INCH DOUBLE SOLID LINE YELLOW WET REFLECTIVE

- DRUMS, TYPE I OR TYPE II BARRICADE OR VERTICAL PANEL.
- ⊙ SURFACE MOUNTED DELINEATOR
- — — TEMPORARY WET REFLECTIVE PAVEMENT MARKING.