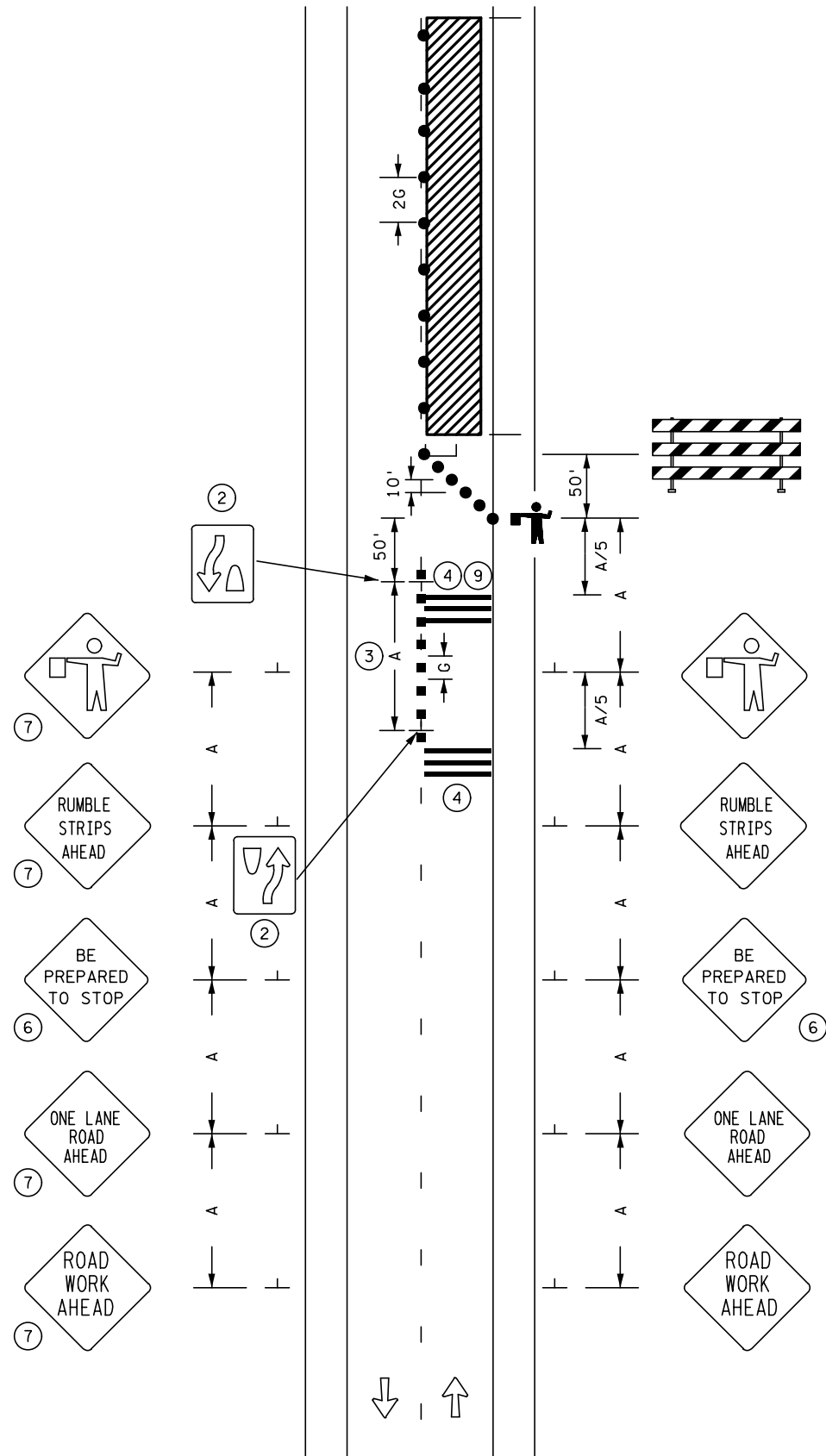


NOT TO SCALE



PORTABLE RUMBLE STRIPS IN ADVANCE OF FLAGGER

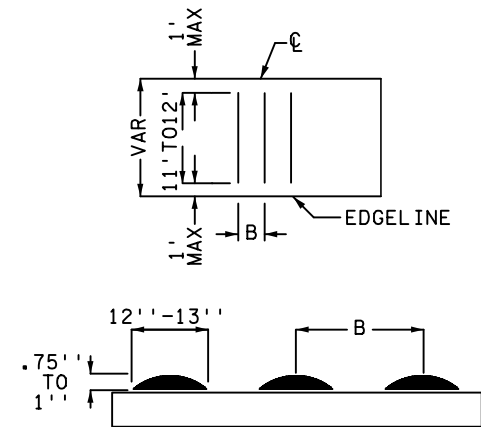
POSTED SPEED LIMIT PRIOR TO WORK STARTING (MPH)	SPACING OF CHANNELIZING DEVICES (G) FEET	SPACING OF ADVANCE WARNING SIGNS (A) FEET	DECISION SIGHT DISTANCE FEET	TAPER LENGTH (L) FEET	SHIFTING TAPER (L/2) FEET	TYPICAL SHOULDER TAPER (L/3) FEET	BUFFER SPACE (B) FEET
0 - 30	25	100	550	200	100	75	200
35 - 40		325	700	325	175	125	305
45 - 50	50	600	900	600	300	200	425
55		750	1200	700	350	250	500
60 - 65		1000	1400	800	400	275	650
70 - 75		1200	1600	900	450	300	820

DISTANCE 'L' BASED ON 12 FT LANE WIDTHS.

DESIGNER NOTES:

TYPICAL APPLICATION FOR REFERENCE ONLY, NOT TO BE INSERTED INTO PLAN.

1. INSERT SPACING CHART DISTANCES INTO LAYOUTS.
2. OPTIONAL 12'' X 18'' KEEP RIGHT SIGN MOUNTED ON TYPE ''A'' CHANNELIZERS.
3. TYPE ''A'' CHANNELIZER ON CENTERLINE REQUIRED WHEN OPTIONAL 12'' X 18'' KEEP RIGHT SIGNS ARE USED.
4. THE PORTABLE RUMBLE STRIP ARRAY SHOULD CONSIST OF 3 EQUALLY SPACED RUMBLE STRIPS, TABLE 1.
5. DESIGNER IS TO SPECIFY THE COLOR OF RUMBLE STRIPS TO BE USED; WHITE, BLACK, OR ORANGE.
6. ''BE PREPARED TO STOP'' SIGN OPTIONAL, WHEN NOT USED THE PORTABLE RUMBLE STRIPS ARRAY SHALL BE PLACED A/5 DISTANCE IN ADVANCE OF THE FLAGGER AHEAD SIGN.
7. OPTIONAL.
8. INCLUDE ''PORTABLE RUMBLE STRIPS'' PAY ITEM, QUANTITY AND SPECIAL PROVISIONS IN PLAN.
9. OPTIONAL SECOND SET OF ''PORTABLE RUMBLE STRIPS'' MAY BE USED FOR ADDED FLAGGER SAFETY. IF SECOND SET IS USED MODIFY SPECIAL PROVISIONS, PAY ITEM, AND QUANTITIES TO REFLECT ADDITIONAL SET(S).



- DRUMS
- TYPE ''A'' CHANNELIZER

TABLE 1

POSTED SPEED LIMIT PRIOR TO WORK STARTING	ADVANCE WARNING SIGN SPACING (''A'')	RUMBLE ON-CENTER SPACING (''B'')
0 - 30 MPH	100'	10'
35 - 40 MPH	325'	
45 - 50 MPH	600'	15'
55 MPH	750'	
60 - 65 MPH	1000'	20'
70 - 75 MPH	1200'	