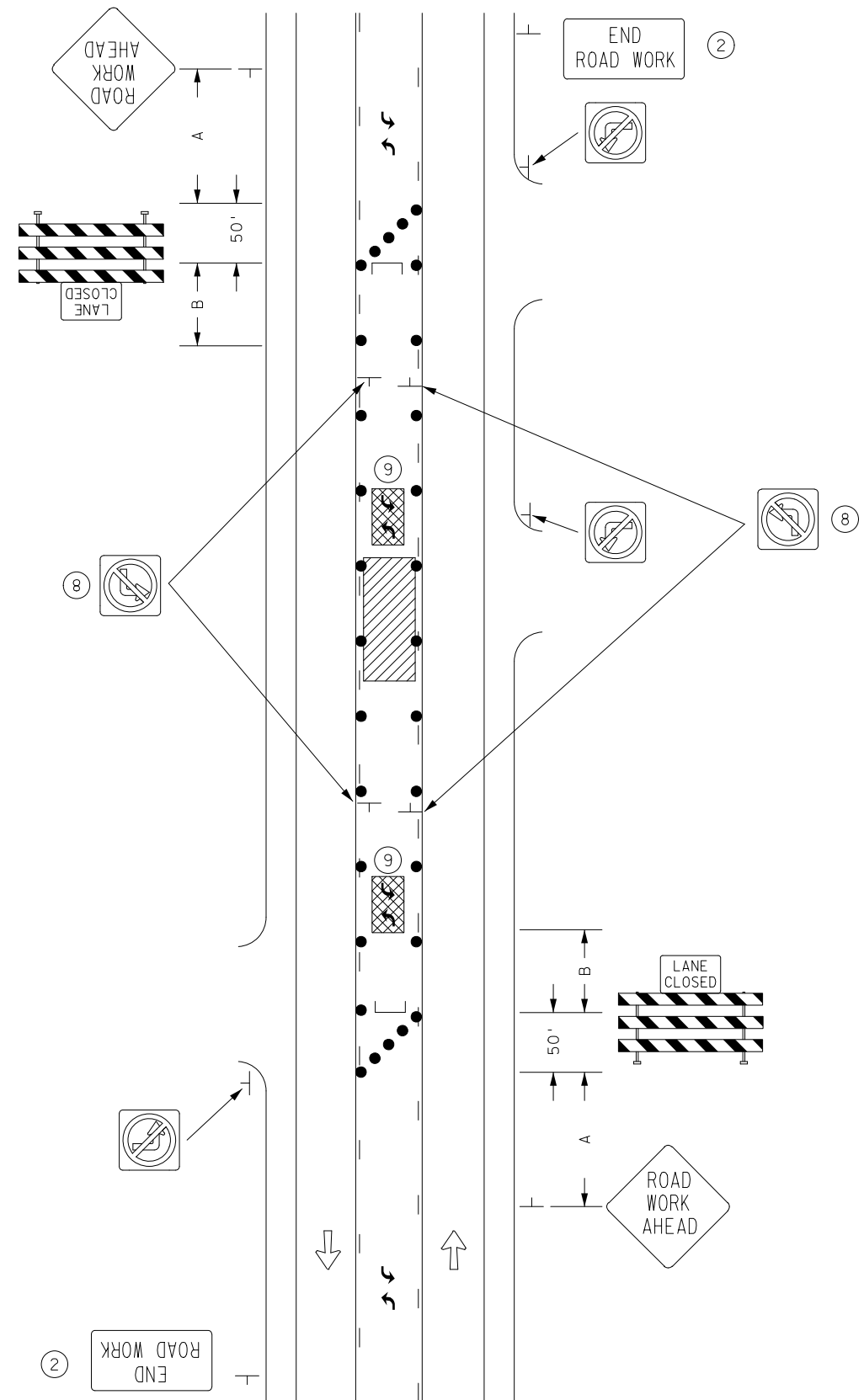


NOT TO SCALE



TURN LANE CLOSURE  
TWO-WAY CONTINUOUS LEFT TURN LANE

POSTED SPEED LIMIT PRIOR TO WORK STARTING (MPH)	SPACING OF CHANNELIZING DEVICES (G) FEET	SPACING OF ADVANCE WARNING SIGNS (A) FEET	DECISION SIGHT DISTANCE FEET	TAPER LENGTH (L) FEET	SHIFTING TAPER (L/2) FEET	TYPICAL SHOULDER TAPER (L/3) FEET	BUFFER SPACE (B) FEET
0 - 30	25	100	550	200	100	75	200
35 - 40		325	700	325	175	125	305
45 - 50	50	600	900	600	300	200	425
55		750	1200	700	350	250	500
60 - 65		1000	1400	800	400	275	650
70 - 75		1200	1600	900	450	300	820

ALL DISTANCES BASED ON 12 FT LANE WIDTHS.

DESIGNER NOTES:

TYPICAL APPLICATION FOR REFERENCE ONLY, NOT TO BE INSERTED INTO PLAN.

1. INSERT SPACING CHART DISTANCES INTO LAYOUTS.
2. DETERMINE IF "END ROAD WORK" SIGNS ARE NEEDED.
3. CONSIDER THE INSTALLATION OF A PCMS AND/OR G20-X2 OR SPECIAL SIGN IF CONGESTION IS EXPECTED, IF ADVANCE SIGNING TO DIVERT TRAFFIC IS NEEDED, OR OTHER CONDITIONS DETERMINED BY THE ENGINEER.
4. CONSIDER THE INSTALLATION OF A PCMS AND/OR G20-X1 SIGN (MODIFIED) OR G20-X2 SIGN FOR SEVEN DAY ADVANCE WARNING OF RESTRICTION.
5. FOR ANY EXCAVATION OR DROP-OFF IN EXCESS OF 12 IN., SEE THE MINNESOTA DEPARTMENT OF TRANSPORTATION "TEMPORARY BARRIER GUIDANCE MANUAL".
6. ALL TEMPORARY PAVEMENT MARKINGS SHALL BE A WET REFLECTIVE MATERIAL.
7. PARKING AND STOPPING MAY BE PROHIBITED ALONG THE WORK SPACE AND TAPER.
8. LEFT TURNING MOVEMENTS SHOULD BE PROHIBITED ALONG THE WORK SPACE AND TAPER. NO LEFT TURN SIGNS MAY BE USED THROUGH OUT THE WORK SPACE AND TAPER AS APPROPRIATE. REDUCE SPACING OF CHANNELIZING DEVICES AS NEEDED IN ORDER TO PREVENT TURNS.
9. MASK OR REMOVE ALL CONFLICTING PAVEMENT MARKINGS. DETERMINE QUANTITY OF MARKINGS TO BE MASKED OR REMOVED FOR PAY ITEM QUANTITIES.
10. LIST ALL CONFLICTING INPLACE SIGNING THAT MUST BE MODIFIED, COVERED, AND/OR REMOVED. INCLUDE SIGN MODIFICATIONS, COVERS AND/OR REMOVALS IN THE TRAFFIC CONTROL PLAN.
11. INSTALL A TYPE III BARRICADE AT THE BEGINNING OF EACH WORK SPACE AND AT INTERVALS FROM 500 FEET MINIMUM TO 1000 FEET MAXIMUM WITHIN THE CLOSED LANE.

● DRUMS.

— — — TEMPORARY WET REFLECTIVE PAVEMENT MARKING.