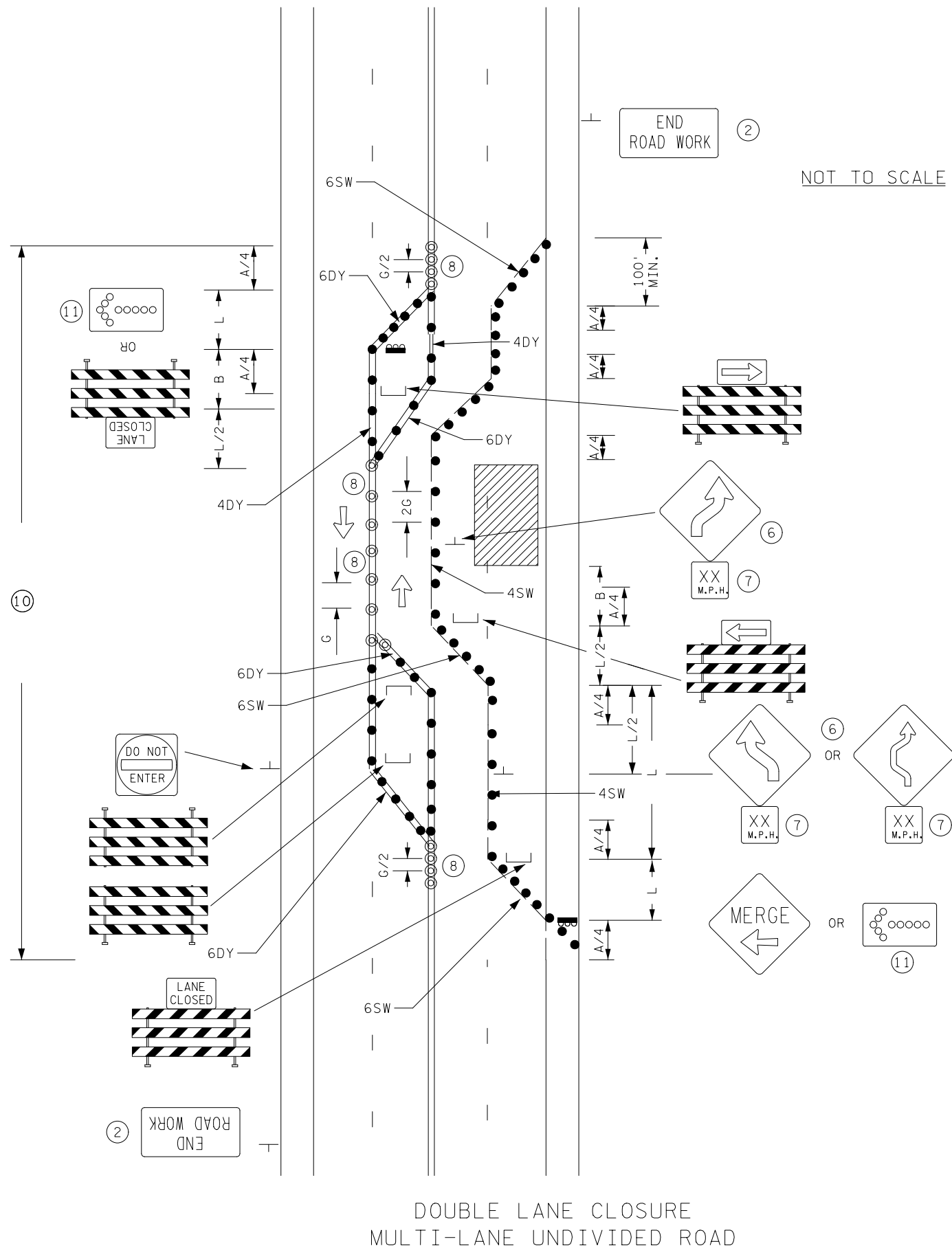


NOT TO SCALE



DOUBLE LANE CLOSURE  
MULTI-LANE UNDIVIDED ROAD

POSTED SPEED LIMIT PRIOR TO WORK STARTING (MPH)	SPACING OF CHANNELIZING DEVICES (G) FEET	SPACING OF ADVANCE WARNING SIGNS (A) FEET	DECISION SIGHT DISTANCE FEET	TAPER LENGTH (L) FEET	SHIFTING TAPER (L/2) FEET	TYPICAL SHOULDER TAPER (L/3) FEET	BUFFER SPACE (B) FEET
0 - 30	25	100	550	200	100	75	200
35 - 40		325	700	325	175	125	305
45 - 50	50	600	900	600	300	200	425
55		750	1200	700	350	250	500
60 - 65		1000	1400	800	400	275	650
70 - 75		1200	1600	900	450	300	820

ALL DISTANCES BASED ON 12 FT LANE WIDTHS.

DESIGNER NOTES:

TYPICAL APPLICATION FOR REFERENCE ONLY, NOT TO BE INSERTED INTO PLAN.

- INSERT SPACING CHART DISTANCES INTO LAYOUTS.
- DETERMINE IF "END ROAD WORK" SIGNS ARE NEEDED.
- CONSIDER THE INSTALLATION OF A PCMS AND/OR G20-X2 OR SPECIAL SIGN IF CONGESTION IS EXPECTED, IF ADVANCE SIGNING TO DIVERT TRAFFIC IS NEEDED, OR OTHER CONDITIONS DETERMINED BY THE ENGINEER.
- CONSIDER THE INSTALLATION OF A PCMS AND/OR G20-X1 SIGN (MODIFIED) OR G20-X2 SIGN FOR SEVEN DAY ADVANCE WARNING OF RESTRICTION.
- FOR ANY EXCAVATION OR DROP-OFF IN EXCESS OF 12 IN., SEE THE MINNESOTA DEPARTMENT OF TRANSPORTATION "TEMPORARY BARRIER GUIDANCE MANUAL".
- IF THE TANGENT LENGTH OF ACTIVITY AREA IS 600 OR LESS, USE THE DOUBLE REVERSE CURVE SIGN. REMOVE THE REVERSE CURVE SIGN(S) IF USING THE DOUBLE REVERSE CURVE SIGN.
- OPTIONAL. WHEN USED, ADVISORY SPEED PLAQUES SHALL BE INSTALLED BELOW THE APPROPRIATE WARNING SIGNS.
- MAY SUBSTITUTE 4" DY LINE WITH TEMPORARY RAISED PAVEMENT MARKERS, DOUBLE SIDED PLACED 4" APART AT 10' SPACING.
- IF BACKUPS ARE EXPECTED CONSIDER USE "LANE CLOSURE WITH ZIPPER MERGE LAYOUT".
- MASK OR REMOVE ALL CONFLICTING PAVEMENT MARKINGS. DETERMINE QUANTITY OF MARKINGS TO BE MASKED OR REMOVED FOR PAY ITEM QUANTITIES.
- THE FLASHING ARROW BOARD SHALL BE USED WHEN THE POSTED SPEED LIMIT IS 45 MPH OR GREATER, AND SHALL BE PLACED FULLY ON THE SHOULDER. IF THERE IS NO SHOULDER, OR THE SHOULDER IS TOO NARROW, PLACE THE FLASHING ARROW BOARD AT THE END OF THE TAPER IN LIEU OF THE TYPE III BARRICADE ASSEMBLY.
- ALL TEMPORARY PAVEMENT MARKINGS SHALL BE WET REFLECTIVE MATERIAL.
- COVER OR REMOVE ALL CONFLICTING INPLACE SIGNING.

- DRUMS
- ⊙ SURFACE MOUNTED DELINEATOR
- — — TEMPORARY WET REFLECTIVE PAVEMENT MARKING.
- 4DY = 4 INCH DOUBLE SOLID LINE YELLOW WET REFLECTIVE
- 4SW = 4 INCH SOLID LINE WHITE WET REFLECTIVE
- 6SW = 6 INCH SOLID LINE WHITE WET REFLECTIVE
- 6DY = 6 INCH DOUBLE SOLID LINE YELLOW WET REFLECTIVE
- 6DW = 6 INCH DOUBLE SOLID LINE WHITE WET REFLECTIVE