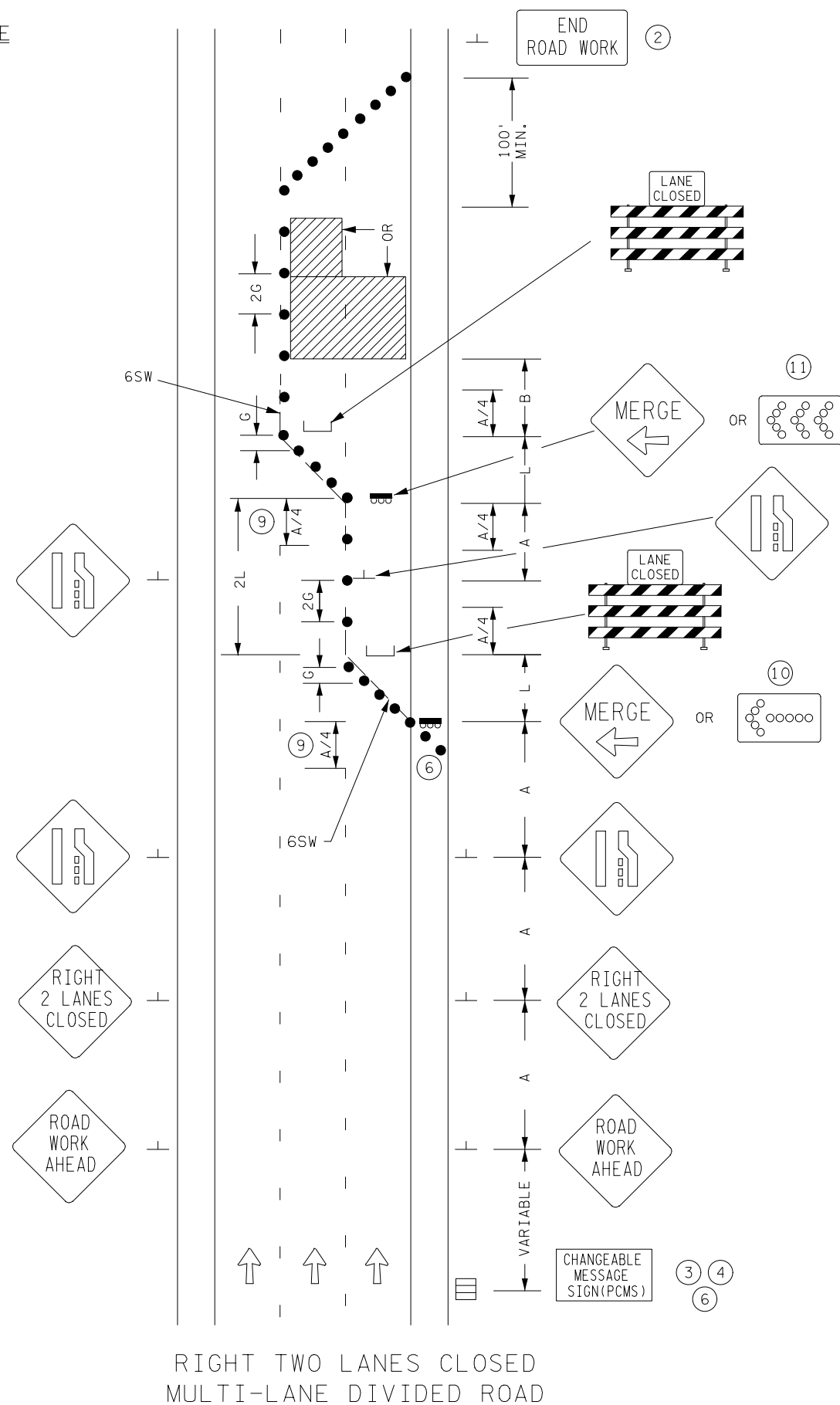


NOT TO SCALE



POSTED SPEED LIMIT PRIOR TO WORK STARTING (MPH)	SPACING OF CHANNELIZING DEVICES (G) FEET	SPACING OF ADVANCE WARNING SIGNS (A) FEET	DECISION SIGHT DISTANCE FEET	TAPER LENGTH (L) FEET	SHIFTING TAPER (L/2) FEET	TYPICAL SHOULDER TAPER (L/3) FEET	BUFFER SPACE (B) FEET
0 - 30	25	100	550	200	100	75	200
35 - 40		325	700	325	175	125	305
45 - 50	50	600	900	600	300	200	425
55		750	1200	700	350	250	500
60 - 65		1000	1400	800	400	275	650
70 - 75		1200	1600	900	450	300	820

ALL DISTANCES BASED ON 12 FT LANE WIDTHS.

DESIGNER NOTES:

TYPICAL APPLICATION FOR REFERENCE ONLY, NOT TO BE INSERTED INTO PLAN.

1. INSERT SPACING CHART DISTANCES INTO LAYOUTS.
2. DETERMINE IF "END ROAD WORK" SIGNS ARE NEEDED.
3. CONSIDER THE INSTALLATION OF A PCMS AND/OR G20-X2 OR SPECIAL SIGN IF CONGESTION IS EXPECTED, IF ADVANCE SIGNING TO DIVERT TRAFFIC IS NEEDED, OR OTHER CONDITIONS DETERMINED BY THE ENGINEER.
4. CONSIDER THE INSTALLATION OF A PCMS AND/OR G20-X1 SIGN (MODIFIED) OR G20-X2 SIGN FOR SEVEN DAY ADVANCE WARNING OF RESTRICTION.
5. FOR ANY EXCAVATION OR DROP-OFF IN EXCESS OF 12 IN., SEE THE MINNESOTA DEPARTMENT OF TRANSPORTATION "TEMPORARY BARRIER GUIDANCE MANUAL".
6. SEE FIELD MANUAL LAYOUT #7 FOR PROPER SHOULDER DELINEATION FOR TRAILER MOUNTED TRAFFIC CONTROL DEVICES.
7. IF 48"x48" ADVANCE WARNING SIGNS WILL NOT FIT ON THE LEFT SIDE BECAUSE OF A NARROW MEDIAN (LESS THAN 6 FT.)
A. REDUCE THE LEFT SIDE SIGN SIZES TO 36"x36" OR
B. ELIMINATE THE LEFT SIDE SIGNING, USE AN ADDITIONAL "RIGHT LANE CLOSED" SIGN ON THE RIGHT, AND DISPLAY THE FLASHING ARROWBOARD ON THE SHOULDER.
8. IF BACKUPS ARE EXPECTED CONSIDER USE OF "LANE CLOSURE WITH ZIPPER MERGE" LAYOUT.
9. MASK OR REMOVE ALL CONFLICTING PAVEMENT MARKINGS. DETERMINE QUANTITY OF MARKINGS TO BE MASKED OR REMOVED FOR PAY ITEM QUANTITIES.
10. THE FLASHING ARROW BOARD SHALL BE USED WHEN THE POSTED SPEED LIMIT IS 45 MPH OR GREATER, AND SHALL BE PLACED FULLY ON THE SHOULDER. IF THERE IS NO SHOULDER, OR THE SHOULDER IS TOO NARROW, PLACE THE FLASHING ARROW BOARD AT THE END OF THE TAPER IN LIEU OF THE TYPE III BARRICADE ASSEMBLY.
11. ALL TEMPORARY PAVEMENT MARKINGS SHALL BE A WET REFLECTIVE MATERIAL.
12. LIST ALL CONFLICTING INPLACE SIGNING THAT MUST BE MODIFIED, COVERED, AND/OR REMOVED. INCLUDE SIGN MODIFICATIONS, COVERS AND/OR REMOVALS IN THE TRAFFIC CONTROL PLAN.

6SW = 6 INCH SOLID LINE WHITE WET REFLECTIVE

● DRUMS

— — — TEMPORARY WET REFLECTIVE PAVEMENT MARKING.