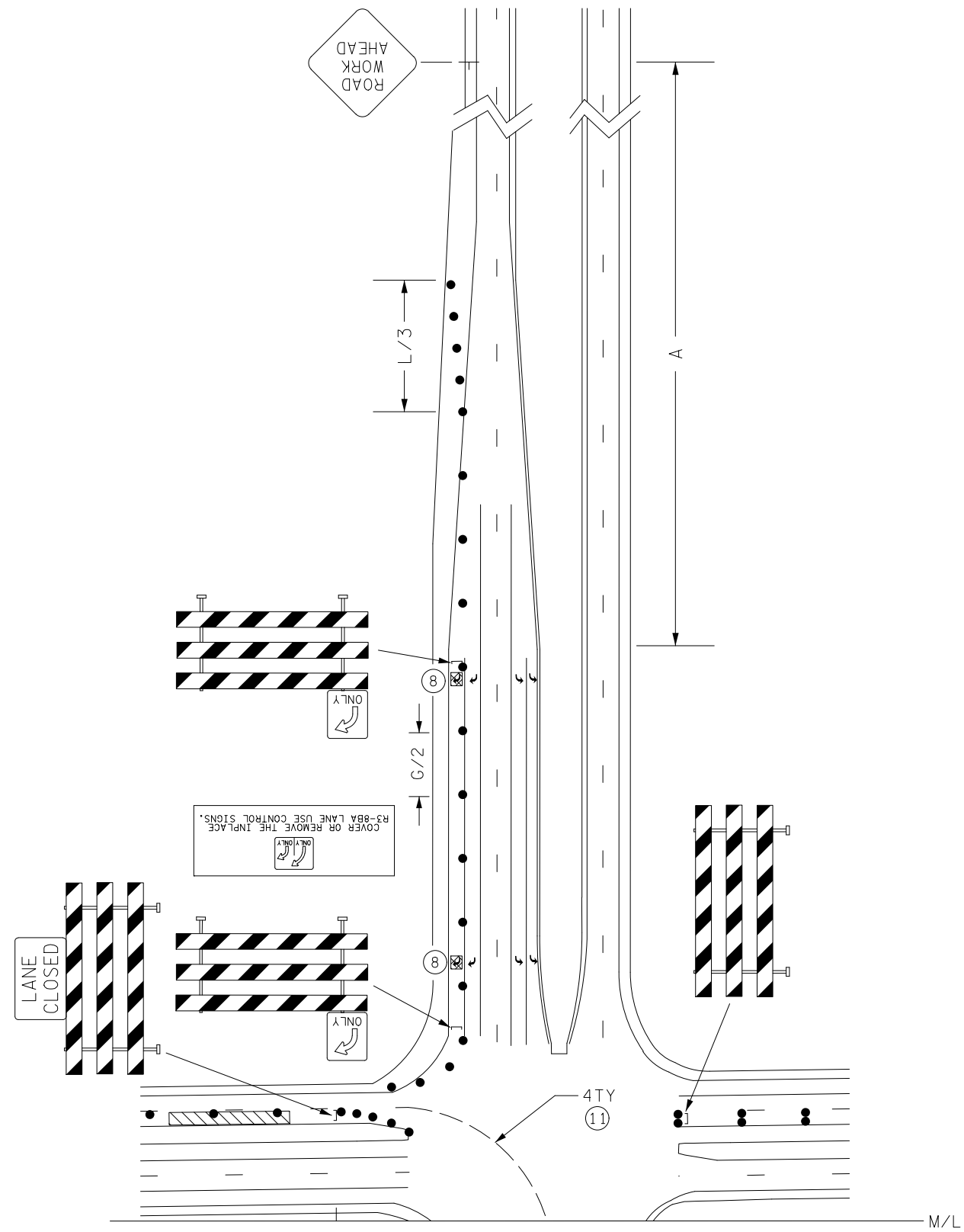


NOT TO SCALE



POSTED SPEED LIMIT PRIOR TO WORK STARTING (MPH)	SPACING OF CHANNELIZING DEVICES (G) FEET	SPACING OF ADVANCE WARNING SIGNS (A) FEET	DECISION SIGHT DISTANCE FEET	TAPER LENGTH (L) FEET	SHIFTING TAPER (L/2) FEET	TYPICAL SHOULDER TAPER (L/3) FEET	BUFFER SPACE (B) FEET
0 - 30	25	100	550	200	100	75	200
35 - 40		325	700	325	175	125	305
45 - 50	50	600	900	600	300	200	425
55		750	1200	700	350	250	500
60 - 65		1000	1400	800	400	275	650
70 - 75		1200	1600	900	450	300	820

ALL DISTANCES BASED ON 12 FT LANE WIDTHS.

DESIGNER NOTES:

TYPICAL APPLICATION FOR REFERENCE ONLY, NOT TO BE INSERTED INTO PLAN.

1. INSERT SPACING CHART DISTANCES INTO LAYOUTS.
2. FOR TRAFFIC CONTROL ON RECEIVING/INTERSECTING ROADWAY SEE PROPER LAYOUT.
3. CONSIDER THE INSTALLATION OF A PCMS AND/OR G20-X2 OR SPECIAL SIGN IF CONGESTION IS EXPECTED, IF ADVANCE SIGNING TO DIVERT TRAFFIC IS NEEDED, OR OTHER CONDITIONS DETERMINED BY THE ENGINEER.
4. CONSIDER THE INSTALLATION OF A PCMS AND/OR G20-X1 SIGN (MODIFIED) OR G20-X2 SIGN FOR SEVEN DAY ADVANCE WARNING OF RESTRICTION.
5. CONTACT THE APPROPRIATE ROAD AUTHORITY FOR SIGNAL TIMING MODIFICATION AND POSSIBLE TURN RESTRICTIONS BEFORE BEGINNING WORK AT OR NEAR ANY SIGNALIZED INTERSECTION.
6. IT IS PREFERABLE TO CLOSE THE LEFT-MOST DUAL LEFT TURN LANE AND THE RIGHT-MOST DUAL RIGHT TURN LANE REGARDLESS OF WHICH LANE IS CLOSED ON THE RECEIVING ROADWAY. VERIFY THAT TURNING MOVEMENTS CAN BE COMPLETED.
7. FOR TRAFFIC CONTROL ON RECEIVING/INTERSECTING ROADWAY SEE PROPER LAYOUT.
8. MASK OR REMOVE ALL CONFLICTING PAVEMENT MARKINGS. DETERMINE QUANTITY OF MARKINGS TO BE MASKED OR REMOVED FOR PAY ITEM QUANTITIES.
9. ALL TEMPORARY PAVEMENT MARKINGS SHALL BE A WET REFLECTIVE MATERIAL.
10. LIST ALL CONFLICTING INPLACE SIGNING THAT MUST BE MODIFIED, COVERED, AND/OR REMOVED. INCLUDE SIGN MODIFICATIONS, COVERS AND/OR REMOVALS IN THE TRAFFIC CONTROL PLAN.
11. CAT TRACK PAVEMENT MARKINGS MAY BE NEEDED TO ASSIST WITH TURNING MOVEMENTS. 4' DOTTED YELLOW, 2' LINE, 6' GAP.
12. WHEN IMPACTING PEDESTRIAN FACILITIES, ALTERNATE PEDESTRIAN ACCESS ROUTES MUST BE PROVIDED. SEE LAYOUT 6J-24 AND 6J-25 FOR GUIDANCE.

4SW = 4 INCH SOLID LINE WHITE WET REFLECTIVE
4TY = 4 INCH DOTTED LINE YELLOW WET REFLECTIVE

● DRUMS, TYPE I OR TYPE II BARRICADE OR VERTICAL PANEL.

— — — TEMPORARY WET REFLECTIVE PAVEMENT MARKING.