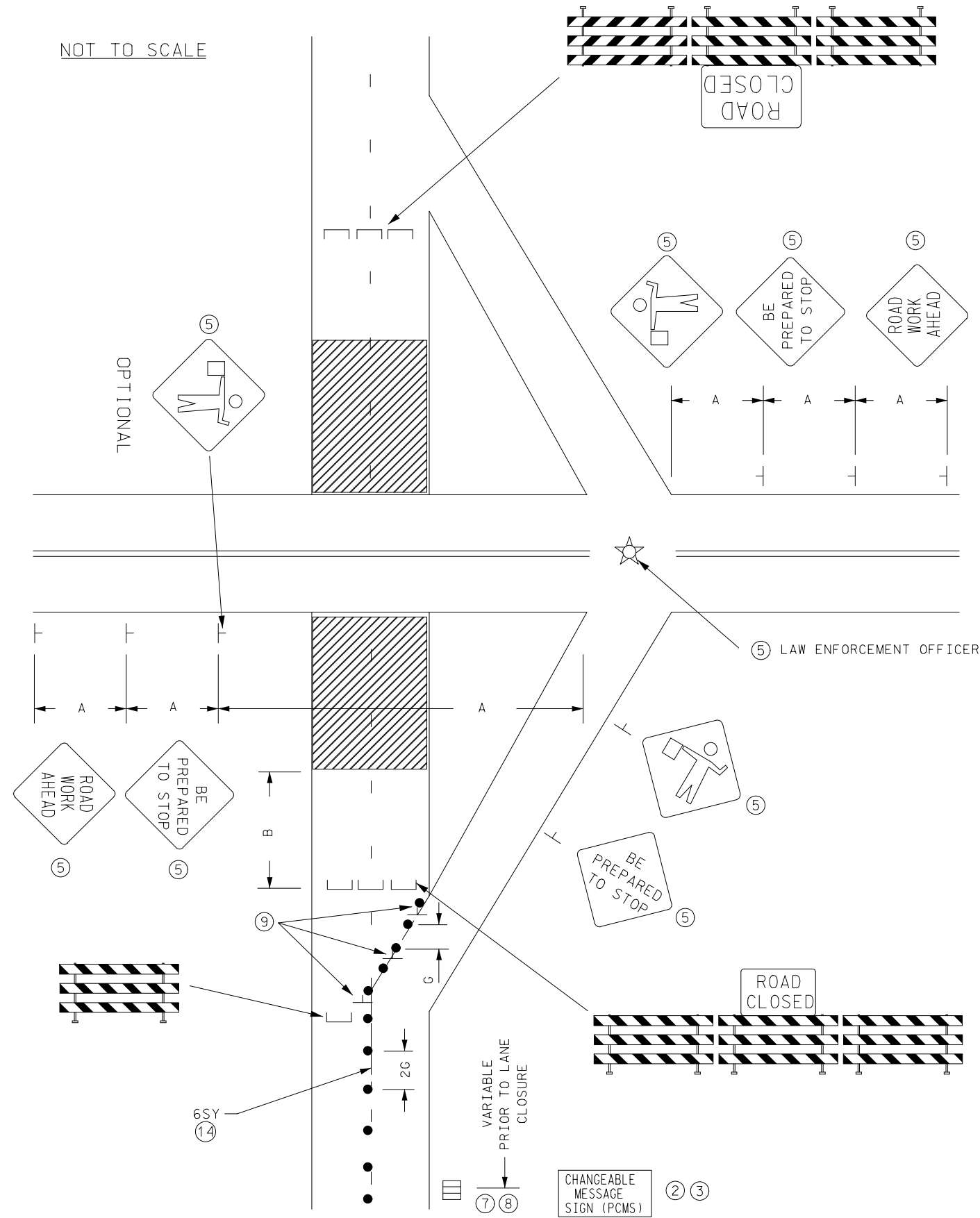


NOT TO SCALE



ROAD CLOSURE AT INTERCHANGE

POSTED SPEED LIMIT PRIOR TO WORK STARTING (MPH)	SPACING OF CHANNELIZING DEVICES (G) FEET	SPACING OF ADVANCE WARNING SIGNS (A) FEET	DECISION SIGHT DISTANCE FEET	TAPER LENGTH (L) FEET	SHIFTING TAPER (L/2) FEET	TYPICAL SHOULDER TAPER (L/3) FEET	BUFFER SPACE (B) FEET
0 - 30	25	100	550	200	100	75	200
35 - 40		325	700	325	175	125	305
45 - 50	50	600	900	600	300	200	425
55		750	1200	700	350	250	500
60 - 65		1000	1400	800	400	275	650
70 - 75		1200	1600	900	450	300	820

ALL DISTANCES BASED ON 12 FT LANE WIDTHS.

DESIGNER NOTES:

TYPICAL APPLICATION FOR REFERENCE ONLY, NOT TO BE INSERTED INTO PLAN.

1. INSERT SPACING CHART DISTANCES INTO LAYOUTS.
2. CONSIDER THE INSTALLATION OF A PCMS AND/OR G20-X2 OR SPECIAL SIGN, IF CONGESTION IS EXPECTED, IF ADVANCE SIGNING TO DIVERT TRAFFIC IS NEEDED OR OTHER CONDITIONS DETERMINED BY THE DESIGNER.
3. CONSIDER THE INSTALLATION OF A PCMS AND/OR G20-X1 SIGN (MODIFIED) OR G20-X2 SIGN FOR SEVEN DAY ADVANCE WARNING OF RESTRICTION.
4. CONSIDER THE TRAFFIC VOLUME OF THE CLOSED ROAD BEING DIVERTED ON TO THE RAMP FOR POSSIBLE MODIFICATIONS TO INPLACE TRAFFIC CONTROL AT RAMP TERMINI AND ON CROSS STREET.
5. LAW ENFORCEMENT OFFICER IS TO DIRECT TRAFFIC AS NEEDED, INCLUDE PAY ITEM. PROVIDE SIGNS IF LAW ENFORCEMENT OFFICER IS NEEDED TO DIRECT TRAFFIC.
6. CONTACT APPROPRIATE ROAD AUTHORITY FOR SIGNAL TIMING MODIFICATION IF INTERSECTION IS SIGNALIZED.
7. FOR ADVANCE SIGNING, PLACEMENT OF TRAFFIC CONTROL DEVICES, PAVEMENT MARKINGS AND REMOVALS, AND LANE CLOSURE, SEE THE APPROPRIATE STATIONARY LAYOUT.
8. SUBSTITUTE "ROAD CLOSED AHEAD" SIGN INPLACE OF THE "ROAD WORK AHEAD" IN THE ADVANCE WARNING SIGN SETUP.
9. SUPPLEMENTAL DELINEATION (SUCH AS CHEVRONS, DOWN ARROWS, ETC.) MAY BE REQUIRED FOR THE RAMP.
10. ALL TEMPORARY PAVEMENT MARKINGS SHALL BE WET REFLECTIVE MATERIAL.
11. LIST ALL CONFLICTING INPLACE SIGNING THAT MUST BE MODIFIED, COVERED AND/OR REMOVED INCLUDE SIGN MODIFICATIONS, COVERS, AND/OR REMOVALS IN THE TRAFFIC CONTROL PLAN.
12. IF BACKUPS ARE EXPECTED CONSIDER USE OF LAYOUT #XX "LANE CLOSURE WITH ZIPPER MERGE".
13. MASK OR REMOVE ALL CONFLICTING PAVEMENT MARKINGS. DETERMINE QUANTITY OF MARKINGS TO BE MASKED OR REMOVED FOR PAY ITEM QUANTITIES.
14. INSTALL TEMPORARY PAVEMENT MARKING IF CLOSURE IS FOR MORE THEN 3 DAYS.

6SY - 6 INCH SOLID LINE YELLOW WET REFLECTIVE

● DRUMS