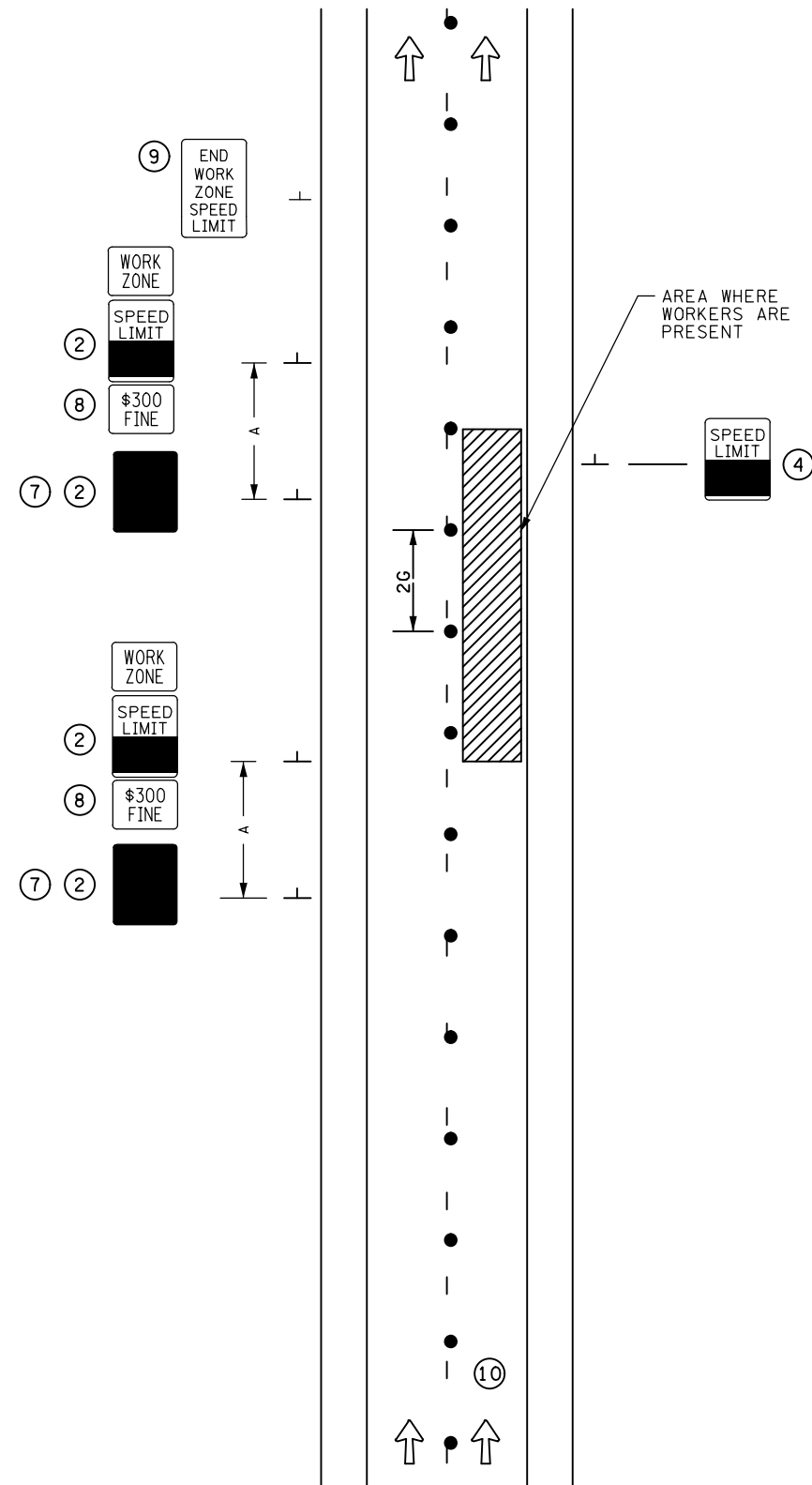


NOT TO SCALE



ELECTRONIC WORKERS PRESENT
SPEED LIMIT

POSTED SPEED LIMIT PRIOR TO WORK STARTING (MPH)	SPACING OF CHANNELIZING DEVICES (G) FEET	SPACING OF ADVANCE WARNING SIGNS (A) FEET	DECISION SIGHT DISTANCE FEET	TAPER LENGTH (L) FEET	BUFFER SPACE (B) FEET
0 - 30	25	100	550	200	200
35 - 40		325	700	325	305
45 - 50		600	900	600	425
55	50	750	1200	700	500
60 - 65		1000	1400	800	650
70 - 75		1200	1600	900	820

ALL DISTANCES BASED ON 12 FT LANE WIDTHS.

DESIGNER NOTES:

TYPICAL APPLICATION FOR REFERENCE ONLY, NOT TO BE INSERTED INTO PLAN.

1. INSERT SPACING CHART DISTANCES INTO LAYOUTS.
2. ELECTRONIC SIGN.
3. IN LONG WORK ZONES, SIGN ASSEMBLY SHOULD BE REPEATED AT 1 MILE INTERVALS FOR HIGH SPEED ROADWAYS, 1/2 FOR LOW SPEED ROADWAYS.
4. ALL INPLACE SPEED LIMIT SIGNS SHALL BE COVERED OR REMOVED WHEN THE WORKERS PRESENT SPEED LIMIT IS IMPLEMENTED.
5. ELECTRONIC WORKERS PRESENT SPEED LIMIT ASSEMBLIES SHALL BE PLACED THROUGH THE LENGTH OF THE ACTIVITY AREA NO GREATER THAN 1 MILE APART WHEN THE POSTED SPEED LIMIT IS 45 MPH OR GREATER, AND NO MORE THAN 1/2 MILE FOR WORKERS PRESENT SPEED LIMIT 40 MPH OR LESS.
6. EACH ELECTRONIC WORKERS PRESENT SPEED LIMIT ASSEMBLY SHALL DISPLAY THE WPSL WHEN WORKERS ARE PRESENT DIRECTLY ADJACENT TO TRAVELED LANES IN THE SEGMENT BEYOND THE ASSEMBLY. WHEN WORKERS ARE NOT PRESENT, THE INPLACE SPEED LIMIT SHALL BE DISPLAYED.
7. AN ELECTRONIC REDUCED SPEED AHEAD SIGN (MAY BE ELECTRONIC OR FLIP BOARD) SHOULD BE USED WHEN THE WORKERS PRESENT SPEED LIMIT IS MORE THAN 10 MPH BELOW THE INPLACE SPEED LIMIT. THAN 10 MPH BELOW THE INPLACE SPEED LIMIT.
8. "\$300 FINE" SIGN IS OPTIONAL.
9. PLACE "END OF WORK SPEED LIMIT" SIGN AT END OF WORKERS PRESENT SPEED ZONE.
10. LAYOUT ONLY SHOWS THE ADDITIONAL SIGNAGE REQUIRED TO SETUP A ELECTRONIC WORKERS PRESENT SPEED LIMIT SYSTEM. REFER TO OTHER TTC LAYOUTS FOR THE PROPER TEMPORARY TRAFFIC CONTROL DEVICES.

Sign	Minimum Sign Sizes	
	Posted Speed Limit Prior to Work Starting	
	≤40 mph	≥45 mph
END WORK ZONE SPEED LIMIT (R2-12)	24" x 36"	36" x 54"
WORK ZONE (G20-5dP)	24" x 18"	36" x 24"
SPEED LIMIT (R2-1)	24" x 30"	36" x 48"
\$300 FINE (R2-6bP)	24" x 18"	36" x 24"
REDUCED SPEED AHEAD (W3-5)	36" x 36"	48" x 48"

● DRUMS.