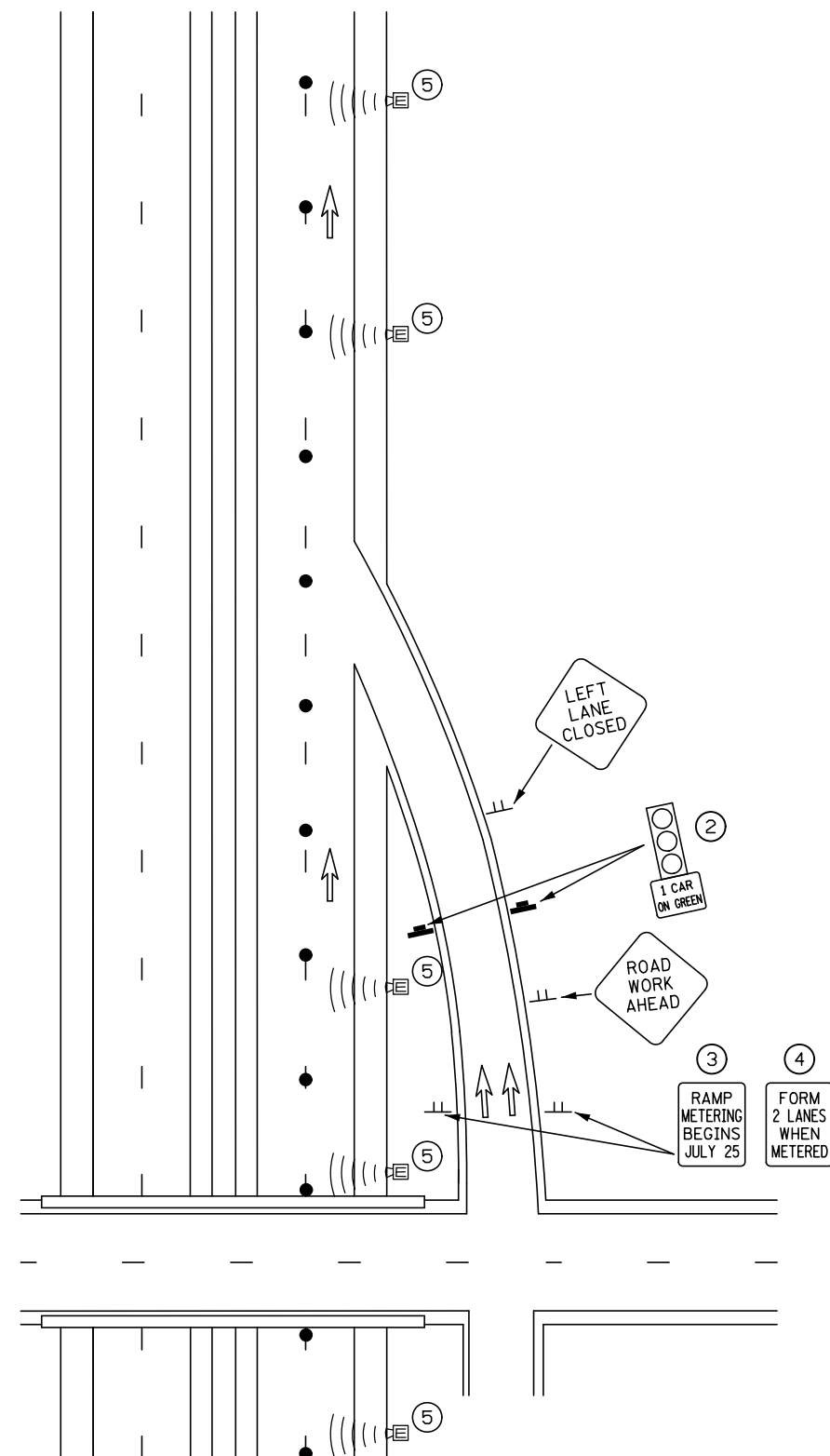


NOT TO SCALE



TEMPORARY RAMP METERING SYSTEM

DESIGNER NOTES:

TYPICAL APPLICATION FOR REFERENCE ONLY, NOT TO BE INSERTED INTO PLAN.

1. CONSIDERATION SHOULD BE GIVEN TO POSTING AN ALTERNATE ROUTE AND TRAVEL TIME FOR ADDITIONAL DRIVER INFORMATION.
- ② TEMPORARY PEDESTAL MOUNTED TRAFFIC SIGNALS. GREEN ALTERNATES BETWEEN THE TWO SIGNAL HEADS, REQUIRING THE TWO LANES TO TAKE TURNS.
- ③ ADVANCE NOTIFICATION OF CHANGE IN TRAFFIC CONTROL SIGN (R10-X4) SHOULD BE INSTALLED A MINIMUM OF 7 SEVEN DAYS PRIOR TO CHANGE.
- ④ REPLACE THE ADVANCE NOTIFICATION SIGN WITH THE "FORM 2 LANES WHEN METERED" (R10-X7) WHEN RAMP METERING BEGINS..
- ⑤ NON -INTRUSIVE DETECTION DEVICES SPACED ALONG THE ROUTE AS NEEDED FOR PROPER SYSTEM OPERATION. DETECTION MEASURES SPEED/CAPACITY OF TRAFFIC AND DETERMINES THE CYCLE LENGTH FOR THE RAMP METERS.
6. PROVIDE FULL ACCELERATION LANE WHENEVER POSSIBLE AND THEN DO NOT DISPLAY YIELD AND YIELD AHEAD SIGNS.
7. ADJUST THE RAMP ENTRANCE TO FIT THE CONDITIONS AS DIRECTED BY THE ENGINEER.
8. ADVANCE WARNING SIGNS AND OTHER STANDARD TEMPORARY TRAFFIC CONTROL DEVICES SHOWN ON HAVE NOT THIS LAYOUT ARE FOR REFERENCE ONLY. SEE THE TRAFFIC CONTROL PLAN REQUIRED TRAFFIC CONTROL.

● DRUMS