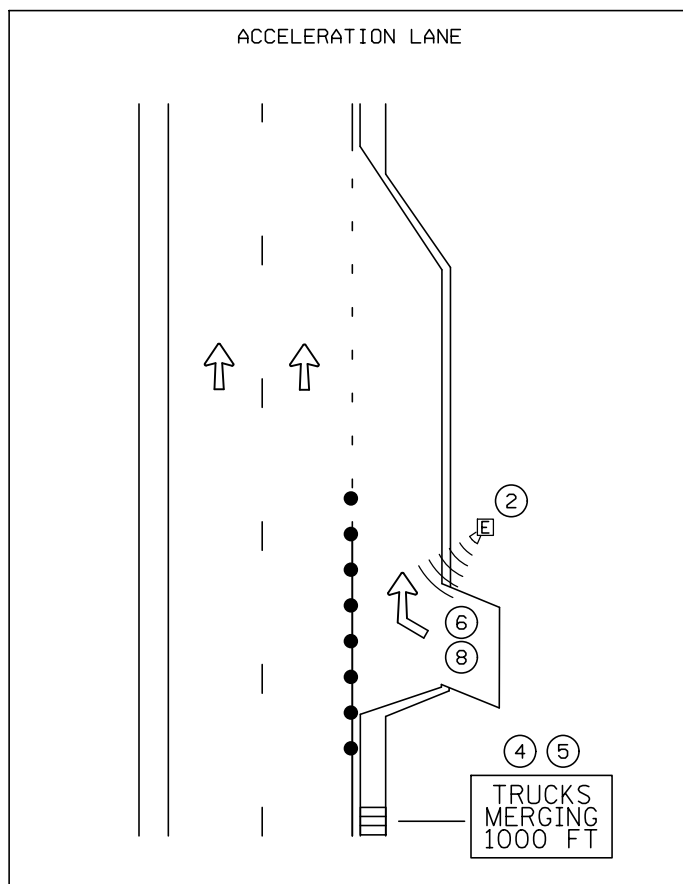
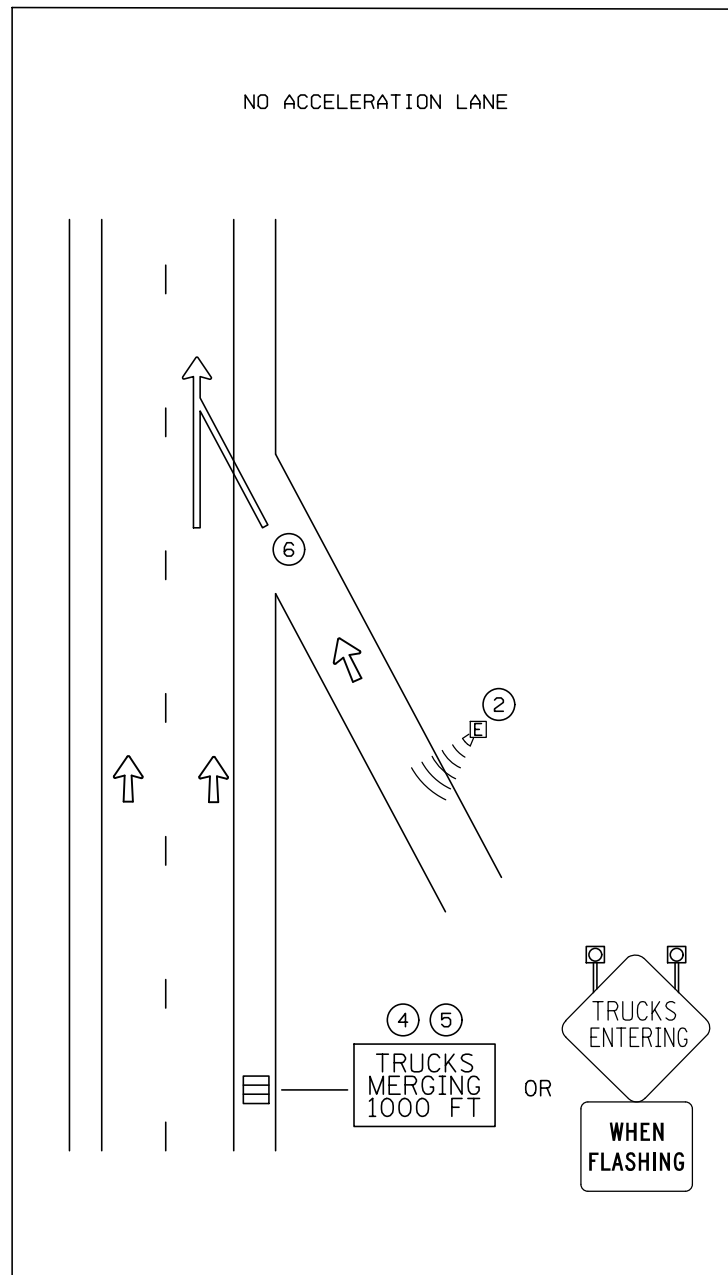
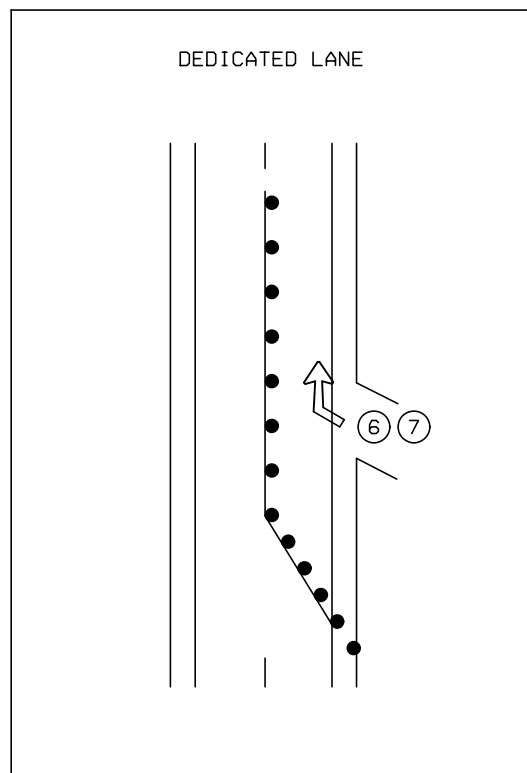


NOT TO SCALE



CONSTRUCTION VEHICLES MERGING SYSTEM
MULTI-LANE DIVIDED

DESIGNER NOTES:

TYPICAL APPLICATION FOR REFERENCE ONLY, NOT TO BE INSERTED INTO PLAN.

1. ANALYSIS SHOULD BE DONE AHEAD OF TIME FOR SIGNAGE PLACEMENT AND PROPER PCMS FUNCTIONING.
- ② NON -INTRUSIVE DETECTION SHOULD BE PLACED ALONG THE ROADWAY AS NEEDED FOR PROPER SYSTEM OPERATIONS. THE DETECTION MAY INCLUDE ELECTRONIC DEVICES CONTROL ED BY THE TRUCK DRIVERS.
- 3 APPROVED CMS MESSAGES SHOULD BE SHOWN ON THE TTC PLANS AND LISTED IN THE SPECIAL PROVISIONS. APPROXIMATE CMS LOCATIONS SHOULD ALSO BE SHOWN ON THE TTC PLANS. ALL CMS DISPLAYS SHOULD BE BLANK OR USED FOR ANOTHER ITS SYSTEM WHEN CONSTRUCTION VEHICLES MERGING NOTIFICATION MESSAGES ARE NOT WARRANTED.
- ④ WHEN PCMS DEVICES ARE USED, THE MESSAGE SHOULD READ:
-- TRUCKS MERGING 1000 FT --
- ⑤ PMCS IS BLANK UNLESS CONSTRUCTION VEHICLES ARE MERGING INTO THE TRAFFIC LANES.
- ⑥ CONSTRUCTION VEHICLES MERGING.
- ⑦ TYPICALLY, IWZ SYSTEMS ARE NOT NEEDED FOR CONSTRUCTION TRAFFIC IN THIS SCENARIO.
- ⑧ ALTHOUGH THIS SCENARIO MAY OPERATE EFFICIENTLY WITHOUT AN IWZ SYSTEM INSTALLED, HIGHER TRAFFIC OR TRUCK VOLUMES, OR A SHORT ACCELERATION LANE WOULD WARRANT THE USE OF AN IWZ SYSTEM.
9. LAYOUT ONLY SHOWS THE SIGNAGE REQUIRED TO SETUP A ACTIVE ZIPPER MERGE SYSTEM. REFER TO OTHER TTC LAYOUTS FOR THE PROPER TEMPORARY TRAFFIC CONTROL DEVICES AND SPACING.

● DRUMS