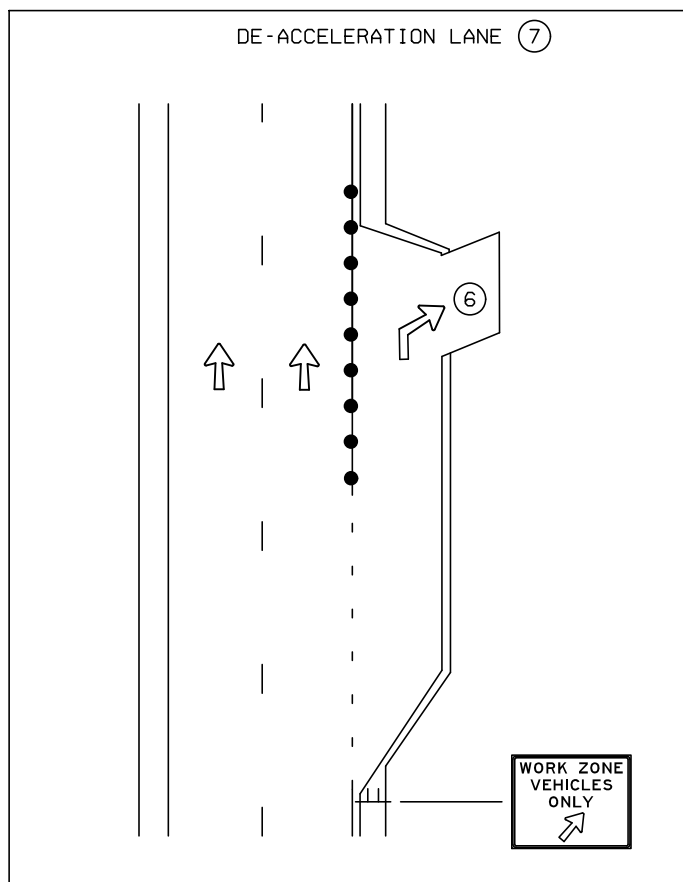
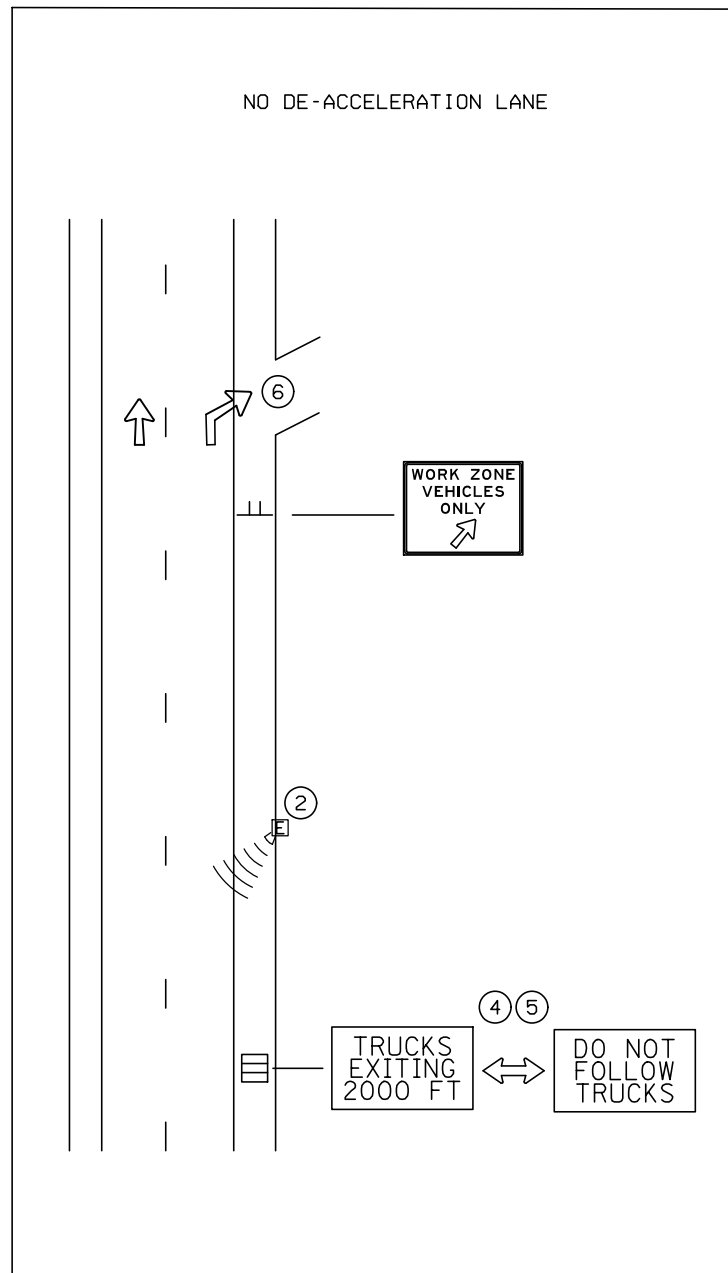
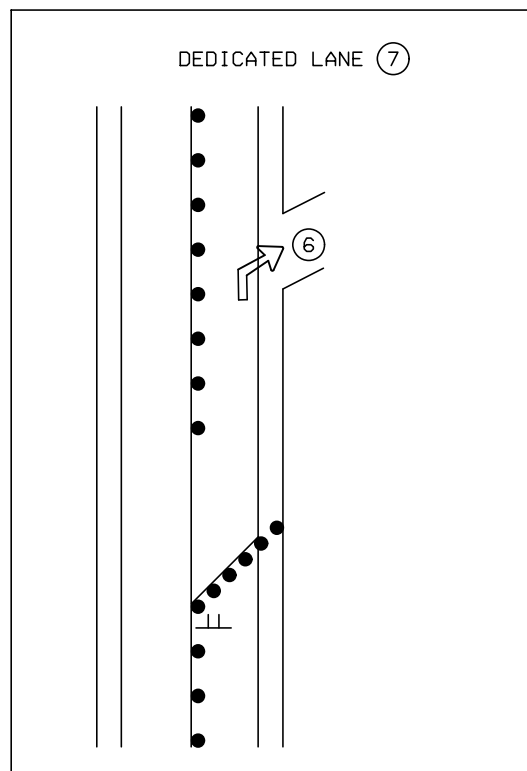


NOT TO SCALE



CONSTRUCTION VEHICLES EXITING SYSTEM

DESIGNER NOTES:

TYPICAL APPLICATION FOR REFERENCE ONLY, NOT TO BE INSERTED INTO PLAN.

1. ANALYSIS SHOULD BE DONE AHEAD OF TIME FOR SIGNAGE PLACEMENT AND PROPER PCMS FUNCTIONING.
- (2) NON-INTRUSIVE DETECTION SHOULD BE PLACED ALONG THE ROADWAY AS NEEDED FOR PROPER SYSTEM OPERATIONS. THE DETECTION MAY INCLUDE ELECTRONIC DEVICES CONTROLLED BY THE TRUCK DRIVERS.
3. APPROVED CMS MESSAGES SHOULD BE SHOWN ON THE TTC PLANS AND LISTED IN THE SPECIAL PROVISIONS. APPROXIMATE CMS LOCATIONS SHOULD ALSO BE SHOWN ON THE TTC PLANS. ALL CMS DISPLAYS SHOULD BE BLANK OR USED FOR ANOTHER ITS SYSTEM WHEN CONSTRUCTION EXITING NOTIFICATION MESSAGES ARE NOT WARRANTED.
- (4) WHEN PCMS DEVICES ARE USED, THE TWO MESSAGES SHOULD READ:
-- TRUCKS EXITING 2000FT -- DO NOT FOLLOW TRUCKS --.
- (5) PCMS IS BLANK UNLESS CONSTRUCTION VEHICLES ARE MERGING INTO THE TRAFFIC LANES.
- (6) CONSTRUCTION VEHICLES EXITING.
- (7) TYPICALLY, IWZ SYSTEMS ARE NOT NEEDED FOR CONSTRUCTION TRAFFIC IN THIS SCENARIO.
8. LAYOUT ONLY SHOWS THE SIGNAGE REQUIRED TO SETUP A CONSTRUCTION VEHICLES EXITING WARNING SYSTEM. REFER TO OTHER TTC LAYOUTS FOR THE PROPER TEMPORARY TRAFFIC CONTROL DEVICES AND SPACING.

● DRUMS